

Roll No:

Registration No:

Name:

Date: **05-Jan-2019 -3rd Shift**

Examination: **Online Examination - SI**

Section 1 - Online Examination

Question No.1

1.00

Bookmark

The interval between the session of a parliament session and the beginning of the next session is called the interval-

- (A) Suspension - (Alternative 1)
- (B) House dissolution - (Alternative 4)
- (C) Indefinitely postponement - (Alternative 2)
- (D) **Relaxation - (Optional 3)**

Question No.2

1.00

Bookmark

Where did the Olympics first place outside the United States and Europe?

- (A) Tokyo - (Alternative 1)
- (B) **Melbourne - (Alternative 3)**
- (C) Canberra - (Alternative 2)
- (D) Rio - (Alternative 4)

Question No.3

1.00

Bookmark

How many years have India's census done?

- (A) 20 years - (Optional 4)
- (B) **10 Years - (Alternative 2)**
- (C) 5 years - (Optional 1)
- (D) 15 years - (Optional 3)

Question No.4

1.00

Bookmark

Which is the second largest organ donation?

- (A) **Mollusca - (Alternative 4)**
- (B) Arthropoda - (Alternative 1)
- (C) Escalaments - (Alternative 3)
- (D) Annelida - (Alternative 2)

Question No.5

1.00

Bookmark

Which year was the post of Lok Sabha Speaker (Speaker) and Deputy Speaker (Deputy Speaker)?

- (A) 1935 - (Alternative 1)
- (B) 1951 - (Alternative 3)
- (C) 1947 - (Alternative 2)
- (D) **1921 - (Alternative 4)**

Question No.6

1.00

Bookmark

Where is the World Football Championship organized by FIFA for the first time?

- (A) Texas - (Alternative 4)
- (B) Gold Coast - (Alternative 2)
- (C) **Montevideo - (Alternative 1)**
- (D) Lisbon - (Alternative 3)

Question No.7

1.00

Bookmark

The reaction of nitril and Easter is done by the reaction of aldehyde production?

- (A) Ikylon Reaction - (Alternative 4)
- (B) Eatard Reaction - (Alternative 3)
- (C) Rosenmund opt out - (Alternative 2)
- (D) **Stephen Reaction - (Alternative 1)**

Question No.8

1.00

Bookmark

The proposal for General Anti Avoidance Rules (GAAR) was passed for the first time-

- (A) **Direct Tax Code 2010 - (Alternative 2)**
- (B) In GST Amendment - (Optional 1)
- (C) FFSLRC - (Optional 4)
- (D) FSDC Recommendation - (Optional 3)

Question No.9

1.00

Bookmark

In the Rajya Sabha, the allocation of seats in States and Union Territories comes under which schedule?

- (A) Third - (Optional 1)
- (B) **Fourth - (Optional 3)**
- (C) Second - (Optional 2)
- (D) Seventh - (Optional 4)

Question No.10

1.00

Bookmark

Under which article can the Supreme Court issue a writ?

- (A) Article 131 - (Alternative 2)
- (B) **Article 32 - (Optional 3)**
- (C) Article 143 - (Optional 1)
- (D) Article 226 - (Alternative 4)

Question No.11

1.00

Bookmark

Which minerals are found in abundance in Monazite soil?

- (A) Uranium - (Alternative 1)
- (B) Plutonium - (Alternative 2)
- (C) **Thorium - (Alternative 3)**
- (D) Iridium - (Alternative 4)

Question No.12

1.00

Bookmark

What does 'Dan' mean in the game of judo?

- (A) **Owner - (Optional 2)**
- (B) Loser - (Alternative 3)
- (C) Ref - (Alternative 1)
- (D) Students - (Alternative 4)

Question No.13

1.00

Bookmark

Victoria Lake is in which of these continent?

- (A) Asia - (Alternative 1)
- (B) **Africa - (Alternative 3)**
- (C) Australia - (Alternative 2)
- (D) Antarctica - (Alternative 4)

Question No.14

1.00

Bookmark

The word 'Dead Ball' is related to which of the following games?

- (A) Sword Bazy - (Alternative 2)
- (B) Weightlifting - (Alternative 1)
- (C) Snorkel - (Alternative 3)
- (D) **Cricket - (Alternative 4)**

Question No.15

1.00

Bookmark

Point defect in crystal lattice is a type of frankel defect. By what name is it known?

- (A) Scotty Defect - (Alternative 4)
- (B) Interstitial Defects - (Optional 1)
- (C) Hematological defects - (Alternative 2)
- (D) **Displacement defects - (Optional 3)**

Question No.16

1.00

Bookmark

In what form are the areas which come in the downstream of the Visarpi river (the river that constantly changes its path)?

- (A) Peniplen - (Alternative 4)
- (B) **Oxbow Lake - (Alternative 3)**
- (C) Auxiliary River - (Alternative 1)
- (D) River Branch - (Alternative 2)

Question no.17

1.00

Bookmark

The longest river in Europe is-

- (A) Ural - (Alternative 2)
- (B) **Volga - (Alternative 4)**
- (C) Danube - (Alternative 3)
- (D) Nipper - (Alternative 1)

Question No.18

1.00

Bookmark

What are the South Indian languages related to which language group?

- (A) **Dravid - (Alternative 3)**
- (B) Tibet-Burman - (Alternative 2)
- (C) Austrique - (Optional 4)
- (D) Anglo-Indians - (Alternative 1)

Question No.19

1.00

Bookmark

By what name is the Bhoodan-Gramadan movement started by Vinoba Bhave?

- (A) Civil Revolution - (Alternative 4)
- (B) Green Revolution - (Alternative 1)
- (C) White Revolution - (Alternative 2)
- (D) **Bloodless Revolution - (Alternative 3)**

Question No.20

1.00

Bookmark

What are the wide open areas of South Africa called?

- (A) Downs - (Alternative 1)
- (B) **Welds - (Alternative 2)**
- (C) Pair - (optional 3)
- (D) Compass - (Optional 4)

Question no.21

1.00

Bookmark

What is the change achieved when the change in velocity divided by intermittent?

- (A) Average Displacement - (Alternative 4)
- (B) **Average Acceleration - (Alternative 2)**
- (C) Average Speed - (Optional 3)
- (D) Average velocity - (Optional 1)

Question no.22

1.00

Bookmark

What is called Shaivism in the Bhakti movement?

- (A) **Nayanar - (Alternative 4)**
- (B) Wali - (Alternative 1)
- (C) Bodhisattva - (Alternative 2)
- (D) Alwar - (Alternative 3)

Question no.23

1.00

Bookmark

Who composed the famous book 'book-ul-Hind'?

- (A) **Al-Baruni - (Alternative 1)**
- (B) Rich Khusro - (Alternative 3)
- (C) Abdur Razzak - (Alternative 4)
- (D) Ibn Arabi - (Alternative 2)

Question no.24

1.00

Bookmark

Which of the following is a part of the Iberia Peninsula?

- (A) France - (Alternative 3)
- (B) Italy - (Alternative 1)
- (C) Belgium - (Alternative 4)
- (D) **Spain - (Alternative 2)**

Question No.25

1.00

Bookmark

The Consumer Price Index is issued by whom?

- (A) Office of the Economic Adviser - (Alternative 1)
- (B) Finance Commission - (Alternative 2)
- (C) Policy Committee - (Alternative 4)
- (D) **Central Statistical Office - (Alternative 3)**

Question no.26

1.00

Bookmark

Which of the following is based on Pascal's law?

- (A) Centrifuge - (Alternative 2)
- (B) **Hydraulic Lift - (Optional 3)**
- (C) Motor - (Optional 4)
- (D) Lever - (Optional 1)

Question no.27

1.00

Bookmark

Military law is protected under which paragraph of the Indian Constitution?

- (A) Article 36 - (Alternative 2)
- (B) Article 32 - (Optional 1)
- (C) **Article 34 - (Optional 4)**
- (D) Article 31 - (Optional 3)

Question no.28

1.00

Bookmark

Which of the following games is not a competition to jump?

- (A) Pole Vault - (Alternative 2)
- (B) Hurdles - (Alternative 1)
- (C) **Short Run - (Alternative 3)**
- (D) Swimming - (Alternative 4)

Question no.29

1.00

Bookmark

Which of the following skills do not belong to the table tennis game?

- (A) Spin - (Alternative 4)
- (B) **T - (optional 3)**
- (C) Grip - (Alternative 1)
- (D) Stroke - (Optional 2)

Question No.30

1.00

Bookmark

Who is published by the Wholesale Price Index (WPI)?

- (A) **Office of the Financial Adviser - (Alternative 3)**
- (B) Finance Commission - (Alternative 1)
- (C) Policy Committee - (Alternative 4)
- (D) Central Statistical Office - (Alternative 2)

Question No.31

1.00

Bookmark

What type of democracy is the goal of policy director theory?

- (A) Both social and political democracy - (Alternative 3)
- (B) Political democracy - (Alternative 2)
- (C) Community Freedom - (Alternative 1)
- (D) **Social and Economic Democracy - (Alternative 4)**

Question No.32

1.00

Bookmark

Out of the following two states, the projects related to geothermal energy have been set up?

- (A) Punjab, Jammu and Kashmir - (Alternative 2)
- (B) West Bengal and Sikkim - (Alternative 4)
- (C) Rajasthan and Himachal Pradesh - (Alternative 3)
- (D) **Himachal Pradesh, Jammu and Kashmir - (Alternative 1)**

Question No.33

1.00

Bookmark

Which of the following was introduced by the practice of burning horses?

- (A) Babar - (Alternative 3)
- (B) Balban - (Alternative 4)
- (C) Akbar - (Alternative 1)
- (D) **Allauddin Khilji - (Alternative 2)**

Question No.34

1.00

Bookmark

Modified cathodes are called corona particles in the ray tube-

- (A) **Canal rays - (Alternative 1)**
- (B) Ultraviolet Rays - (Alternative 4)
- (C) Neutron - (Alternative 3)
- (D) X-rays - (Alternative 2)

Question No.35

1.00

Bookmark

The word 'chinsila' is related to whom?

- (A) **Sufi Sampraday (Alternative 3)**
- (B) Sikh Sampraday - (Alternative 2)
- (C) Imperial Decree - (Alternative 4)
- (D) Devotional Sect - (Alternative 1)

Question No.36

1.00

Bookmark

There is a gravitational force on a particle within the spherical shell-

- (A) **Zero - (Optional 2)**
- (B) Negative - (Optional 4)
- (C) One - (Optional 1)
- (D) Infinity - (Alternative 3)

Question No.37

1.00

Bookmark

The arrangement of leaves on stems or branches is called-

- (A) SpinTaxi - (Alternative 4)
- (B) Pulmotela - (Alternative 1)
- (C) Tendroxy - (Alternative 2)
- (D) **Phylax - 3**

Question No.38

1.00

Bookmark

Which act was done by decentralization of Madras and Bombay?

- (A) Act of 1858 for Better Governance - (Optional 1)
- (B) Morley-Minto Correction, 1909 - (Alternative 3)
- (C) Montagu Chelmsford Reforms, 1919 - (Alternative 4)
- (D) **Act 1861 - (Alternative 2)**

Question No.39

1.00

Bookmark

The financial sector development council (FSDC) was set up to replace one of the following?

- (A) High Level Committee on Trade Market - (Alternative 1)
- (B) Integrated Financial Agency - (Alternative 4)
- (C) Financial Correction Agency - (Alternative 3)
- (D) **High Level Committee on Capital Markets - (Alternative 2)**

Question No.40

1.00

Bookmark

What is the 'pro-puar' (in the interest of the poor), according to their vulnerability on taxpayers?

- (A) Proportional Taxation - (Optional 3)
- (B) Adverse Taxation - (Alternative 2)
- (C) **Progressive taxation - (Optional 1)**
- (D) Indirect Taxation - (Alternative 4)

Question No.41

1.00

Bookmark

Which of the following festivals is called the festival of colors?

- (A) **Holi - (Alternative 1)**
- (B) Janmashtami - (Alternative 2)
- (C) Durga Pooja - (Alternative 3)
- (D) Dussehra - (Alternative 4)

Question No.42

1.00

Bookmark

Which year was the National Women's Commission established?

- (A) 1989 - (Alternative 3)
- (B) 1993 - (Alternative 4)
- (C) 1991 - (Alternative 2)
- (D) **1992 - (Alternative 1)**

Question No.43

1.00

Bookmark

Which of the following dance styles is known as 'Saga of East'?

- (A) Mohiniattam - (Alternative 1)
- (B) Kuchipudi - (Alternative 2)
- (C) **Kathakali - (Alternative 3)**
- (D) Kathak - (Alternative 4)

Question no.44

1.00

Bookmark

Which state is associated with traditional Muppets of Gombetta?

- (A) Tamil Nadu - (Alternative 1)
- (B) Andhra Pradesh - (Alternative 3)
- (C) Kerala - (Alternative 4)
- (D) **Karnataka - (Alternative 2)**

Question No.45

1.00

Bookmark

According to the Child Labor Prevention Act (Amendment) 2016, labor is restricted to children of the age group.

- (A) **14 - (Optional 1)**
- (B) 16 - (Optional 2)
- (C) 18 - (Optional 3)
- (D) 7 - (Optional 4)

Question No.46

1.00

Bookmark

Which tissue is found in the human body as the hardest and bony tissue?

- (A) Cartilage - (Alternative 2)
- (B) Collagen - (Alternative 3)
- (C) **Bone - (Alternative 1)**
- (D) Epithelial Tissue - (Alternative 4)

Question no.47

1.00

Bookmark

Who headed the second 'backward caste commission'?

- (A) Demand Barred Paramuna - (Alternative 3)
- (B) Kaka Blackar - (Alternative 2)
- (C) Fazal Ali - (Alternative 4)
- (D) **BP Division - (Optional 1)**

Question no.48

1.00

Bookmark

In which of the following states are the highest number of permanent forests?

- (A) Kerala - (Alternative 2)
- (B) Assam - (Alternative 4)
- (C) Tamil Nadu - (Alternative 3)
- (D) **Madhya Pradesh - (Alternative 1)**

Question No.49

1.00

Bookmark

The Bahamani state was the most powerful under whose rule?

- (A) Alauddin Hassan - (Alternative 2)
- (B) Firoz Shah Bahman - (Alternative 1)
- (C) Ahmed Shah - (Alternative 4)
- (D) **Mahmoud Gavan - (Alternative 3)**

Question No.50

1.00

Bookmark

Which year did Aamir Taimur invade Delhi?

- (A) 1396 - (Alternative 2)
- (B) 1395 - (Optional 1)
- (C) 1397 - (Optional 3)
- (D) **1398 - (Optional 4)**

Question No.51

1.00

Bookmark

Find the next number in the following series:

15, 31, 64, 131, 266, ?

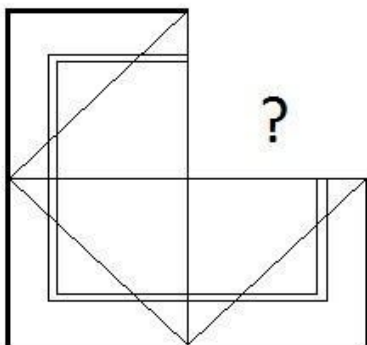
- (A) 545 - (Optional 3)
- (B) 550 - (Alternative 2)
- (C) 560 - (Optional 1)
- (D) **537 - (Optional 4)**

Question No.52

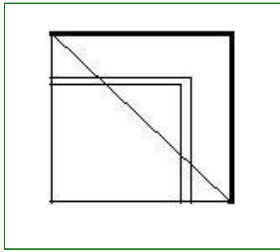
1.00

Bookmark

From the selection of the correct figure that meets the given picture:

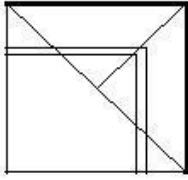


- (A)



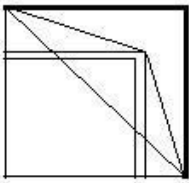
- (Optional 3)

(B)



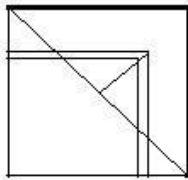
- (Optional 2)

(C)



- (Optional 1)

(D)



- (Optional 4)

Question No.53

1.00

Bookmark

Select the water image of the given shape from the options.

SHAPE

(A)

2HAP2

- (Optional 2)

(B)

2HAP2

- (Optional 4)

(C)

2HAP2

- (Optional 1)

(D)

Question No.54

1.00

Bookmark

Find the next number in the following series:

14, 19, 38, 43, 86,?

- (A) 91 - (Optional 3)
(B) 92 - (Optional 4)
(C) 90 - (Optional 2)
(D) 89 - (Optional 1)

Question no.55

1.00

Bookmark

A question has been given in this question and a statement related to it. Read the passage carefully and review the statement based on it.

Currently, logically, there is tremendous opportunity for this time the most famous Indian Test cricket team. It has won only two of the last eight Tests played out of Asia, the remaining six are lost. It needs to improve its performance, and Australia is the most suitable place for it. Because the conditions at this time are completely different.

A good series of winning a series in Australia can not be any more. Because at that time his two middle-order batsmen Steve Waugh and Ricky Ponting are not in the Australian team, who always perform well for their team and due to which teams are afraid of playing against them on their home pitches.

The current Australian team has lost three of the last five Test series. Australia is in miserable position in the absence of two of their best batsmen, Steve Smith and David Warner. Both of these batsmen are still suspended from three.

Statement: The absence of Steve Smith and David Warner is a blow to the Australian team.

Select the most appropriate option from the following.

A-statement is absolutely true.

B-Query is probably true.

C-statement can not be reviewed.

D-statement is completely false.

- (A) B - (Alternative 2)
(B) D - (Alternative 4)
(C) C - (Alternative 3)
(D) A - (Alternative 1)

Question no.56

1.00

Bookmark

Four of the following given five letters are similar in some way and so they form a group among themselves. Which of these is not related to this group?

U, X, I, O, E

- (A) O - (Alternative 1)
(B) U - (Alternative 3)
(C) I - (Optional 4)
(D) X - (Alternative 2)

Question no.57

1.00

Bookmark

In this question, a statement and related two conclusions have been given in the form of i and ii. You should consider the things given in the statements as true and to determine which conclusions are relevant in relation to the statements?

Statement: It is good to drink coffee twice a day.

Conclusion:

- i). Coffee can be a health drink.
- ii). Coffee is more healthier than tea.

Select the one most suitable in the following options:

- A. The only conclusion i is logical is
- B. The only conclusion ii is logical is
- C. either the conclusions i or ii is rational
- D. Neither conclusion ii nor rational is
- E. i and ii both conclusions are rational.

- (A) **A - (Alternative 1)**
- (B) E - (Alternative 4)
- (C) C - (Alternative 3)
- (D) B - (Alternative 2)

Question no.58

1.00

Bookmark

On the basis of the logic used in the first pair, select from the substitute alternate question mark in the second pair.

Square: Perimeter :: Circle: ??

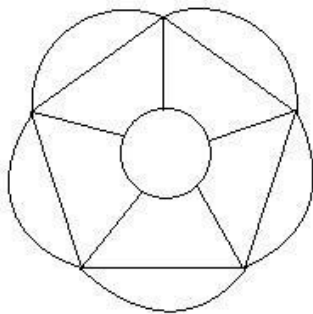
- (A) **Circumference - (Alternative 4)**
- (B) Cylinder - (Optional 3)
- (C) Diagonal - (Alternative 2)
- (D) Volume - (Optional 1)

Question No.59

1.00

Bookmark

What is the number of straight lines in the given picture?



- (A) **10 - (Optional 4)**
- (B) 9 - (Optional 2)
- (C) 8 - (Optional 3)
- (D) 12 - (Optional 1)

Question No.60

1.00

Bookmark

On the basis of the logic used in the first pair, select from the substitute alternate question mark in the second pair.

Letter: Envelope :: Coconut: ??

- (A) Eat - (Alternative 2)
- (B) Shell - (Alternative 1)
- (C) Food - (Optional 3)
- (D) Water - (Alternative 4)

Question No.61

1.00

Bookmark

In this question the relationship between different characters has been given in the statement. Two conclusions related to the statement have been given.

Statement: $S < C \leq R = E > A \geq M$

Conclusion:

- i) $S < E$
- ii) $R > M$

Select appropriate from the following options.

- A. The only conclusion i is logical is
- B. only the conclusions ii is logical
- C. Either the conclusions i or ii is rational
- D. Neither conclusion ii nor rational is
- E. i and ii both conclusions are rational.

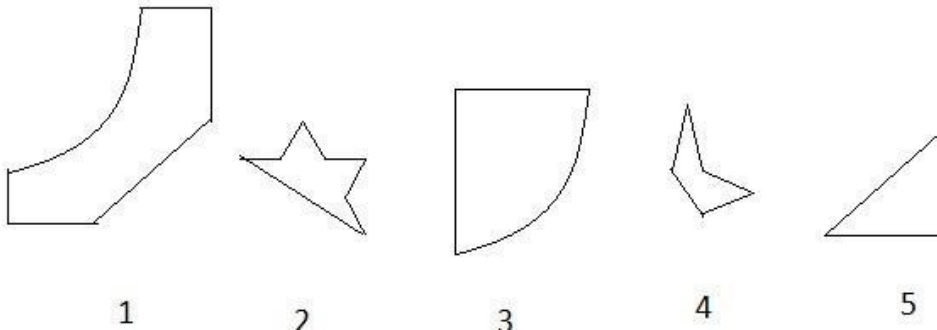
- (A) B - (Alternative 2)
- (B) E - (Alternative 4)
- (C) C - (Alternative 3)
- (D) A - (Alternative 1)

Question No.62

1.00

Bookmark

Select the correct option from the following options that creates a perfect square (three of the 5 images are given below):



- (A) 3,4,5 - (Optional 3)
- (B) 1,4,5 - (Alternative 2)
- (C) 2,3,4 - (Optional 1)
- (D) 1,3,5 - (Optional 4)

Question No.63

1.00

Bookmark

On the basis of the logic used in the first pair, select from the substitute alternate question mark in the second pair.

Z: M :: S: ??

- (A) F - (Alternative 4)
- (B) H - (Alternative 3)
- (C) G - (Alternative 2)

(D) D - (Alternative 1)

Question No.64

1.00

Bookmark

In a fixed code language, LAUGH is coded as EPRLK. How to code CHIRP in the same language?

- (A) KFESU - (Optional 3)
- (B) LFETV - (Optional 1)
- (C) LGFSU - (Alternative 2)
- (D) **LGFTV - (Alternative 4)**

Question No.65

1.00

Bookmark

Four of the following given five are similar in some way and so they form a group among themselves. Which of these is not related to this group?

Yell, murmur, shout, scream, cry

- (A) Scream - (Alternative 1)
- (B) Shout - (Alternative 3)
- (C) Yell - (Alternative 2)
- (D) **Murmer - (Alternative 4)**

Question No.66

1.00

Bookmark

If the mirror is placed on the shaded line then the correct mirror image of the given picture will be-



- (A) **WORRAƎ** - (Optional 1)
- (B) **ƎAƆƆAƆ** - (Optional 2)
- (C) **WORRAƎ** - (Optional 3)
- (D) **WORRAƆ** - (Optional 4)

Question No.67

1.00

Bookmark

In this question, there are three statements showing the relationship between the letters. Three conclusions related to them are given i, ii, and iii. Assuming the statements as truth, decide which conclusions are completely true in relation to the statements.

Statement: $C < R = E \leq D$; $D = O < W \geq N$; $N > U \geq T$

Conclusion:

i) $C < W$

ii) $W \geq T$

iii) $D < N$

- (A) Either ii or iii - (optional 3)
(B) **Only i - (Optional 1)**
(C) Only i and ii or iii - (optional 4)
(D) Only i and iii - (Alternative 2)

Question No.68

1.00

Bookmark

If N is the spouse of M (husband or wife) whose daughter is O. M is the grandfather of P, whose father is L. O is not married to L. What is the relation of O to P?

- (A) Mom - (Alternative 1)
(B) **Aunt - (Alternative 3)**
(C) Sister - (Alternative 2)
(D) Cage - (Alternative 4)

Question No.69

1.00

Bookmark

Read the given information carefully and answer the questions related to it.

The eight friends A, B, C, D, E, F, G and H are sitting in one line, not necessarily their order. 4 of them are on the north side and 4 towards the south.

- i) D and G are sitting on both ends of the line.
ii) C and E are neighbors.
iii) The location of F is the fourth on the right side of G and the second to the left of the B.
iv) D is not a neighbor of B or C.
v) A is sitting at the third position on the right side of E, whose mouth is towards the north.
vi) The faces of F, A and D are in the same direction.

Who is sitting at the fourth position on the right side of C?

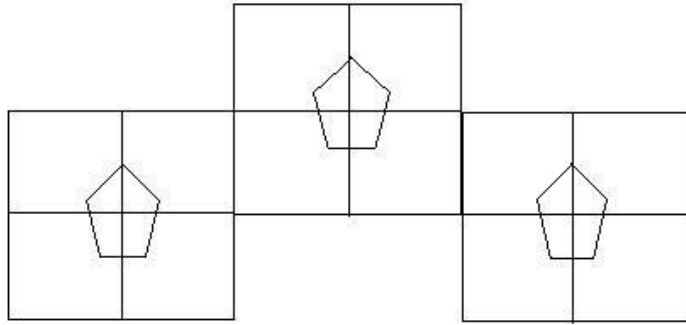
- (A) B - (Alternative 4)
(B) D - (Alternative 3)
(C) **H - (Alternative 2)**
(D) G - (Alternative 1)

Question No.70

1.00

Bookmark

How many classes are there in the given picture?



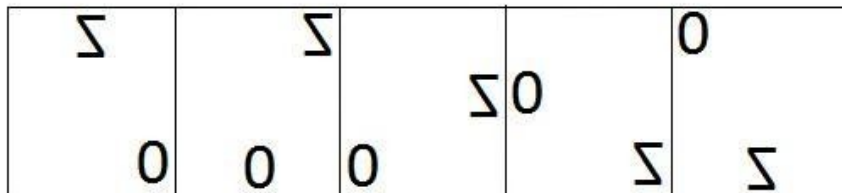
- (A) 16 - (Optional 2)
- (B) 12 - (Optional 3)
- (C) 15 - (Optional 4)
- (D) 13 - (Optional 1)

Question No.71

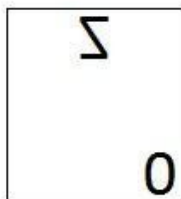
1.00

Bookmark

Select the appropriate picture to come forth from the given series with the options?

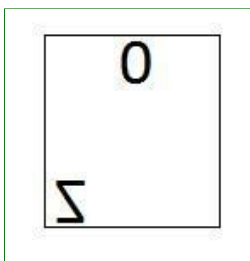


- (A)



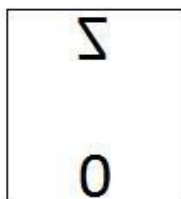
- (Optional 1)

- (B)



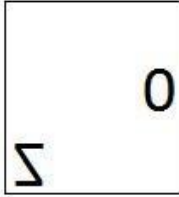
- (Optional 2)

- (C)



- (Optional 3)

- (D)



- (Optional 4)

Question No.72

1.00

Bookmark

Find the next number in the following series:

37, 38, 42, 51, 67, ?

- (A) 97 - (Optional 3)
- (B) 99 - (Optional 1)
- (C) 92 - (Alternative 2)
- (D) 102 - (Optional 4)

Question No.73

1.00

Bookmark

Read the given information carefully and answer the questions related to it.

The eight friends A, B, C, D, E, F, G and H are sitting in one line, not necessarily their order. 4 of them are on the north side and 4 towards the south.

- i) D and G are sitting on both ends of the line.
- ii) C and E are neighbors.
- iii) The location of F is the fourth on the right side of G and the second to the left of the B.
- iv) D is not a neighbor of B or C.
- v) A is sitting at the third position on the right side of E, whose mouth is towards the north.
- vi) The faces of F, A and D are in the same direction.

In the following options, which group of all members of the group are in the north?

- (A) H, E & B - (Alternative 3)
- (B) A, F & G - (Alternative 4)
- (C) E, C & G - (Alternative 1)
- (D) A, D & B - (Alternative 2)

Question No.74

1.00

Bookmark

In a fixed code language SHRIEK is coded as HSIRVP. How will SQUEAL be coded in the same language?

- (A) QSEUOZ - (Optional 2)
- (B) HJFVZO - (Optional 3)
- (C) HJVFOZ - (Alternative 4)
- (D) QSEULA - (Optional 1)

Question No.75

1.00

Bookmark

In this question three statements and three related conclusions have been given. You should consider the things given in the statements as truth and to determine which conclusions are relevant in relation to the statements?

Statement: All pen pencils are all pad pencils. All are lid pads.

Conclusion:

- i. There are some pen pads.
- ii. All are lid pencils.
- iii. There are some pencil pens.

- (A) **Only ii and iii are logical - (optional 3)**
- (B) Only I and ii are rational - (Alternative 2)
- (C) All are rational - (Alternative 1)
- (D) Only i is rational - (Alternative 4)

Question No.76

1.00

Bookmark

Read the following statements and answer the question on their basis.

A + B means that A is B's son,

AB is the daughter of A, B is

A * B, meaning A is B's sister

A / B means A is a brother of B

based on the above information. According to the equation $W + X * Y / Z$, what is the relation of Z to Z?

- (A) **Nephew - (Alternative 3)**
- (B) Nice - (Alternative 1)
- (C) Uncle - (Alternative 2)
- (D) Aunt - (Alternative 4)

Question No.77

1.00

Bookmark

On the basis of the logic used in the first pair, select from the substitute alternate question mark in the second pair.

1213: 14 :: 4501: ??

- (A) 10 - (Optional 1)
- (B) **20 - (Optional 2)**
- (C) 40 - (Optional 4)
- (D) 30 - (Optional 3)

Question No.78

1.00

Bookmark

Two statements in this question and two related findings have been given in the form of i and ii. You should consider the statements given in the statements as valid and to determine which conclusions are relevant in relation to the statements?

Statement: All candles are gone. All the lights are out.

Conclusion:

- i). Some candles are lighter.
- ii). Some wickers are lighters.

Select one of the most suitable in the following options:

- A. The only conclusion i rational is
 - B. The only conclusion ii is logical
 - C. The conclusions i or ii is logical
 - D. Neither the conclusion ii nor the rational is
 - E. i and ii both conclusions are rational.
- (A) A - (Alternative 1)
 - (B) C - (Alternative 3)
 - (C) **B - (Alternative 2)**

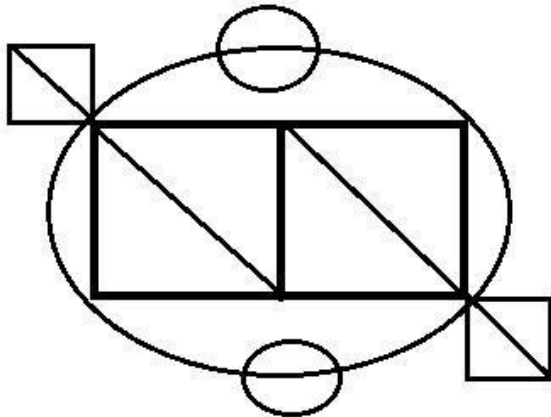
(D) D - (Alternative 4)

Question No.79

1.00

Bookmark

How many right angled triangles can be made from the given picture?



- (A) 8 - (Optional 1)
- (B) 5 - (Optional 3)
- (C) 12 - (Optional 4)
- (D) 6 - (Optional 2)

Question No. 80

1.00

Bookmark

A woman pointing to a man said, "She is the grandfather of daughter of the daughter of my father's wife." How is that person related to that woman?

- (A) Uncle - (Alternative 2)
- (B) In-laws - (Alternative 1)
- (C) Brother - (Alternative 4)
- (D) Grandfather - (Alternative 3)

Question No.81

1.00

Bookmark

A question has been given in this question and a statement related to it. Read the passage carefully and review the statement based on it.

Currently, logically, there is tremendous opportunity for this time the most famous Indian Test cricket team. It has won only two of the last eight Tests played out of Asia, the remaining six are lost. It needs to improve its performance, and Australia is the most suitable place for it. Because the conditions at this time are completely different.

A good series of winning a series in Australia can not be any more. Because at that time his two middle-order batsmen Steve Waugh and Ricky Ponting are not in the Australian team, who always perform well for their team and due to which teams are afraid of playing against them on their home pitches.

The current Australian team has lost three of the last five Test series. Australia is in miserable position in the absence of two of their best batsmen, Steve Smith and David Warner. Both of these batsmen are still suspended from three.

Statement: The author has mentioned Steve Waugh and Ricky Ponting in reference to how strong the Australian team was earlier.

Select the most appropriate option from the following.
A-statement is absolutely true.

B-Query is probably true.
C-statement can not be reviewed.
D-statement is completely false.

- (A) **A - (Alternative 1)**
(B) B - (Alternative 2)
(C) C - (Alternative 3)
(D) D - (Alternative 4)

Question No.82

1.00

Bookmark

Four of the following given five are similar in some way and so they form a group among themselves. Which of these is not related to this group?

NPR, OQM, BDF, VXZ, HJL

- (A) NPR - (Optional 4)
(B) BDF - (Alternative 1)
(C) HJL - (Optional 3)
(D) **OQM - (Alternative 2)**

Question no.83

1.00

Bookmark

Read the given information carefully and answer the questions related to it.

The eight friends A, B, C, D, E, F, G and H are sitting in one line, not necessarily their order. 4 of them are on the north side and 4 towards the south.

- i) D and G are sitting on both ends of the line.
ii) C and E are neighbors.
iii) The location of F is the fourth on the right side of G and the second to the left of the B.
iv) D is not a neighbor of B or C.
v) A is sitting at the third position on the right side of E, whose mouth is towards the north.
vi) The faces of F, A and D are in the same direction.

Based on the above-mentioned arrangement of seating, which statement given in the following options is true?

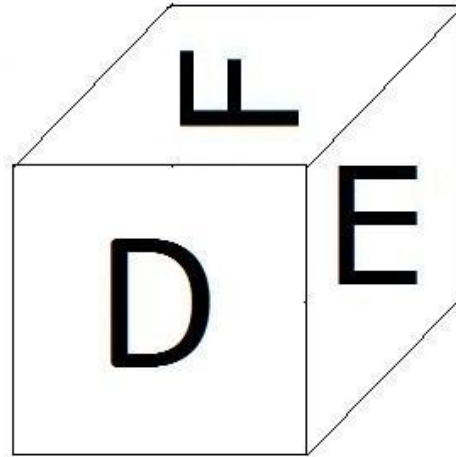
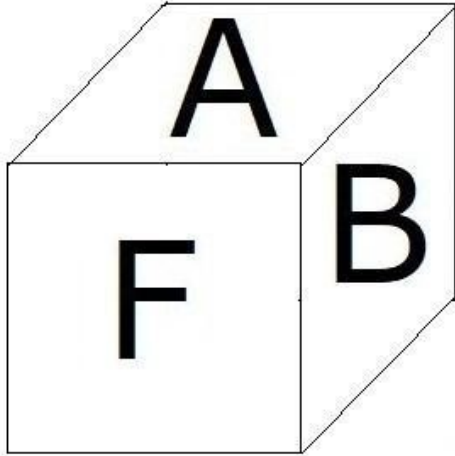
- (A) E and A are sitting in the same direction - (Optional 1)
(B) Two people are sitting between C and H - (Alternative 3)
(C) **D is in the opposite direction of mouth B - (Alternative 4)**
(D) G is sitting at the fourth position on the right side of F - (Alternative 2)

Question no.84

1.00

Bookmark

According to the diagram, there are 6 letters A, B, C, D, E and F on the surfaces of one dice shown. Which letter is marked on the surface opposite the A face surface?



- (A) F - (Optional 3)
(B) C - (Alternative 4)
(C) D - (Alternative 2)
(D) E - (Alternative 1)

Question no.85

1.00

Bookmark

Find the next number in the following series:

57, 59, 62, 67, 74,?

- (A) 90 - (Optional 3)
(B) 93 - (Alternative 4)
(C) 85 - (Optional 1)
(D) 86 - (Alternative 2)

Question no.86

1.00

Bookmark

If you sell any item for 513 rupees, then the profit you received for selling the same item at 993 rupees is 60% loss. Find the purchase price of that item? (In Rs.)

- (A) 493 - (Alternative 4)
(B) 593 - (Optional 3)
(C) 793 - (Alternative 2)
(D) 693 - (Optional 1)

Question No.87

1.00

Bookmark

At the same amount, the difference of compound interest and simple interest earned in two years, at the interest rate of interest, is 72 rupees. If the interest rate is 4% annual, then calculate the amount invested (in Rs.)?

- (A) 43,000 - (Optional 4)
(B) 44,000 - (Optional 2)
(C) 45,000 - (Optional 1)
(D) 42,000 - (Optional 3)

Question no.88

1.00

Find the value of x:

$$\frac{2}{5}(x) + \frac{3}{10}(x) - \frac{3}{5}(x) = 521$$

- (A) 5310 - (Optional 3)
 (B) 5110 - (Optional 1)
 (C) **5210 - (Alternative 2)**
 (D) 5410 - (Optional 4)

Question No.89

1.00

Bookmark

A person reaches the hospital with a speed of 15 kmph and a delay of 4 minutes from the hostel. If he used to ride a bike at a speed of 20 kmph then it would reach 4 minutes early. Find the distance between the hostel and the college? (in km)

- (A) 6 - (Optional 2)
 (B) **8 - (Optional 4)**
 (C) 5 - (Optional 1)
 (D) 7 - (Optional 3)

Question No.90

1.00

Bookmark

Simplify:

$$15.37 + 13.52 + 16.37 - 28.46 = 3 \times ?$$

- (A) 5.7 - (Optional 4)
 (B) 5.5 - (Optional 2)
 (C) 5.4 - (Optional 1)
 (D) **5.6 - (Optional 3)**

Question No.91

1.00

Bookmark

Martin donates 13% of his salary to an institution of blind, 12% of orphans, and 14% of the body of the organism, and gives 16% of his salary as help in setting up a medical camp. The remaining Rs 42,300 He deposits in the bank for the monthly expense. How much does he donate to the orphans? (In Rs.)

- (A) 11,480 - (Optional 3)
 (B) 11,580 - (Optional 4)
 (C) **11,280 - (Optional 1)**
 (D) 11,380 - (Optional 2)

Question No.92

1.00

Bookmark

The ratio of milk and water to 77 liters is 3: 4. If this ratio is changed to 3: 5, then know the amount of excess water mixed in the mixture. (In liters)

- (A) 12 - (Optional 2)
(B) **11 - (Optional 1)**
(C) 13 - (Optional 3)
(D) 14 - (Optional 4)

Question No.93

1.00

Bookmark

A bulb maker company found that 13% of its total product was poor. If the number of correct products is 4872, then find the number of bad products?

- (A) 708 - (Optional 1)
(B) **728 - (Optional 3)**
(C) 718 - (Alternative 2)
(D) 738 - (Alternative 4)

Question No.94

1.00

Bookmark

When the radius of the circle is 18 times its circumference will increase the circumference of the circle of the previous?

- (A) 17 - (Optional 1)
(B) 20 - (Optional 4)
(C) 19 - (Optional 3)
(D) **18 - (Optional 2)**

Question No.95

1.00

Bookmark

A person travels at the speed of 12 kmph, 14 kmph and 28 kmph on the surface of an equilateral triangular plane. Find her average speed? (in kmph)

- (A) 15.95 - (Optional 4)
(B) 15.65 - (Optional 1)
(C) **15.75 - (Optional 2)**
(D) 15.85 - (Optional 3)

Question No.96

1.00

Bookmark

The station master decided to increase the length of a rectangular digital board by 5% and reduce the width by 5%. Find out the total change in the area of the board?

- (A) **0.25% reduction - (Optional 2)**
(B) 0.25% increase - (Optional 1)
(C) 0.36% reduction - (Optional 4)
(D) 0.36% increase - (Optional 3)

Question No.97

1.00

Bookmark

Divide a number by 119, 11 remains the remainder. By dividing the same number by 17, how much will the remainder get?

-

- (A) 14 - (Optional 1)
- (B) 12 - (Optional 3)
- (C) 13 - (Optional 2)
- (D) **11 - (Optional 4)**

Question No.98

1.00

Bookmark

594 How can the mobile number of students of any class be divided equally?

- (A) 17 - (Optional 3)
- (B) 14 - (Optional 1)
- (C) **16 - (Optional 2)**
- (D) 15 - (Optional 4)

Question No.99

1.00

Bookmark

25√3 cm If the cuboid is melted by making the cuboid, then its height will be, if the length of the cuboid is equal to the arm of the cube and the width of the cuboid is 12.5 cm. (from cm)

- (A) 51 - (Alternative 2)
- (B) 53 - (Alternative 4)
- (C) **50 - (Optional 1)**
- (D) 52 - (Optional 3)

Question No.100

1.00

Bookmark

Simplify:

$$289^2 \times 68 \div 17^5 \times 1021 = ?$$

- (A) 4074 - (Optional 3)
- (B) 4064 - (Alternative 2)
- (C) 4054 - (Optional 1)
- (D) **4084 - (Optional 4)**

Question No.101

1.00

Bookmark

Find the value of x:

$$\sqrt{361} \div 19 + \sqrt{400} = 1 \times x$$

- (A) 24 - (Optional 4)
- (B) 22 - (Optional 2)
- (C) 23 - (Optional 3)
- (D) **21 - (Optional 1)**

Question No.102

1.00

Bookmark

Amir divides 850 gifts into 4 children. First gift of the child in the part of the child, twice the gift which came in the other child's part, three times the gifts which came in the third child's part and four times the gift of the fourth child, all are equal. How many gifts are available to both the first and the second?

- (A) 412 - (Optional 1)
(B) 312 - (Alternative 2)
(C) 612 - (Optional 4)
(D) 512 - (Optional 3)

Question No.103

1.00

Bookmark

7,400, 8% of the annual interest rate was invested. If after 5 years, that amount is withdrawn and half the amount is invested in the stock market, then what will be the remaining amount (in Rs.)?

- (A) 5,160 - (Optional 3)
(B) 5,180 - (Optional 4)
(C) 5,120 - (Optional 1)
(D) 5,140 - (Alternative 2)

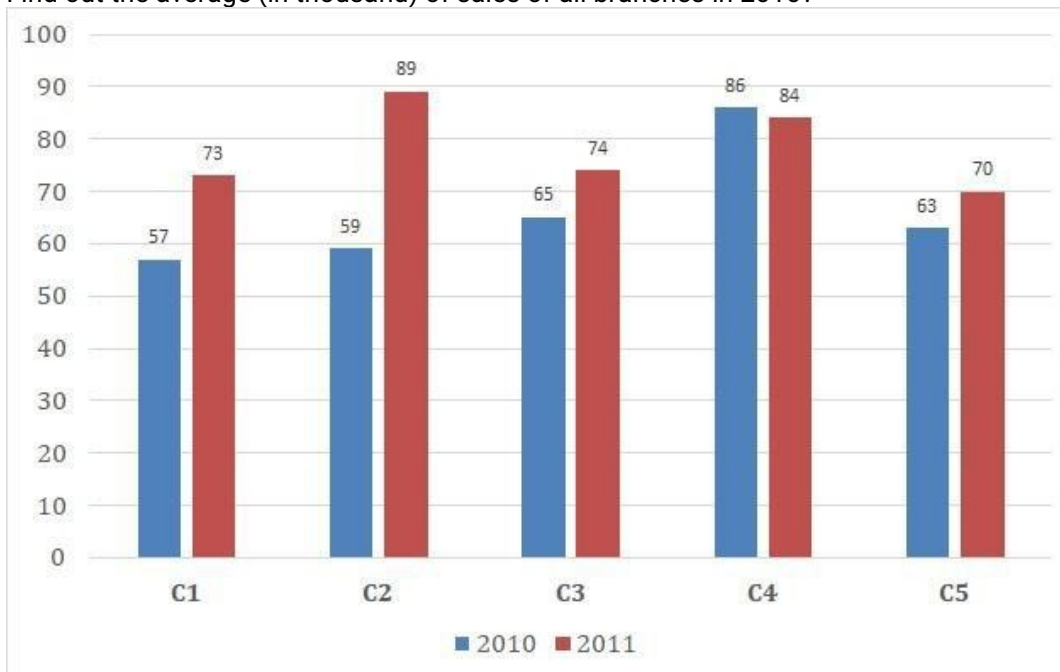
Question No.104

1.00

Bookmark

Instructions:

Study the graph the following times and answer the question based on it? Two consecutive years of five branches of a publishing company have been given in the sale of books (thousand) in 2010 and 2011. Find out the average (in thousand) of sales of all branches in 2010?



- (A) 64 - (Optional 1)
(B) 70 - (Alternative 4)
(C) 66 - (Alternative 2)
(D) 68 - (Optional 3)

Question No.105

1.00

Bookmark

A shopkeeper sells a product for Rs 2376 and earns 12.5% profit on it. How much will the half of the purchase price of that item be equal to? (In rupees)

- (A) 1,056 - (Optional 3)
- (B) 1,046 - (Optional 2)
- (C) 1,066 - (Optional 4)
- (D) 1,036 - (Optional 1)

Question No.106

1.00

Bookmark

A shopkeeper, with 45% increase in the purchase price of an item, has a discount of 45% on the sale after marking the price. So let's know the percentage of total profit or loss that it will get?

- (A) 19.36% Loss - (Optional 2)
- (B) 20.25% profit - (Optional 3)
- (C) 20.25% Loss - (Optional 4)
- (D) 19.36% profit - (Optional 1)

Question No.107

1.00

Bookmark

There are 10 bangles in a gift box. The average weight of the first 4 is 55 grams and the average weight of the remaining 6 bangles is 56 grams. Find the total average weight of all bangles (in grams)?

- (A) 55.4 - (Optional 1)
- (B) 55.7 - (Optional 4)
- (C) 55.5 - (Alternative 2)
- (D) 55.6 - (Optional 3)

Question No.108

1.00

Bookmark

There are different types of old coins in the ratio of 3: 5: 7 in a box, whose values are Rs 1, Rs 5 and Rs 10 respectively. If the total value of coins is Rs 588, then Rs 10 What is the total number of coins of value?

- (A) 44 - (Alternative 4)
- (B) 41 - (Optional 1)
- (C) 43 - (Optional 3)
- (D) 42 - (Optional 2)

Question No.109

1.00

Bookmark

The area of a square piece of glass is 1369 cm², which is placed above a table. The width between the glass pieces and one side of the table is 9 cm. Find the length of the table? (in cm)

- (A) 57 - (Optional 4)
- (B) 51 - (Optional 1)
- (C) 55 - (Optional 3)
- (D) 53 - (Alternative 2)

Question no.110

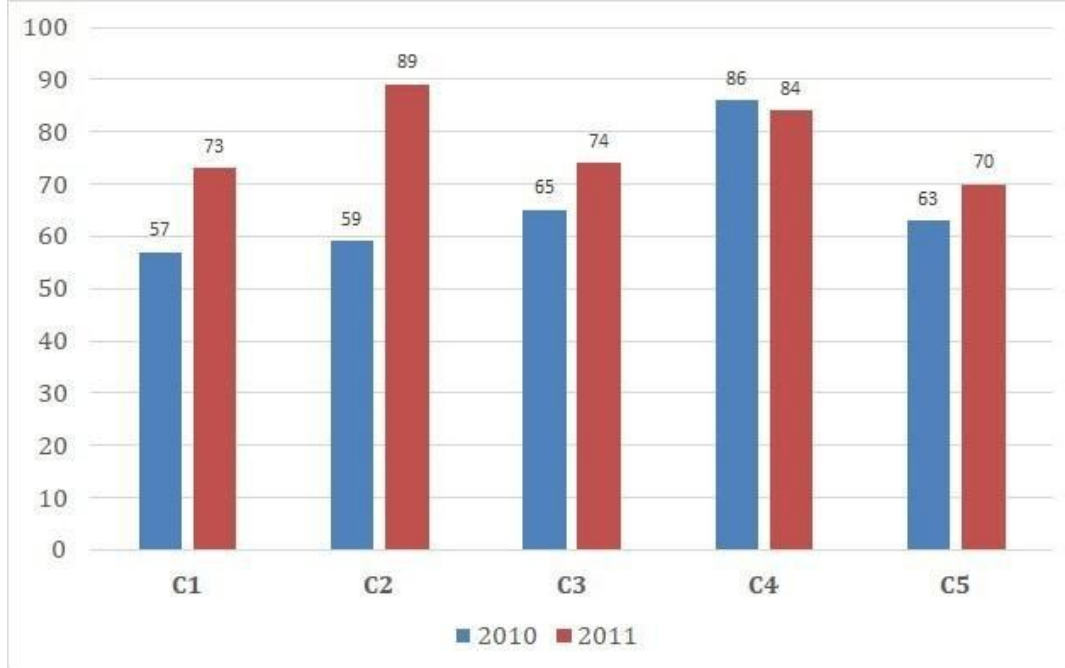
1.00

Bookmark

Instructions:

Study the graph the following times and answer the question based on it? Two consecutive years of five branches of a publishing company have been given in the sale of books (thousand) in 2010 and 2011.

Find out the total sales (in thousand) of the company's branches C1, C3 and C5 in both years?



- (A) 403 - (Optional 4)
(B) 400 - (Optional 1)
(C) 401 - (Alternative 2)
(D) 402 - (Optional 3)

Question No.111

1.00

Bookmark

The average weight of 69 notebooks kept in a box is 6.9 kg. Keep 1 notebook in the box and its average weight goes up to 7 kg. Know the load of new notebooks? (in kg)

- (A) 13.1 - (Optional 4)
(B) 13.6 - (Optional 2)
(C) 13.9 - (Optional 1)
(D) 13.4 - (Optional 3)

Question no.112

1.00

Bookmark

Sheila walks at its usual speed ($\frac{19}{20}$) and determines the normal time it takes in determining a certain distance in a certain distance of 5 minutes from the time it takes in normal speed. (in a minute)

- (A) 85 - (Alternative 2)
(B) 80 - (Optional 3)
(C) 95 - (Optional 1)
(D) 90 - (Alternative 4)

Question No.113

1.00

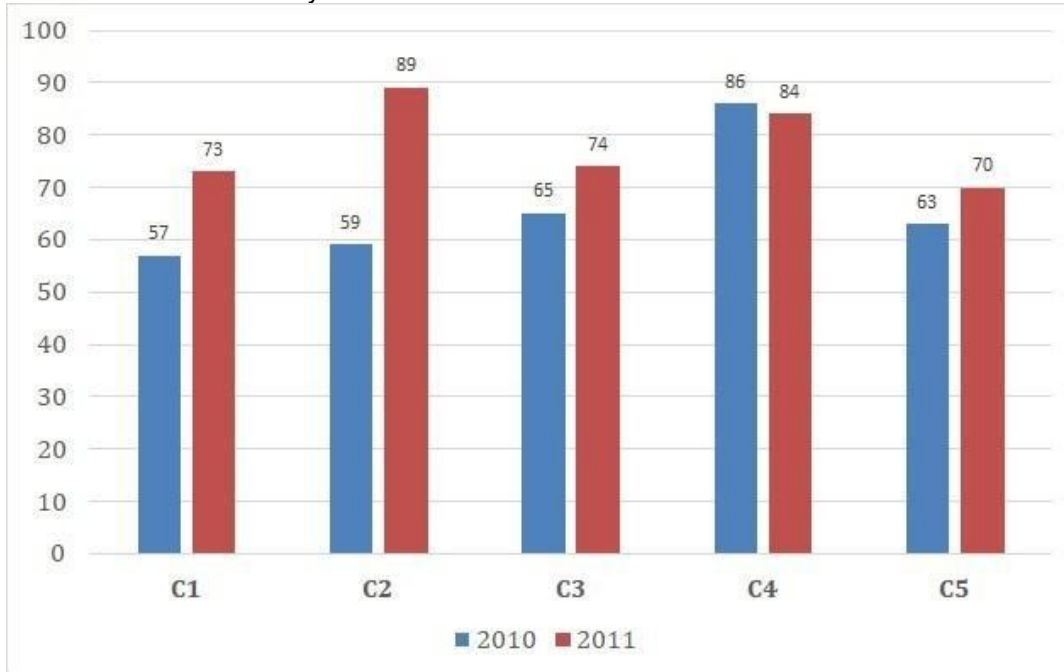
Bookmark

Instructions:

Study the graph the following times and answer the question based on it?

Two consecutive years of five branches of a publishing company have been given in the sale of books (thousand) in 2010 and 2011. Find the ratio of the total sales done in both the years of branch C2 and

the total sales in the two years of branch C4?



- (A) 47:85 - (Optional 2)
- (B) 37:58 - (Optional 3)
- (C) 74:85 - (Optional 4)
- (D) 73:58 - (Optional 1)

Question No.114

1.00

Bookmark

Vimal receives 44 points out of 80 in French, 83 out of 100 in English, 45 in 70 in Spanish and 38 in 50 in Japanese. Find the total percentage of the marks obtained by him? (%In)

- (A) 50 - (Optional 1)
- (B) 70 - (Alternative 3)
- (C) 80 - (Alternative 4)
- (D) 60 - (Optional 2)

Question No.115

1.00

Bookmark

The English company based on a subsidiary project has 627 male and 627 female workers. The average productivity of all employees is 72 calls / day. If a male worker receives 72 calls / day, how much will the number of calls received by women employees per day?

- (A) 74 - (Optional 4)
- (B) 73 - (Optional 3)
- (C) 72 - (Alternative 2)
- (D) 71 - (Optional 1)

Question no.116

1.00

Bookmark

A train takes 56 seconds to cross 238 m long bridge. If the same train takes 22 seconds to cross a sign board, then know the length of the train? (in m)

- (A) 151 - (Optional 1)
- (B) 154 - (Optional 3)
- (C) 153 - (Alternative 2)
-

(D) 152 - (Optional 4)

Question No.117

1.00

Bookmark

On a compound interest, a sum is tripled to the original amount in 4 years. In how many years will it be 729 times its original amount?

- (A) 23 - (Optional 3)
(B) 24 - (Optional 2)
(C) 21 - (Optional 1)
(D) 22 - (Optional 4)

Question no.118

1.00

Bookmark

Find the product of those numbers whose lowest equator (L) is 8249 and the maximum is equal to (ms) 1?

- (A) 8549 - (Alternative 4)
(B) 8449 - (Optional 3)
(C) 8349 - (Optional 2)
(D) 8249 - (Optional 1)

Question No.119

1.00

Bookmark

The ratio of salaries to Hamid, Clement and Ganesh is 3: 5: 7. If Ganesha gets Rs 884 from Hamid, then how much is Clement's salary (in Rs.)?

- (A) 1,104 - (Optional 3)
(B) 1,105 - (Optional 4)
(C) 1,103 - (Alternative 2)
(D) 1,102 - (Optional 1)

Question No.120

1.00

Bookmark

357! Find the number of trailing zeros in?

- (A) 87 - (Optional 3)
(B) 88 - (Alternative 4)
(C) 85 - (Optional 1)
(D) 86 - (Alternative 2)