

Roll No:

Registration No:

Name:

Date: **06-Jan-2019 -3rd Shift**

Examination: **Online Examination - SI**

Section 1 - Online Examination

Question No.1

1.00

Bookmark

Which of the following turned the Sikhs into a military sect?

- (A) **Guru Gobind Singh - (Alternative 2)**
- (B) Guru Teg Bahadur - (Alternative 1)
- (C) Guru Arjan Dev - (Alternative 3)
- (D) Banda Brave - (Alternative 4)

Question No.2

1.00

Bookmark

Who defeated the Marathas in the third battle of Panipat?

- (A) **Ahmed Shah Abdali - (Alternative 4)**
- (B) Abdullah Abdullah - (Alternative 2)
- (C) Nadir Shah - (Alternative 1)
- (D) Mujum Khan - (Alternative 3)

Question No.3

1.00

Bookmark

The purpose of the Kyoto Protocol is-

- (A) Protecting Wetland - (Alternative 4)
- (B) Minimizing Atmospheric Pollution - (Alternative 1)
- (C) **Reducing greenhouse gas emissions - (Alternative 2)**
- (D) Reducing electromagnetic radiation - (Alternative 3)

Question No.4

1.00

Bookmark

Which of the following cities is called the entrance of north-east India?

- (A) Gangtok - (Alternative 1)
- (B) Aizawl - (Alternative 2)
- (C) Dispur - (Alternative 4)
- (D) **Guwahati - (Alternative 3)**

Question No.5

1.00

Bookmark

Which country does not have ports in Europe?

- (A) **Switzerland - (Alternative 2)**
- (B) Italy - (Alternative 4)
- (C) France - (Alternative 1)

(D) Spain - (Alternative 3)

Question No.6

1.00

Bookmark

What is the property of not being extremely addictive on its mirror image of a substance?

- (A) Asymmetry - (Alternative 2)
- (B) **Charity - (Alternative 3)**
- (C) Acharya - (Alternative 1)
- (D) Symmetry - (Alternative 4)

Question No.7

1.00

Bookmark

Electric accelerated particles under acceleration by the electric and magnetic field are transmitted in the form of _____.

- (A) **Electromagnetic Radiation - (Alternative 2)**
- (B) Electromagnetic frequency - (Optional 3)
- (C) Electromagnetic Dimension - (Alternative 4)
- (D) Electromagnetic Induction - (Alternative 1)

Question No.8

1.00

Bookmark

Indian court system follows the _____ type justice system.

- (A) Monopoly - (Alternative 3)
- (B) **Integrated - (Optional 1)**
- (C) Dual - (Optional 2)
- (D) None of these - (Alternative 4)

Question No.9

1.00

Bookmark

What is the process of breeding by which high vitamins or protein and high-fat crops are grown?

- (A) Inbuilt - (Optional 4)
- (B) Tissue Culture - (Alternative 1)
- (C) InterSpace Hybridization - (Alternative 3)
- (D) **Bio fortification - (Alternative 2)**

Question No.10

1.00

Bookmark

Panama Canal Adds-

- (A) Arctic Ocean to the Indian Ocean - (Alternative 4)
- (B) Pacific Ocean to Indian Ocean - (Alternative 3)
- (C) **Pacific Ocean to the Atlantic Ocean - (Alternative 1)**
- (D) With the Indian Ocean to the Atlantic Ocean - (Alternative 2)

Question No.11

1.00

Bookmark

The ratio of hydraulic stress and its associated tetanic tension is called _____.

- (A) Equality - (Optional 4)
- (B) Compression - (Alternative 2)
- (C) Semi modulus - (Alternative 1)
- (D) **Volume amplitude modulus - (Alternative 3)**

Question No.12

1.00

Bookmark

Which of the following is not a major factor of production?

- (A) Land - (Alternative 1)
- (B) **Transportation - (Alternative 2)**
- (C) Diligence - (Alternative 3)
- (D) Capital - (Optional 4)

Question No.13

1.00

Bookmark

What accounts does the CAG audit?

- (A) Public Sector Undertaking (PSU) and Central Agencies - (Optional 3)
- (B) **Central Government, State Government and other government financial institutions - (Alternative 2)**
- (C) Only Central Government - (Alternative 1)
- (D) Only State Government - (Alternative 4)

Question No.14

1.00

Bookmark

Which of these is found only in plants?

- (A) Nuclei - (Alternative 4)
- (B) Cell Structure - (Alternative 2)
- (C) Cell membrane - (Alternative 1)
- (D) **Cell wall - (Alternative 3)**

Question No.15

1.00

Bookmark

"Maiden Over" is related to which game?

- (A) **Cricket - (Alternative 3)**
- (B) Polo - (Alternative 4)
- (C) Wrestling - (Alternative 2)
- (D) Football - (Optional 1)

Question No.16

1.00

Bookmark

Which of these lakes is found in Jammu and Kashmir?

- (A) Nainital - (Alternative 2)
- (B) Pulukat - (Alternative 4)
- (C) **Soory Mori - (Alternative 3)**
- (D) Bhimtal - (Alternative 1)

Question no.17

1.00

Bookmark

The constitution of the joint sitting of the two houses of Parliament has been taken from which constitution?

- (A) Soviet Constitution - (Alternative 4)
- (B) French Constitution - (Alternative 2)
- (C) **Australian Constitution - (Alternative 3)**
- (D) Irish Constitution - (Alternative 1)

Question No.18

1.00

Bookmark

Non-executed property (NPA) is a loan or advance which is an overdue on the principal or interest payment for the period of _____.

- (A) **90 days - (Optional 3)**
- (B) 60 days - (Optional 2)
- (C) 120 days - (Optional 4)
- (D) 30 Days - (Optional 1)

Question No.19

1.00

Bookmark

Which of the following personality is not associated with the race competition?

- (A) Heema Das - (Alternative 3)
- (B) **Pankaj Advani - (Alternative 4)**
- (C) Usain Bolt - (Alternative 1)
- (D) PT Usha - (Alternative 2)

Question No.20

1.00

Bookmark

Which of the following states is found in the Jemu Glacier state?

- (A) Arunachal Pradesh - (Alternative 1)
- (B) Himachal Pradesh - (Alternative 2)
- (C) **Sikkim - (Alternative 3)**
- (D) Uttarakhand - (Alternative 4)

Question no.21

1.00

Bookmark

Which amendment act has been added to the original duties in the constitution?

- (A) 44th Constitutional Amendment Act - (Optional 1)
- (B) **42nd Constitutional Amendment Act - (Alternative 4)**
- (C) 51st Constitutional Amendment Act - (Alternative 3)
- (D) 38th Constitutional Amendment Act - (Alternative 2)

Question no.22

1.00

Bookmark

What is the 'work or energy transfer rate'?

- (A) Joule - (Alternative 1)
-

(B) **Strength - (Optional 2)**

(C) Force - (Optional 3)

(D) Speed - (Optional 4)

Question no.23

1.00

Bookmark

Which of the following is the world's largest (according to area) freshwater lake?

(A) Lake Huron - (Alternative 3)

(B) Tittakka Lake - (Alternative 2)

(C) **Superior Lake - (Optional 1)**

(D) Lake Erie - (Alternative 4)

Question no.24

1.00

Bookmark

Which of the following is the right to make parliamentary law in relation to Scheduled Areas?

(A) Ministers of Cabinet - (Alternative 2)

(B) **Governor - (Alternative 4)**

(C) Parliament - (Alternative 1)

(D) State Legislature - (Alternative 3)

Question No.25

1.00

Bookmark

Which of these is not a game of Asian origin?

(A) Kho-kho - (Alternative 1)

(B) Kabaddi - (Alternative 3)

(C) **Rugby - (Alternative 4)**

(D) Ludo - (Alternative 2)

Question no.26

1.00

Bookmark

Which of the following rivers is the tributary of Ganges?

(A) Manas - (Alternative 3)

(B) Subansiri - (Alternative 2)

(C) Zanskar - (Alternative 1)

(D) **Magnifier - (Alternative 4)**

Question no.27

1.00

Bookmark

In Sri Lanka, the Indo-Sri Lanka agreement, famous for mediation in the ethnic conflict, was signed-

(A) 1986 - (Alternative 4)

(B) 1988 - (Optional 1)

(C) 1989 - (Alternative 3)

(D) **1987 - (Alternative 2)**

Question no.28

1.00

Bookmark

"Economics is a science under which study of interactions of human behavior as an alternative and inadequate income is studied." Who is this statement?

- (A) **Robins - (Alternative 4)**
- (B) Alfred Marshall - (Optional 1)
- (C) Adam Smith - (Alternative 2)
- (D) Karl Marx - (Alternative 3)

Question no.29

1.00

Bookmark

The powers, rights and duties of Panchayats were included in the 11th Schedule of the Constitution by _____.

- (A) 69th Amendment Act - (Alternative 4)
- (B) 92nd Amendment Act - (Alternative 3)
- (C) 74th Amendment Act - (Alternative 2)
- (D) **73rd Amendment Act - (Alternative 1)**

Question No.30

1.00

Bookmark

The final war of Wandivash was fought between whom?

- (A) **English and French - (Alternative 1)**
- (B) English and Dutch - (Alternative 2)
- (C) Englishman and Arkhot Nawab - (Alternative 4)
- (D) English and Portuguese - (Alternative 3)

Question No.31

1.00

Bookmark

The world-renowned Charminar is located in _____.

- (A) **Hyderabad - (Alternative 1)**
- (B) New Delhi - (Alternative 4)
- (C) Mumbai - (Alternative 3)
- (D) Bangalore - (Alternative 2)

Question No.32

1.00

Bookmark

National Highway 1 goes from Delhi to _____.

- (A) Jammu - (Alternative 1)
- (B) **Amritsar - (Alternative 3)**
- (C) Srinagar - (Alternative 2)
- (D) Calcutta - (Alternative 4)

Question No.33

1.00

Bookmark

In organic compounds, the acyclic or open series compounds are also called _____.

- (A) Scalene compounds - (Alternative 2)
- (B) Scented compounds - (Alternative 1)

- (C) **Elephantnic compounds - (Alternative 4)**
(D) Synthetic compound (Optional 3)

Question No.34

1.00

Bookmark

According to the 2011 census, literacy rate in India is _____

- (A) **74% - (Optional 3)**
(B) 72% - (Optional 2)
(C) 70% - (Optional 1)
(D) 76% - (Optional 4)

Question No.35

1.00

Bookmark

Which of the following is located in Iron and Steel Factory in Karnataka?

- (A) Rourkela - (Alternative 3)
(B) Bhilai - (Alternative 1)
(C) **Bhadravati - (Alternative 4)**
(D) Bokaro - (Alternative 2)

Question No.36

1.00

Bookmark

In the given options, which of the Winter Olympics comes under the category of sports?

- (A) Rowing - (Alternative 4)
(B) Swimming - (Alternative 3)
(C) **Short Track - (Optional 1)**
(D) Water Polo - (Alternative 2)

Question No.37

1.00

Bookmark

The oath or administration of state ministers comes under which schedule of the Constitution?

- (A) Fifth Schedule - (Optional 3)
(B) Second Schedule - (Alternative 1)
(C) Fourth Schedule - (Alternative 4)
(D) **Third Schedule - (Alternative 2)**

Question No.38

1.00

Bookmark

Fiji is the governing body of which game?

- (A) Goal Ball - (Alternative 4)
(B) Gambling - (Alternative 3)
(C) Golf - (Alternative 1)
(D) **Gymnastics - (Alternative 2)**

Question No.39

1.00

Bookmark

Indian agriculture is often called-

- (A) Future of Millions of People - (Optional 4)
- (B) Redeemer of Humankind - (Alternative 1)
- (C) **Bets on Monsoon - (Alternative 2)**
- (D) World Food Store - (Alternative 3)

Question No.40

1.00

Bookmark

By what name was the famous ruler of Delhi named Farid?

- (A) Akbar - (Alternative 1)
- (B) **Sher Shah - (Alternative 2)**
- (C) Ismaili Shah - (Alternative 3)
- (D) Adil Shah - (Alternative 4)

Question No.41

1.00

Bookmark

Who is the chairperson of another commission set up to determine the relationship between the Center and the states?

- (A) **M.M. Poonchi - (Alternative 2)**
- (B) s. - Optional 3
- (C) P. V. Rajamannar - (Alternative 4)
- (D) R. S Sarkaria - (Alternative 1)

Question No.42

1.00

Bookmark

Animals whose cells are arranged in the embryo layer between the outer and internal membrane, are called _____

- (A) Monoblastic Beast - (Alternative 4)
- (B) Triploblastic Beast - (Alternative 1)
- (C) Symmetrical animals - (Alternative 2)
- (D) **Diaploblastic Beast - (Alternative 3)**

Question No.43

1.00

Bookmark

In the given options, which boxing does not belong to the game?

- (A) **Birdy - (Alternative 3)**
- (B) Uppercut - (Alternative 2)
- (C) Punch - (Alternative 4)
- (D) Knock Out - (Optional 1)

Question no.44

1.00

Bookmark

Which lens of the compound microscope creates real, inverted and bigger image?

- (A) Eyepiece - (Alternative 1)
- (B) **Objective - (Alternative 4)**
- (C) Focal Length - (Optional 2)
- (D) Focal Plane - (Alternative 3)

Question No.45

1.00

Bookmark

In which province did the famous Agartala movement "Tebhaga" occur?

- (A) Madras - (Alternative 3)
- (B) **Bengal - (Alternative 1)**
- (C) Sindh - (Alternative 4)
- (D) Uttar Pradesh - (Alternative 2)

Question No.46

1.00

Bookmark

Who has the right to provide permanent residency to the local residents of Jammu and Kashmir?

- (A) Chief Minister of State - (Alternative 4)
- (B) President - (Alternative 2)
- (C) Parliament - (Alternative 1)
- (D) **State Legislature - (Alternative 3)**

Question no.47

1.00

Bookmark

Which of the following Vedas is also known by the name of Brahma Vedas?

- (A) **Atharva Veda - (Alternative 3)**
- (B) Rig Veda - (Alternative 1)
- (C) Samveda - (Alternative 4)
- (D) Yajurveda - (Alternative 2)

Question no.48

1.00

Bookmark

According to the Integrated Energy Policy, when the demand for electricity is expected to be 8,00,000 MW?

- (A) 2021-21 - (Optional 1)
- (B) 2041-42 - (Optional 3)
- (C) **2031-32 - (Optional 2)**
- (D) 2051-52 - (Optional 4)

Question No.49

1.00

Bookmark

Who among the following performed Manipuri dance in Santiniketan and brought back his fame?

- (A) Mahatma Gandhi - (Alternative 4)
- (B) King Part Chandra - (Alternative 3)
- (C) Debendranath Tagore - (Alternative 1)
- (D) **Rabindranath Tagore - (Alternative 2)**

Question No.50

1.00

Bookmark

Moderation in state policy director principles is done on the basis of which majority of the following?

- (A) Simple majority - (Optional 4)
- (B) Special majority of parliament with consent of states - (Alternative 1)
- (C) **Special majority of Parliament - (Alternative 2)**
- (D) Full majority - (Optional 3)

Question No.51

1.00

Bookmark

Change the question mark with the option that follows the applied logic in the first pair.

R: J :: P: ??

- (A) A - (Alternative 2)
- (B) **H - (Alternative 1)**
- (C) N - (Alternative 3)
- (D) D - (Alternative 4)

Question No.52

1.00

Bookmark

Four of the following five are similar in a certain way, which create a group.
Which one of these is not related to this group?

V, Z, S, X, T

- (A) V - (Alternative 2)
- (B) X - (Alternative 4)
- (C) T - (Optional 1)
- (D) **S - (Optional 3)**

Question No.53

1.00

Bookmark

Change the question mark with the option that follows the applied logic in the first pair.

Wet: Dry :: Scheduled: ??

- (A) Perfect - (Optional 3)
- (B) Assigned - (Optional 2)
- (C) Pepared - (Alternative 1)
- (D) **Unplanned - (Optional 4)**

Question No.54

1.00

Bookmark

Change the question mark with the option that follows the applied logic in the first pair.

2357: 34 :: 5575: ??

- (A) 24 - (Optional 1)
- (B) **44 - (Optional 2)**
- (C) 60 - (Optional 4)
- (D) 40 - (Optional 3)

Question no.55

1.00

Bookmark

Carefully read the given information and answer the given questions.

A compartment of 7 compartments is kept on one table. Each box of stacks has a special vegetable. Carrots, onions, potatoes, cabbage, beans, pumpkins and ground vegetables are vegetables. The stack is computed in the order of 1, 2, 3 from the bottom of the stack.

- i) Carrot has been placed in any number of cans.
- ii) Cauliflower is not kept in the top tin box.
- iii) Potatoes are placed in a box kept in the middle of the pile.
- iv) The beans are placed in the pot top of the potato.
- v) Pumpkin is placed in the same number of carbohydrate under the carrots.
- vi) Potato is kept in the box which is neither close to the bean bins nor the cabbage box.
- vii) Zimbabwe is not in the No. 5 box.

Which of the following statements is correct with regard to the above order?

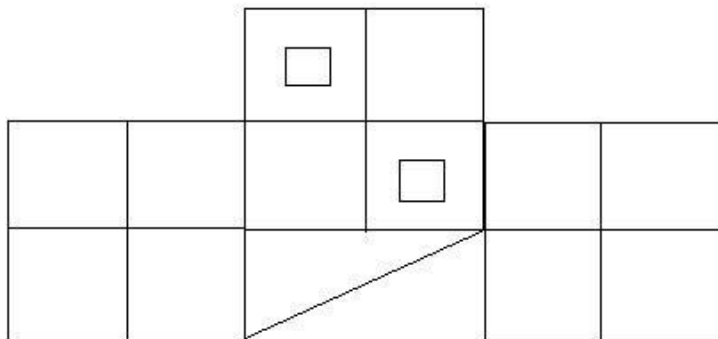
- (A) **Between potatoes, zimindic and onion. - (Optional 1)**
- (B) Carrot is in the 5th box. - (Optional 2)
- (C) Cabbage is in the second final box - (Alternative 3)
- (D) There are only 2 cans in the middle of the pumpkin and carrots. - (Optional 4)

Question no.56

1.00

Bookmark

How many classes are there in given picture?



- (A) 15 - (Optional 2)
- (B) **17 - (Optional 1)**
- (C) 12 - (Optional 3)
- (D) 13 - (Optional 4)

Question no.57

1.00

Bookmark

Carefully read the given information and answer the given questions.

A compartment of 7 compartments is kept on one table. Each box of stacks has a special vegetable. Carrots, onions, potatoes, cabbage, beans, pumpkins and ground vegetables are vegetables. Dump pile is counted in the order of 1, 2, 3 below.

- i) Carrot has been placed in any number of cans.
- ii) Cauliflower is not kept in the top tin box.
- iii) Potatoes are placed in a box kept in the middle of the pile.
- iv) The beans are placed in the pot top of the potato.
- v) Pumpkin is placed in the same number of carbohydrate under the carrots.

- vi) Potato is kept in the box which is neither close to the bean bins nor the cabbage box.
vii) Zimbabwe is not in the No. 5 box.

Which vegetable is kept between carrots and potato bins?

- (A) Beans - (Alternative 1)
(B) Landing - (Alternative 3)
(C) Onions - (Alternative 2)
(D) Pumpkin - (Alternative 4)

Question no.58

1.00

Bookmark

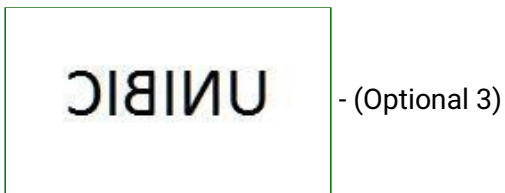
If a mirror is placed on the shaded line, which of the following options is the correct image of the given shape?



(A)

CIBINU - (Optional 1)

(B)



(C)

UNIBIC - (Optional 2)

(D)

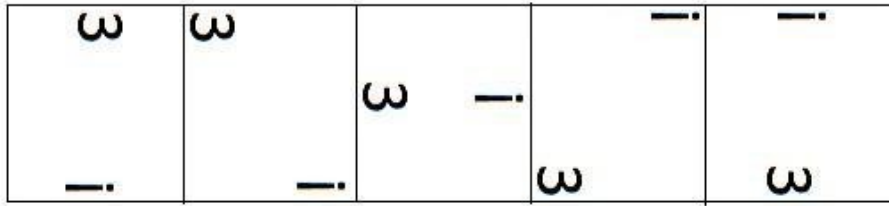
UNIBIC - (Optional 4)

Question No.59

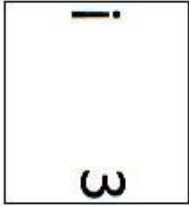
1.00

Bookmark

Select the appropriate picture to come forward in the given series.

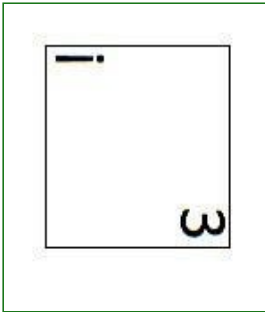


(A)



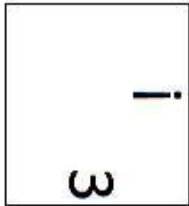
- (Optional 3)

(B)



- (Optional 2)

(C)



- (Optional 1)

(D)



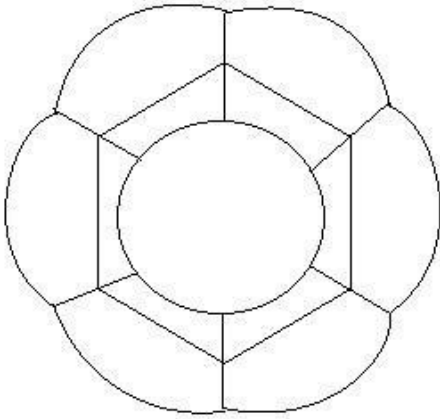
- (Optional 4)

Question No.60

1.00

Bookmark

How straight lines are there in the given picture?



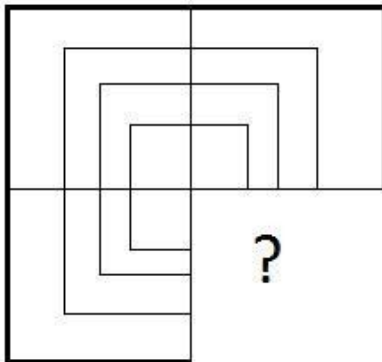
- (A) 32 - (Optional 3)
- (B) 15 - (Optional 1)
- (C) 20 - (Optional 2)
- (D) 24 - (Optional 4)

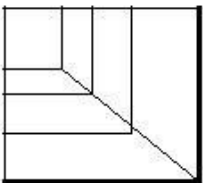
Question No.61

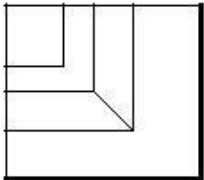
1.00

Bookmark

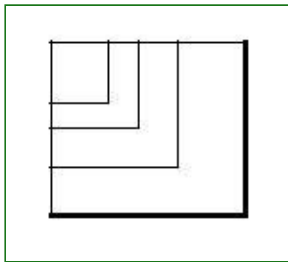
Select the correct option which will complete the format of the given image.



- (A)  - (Optional 4)

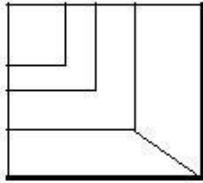
- (B)  - (Optional 2)

- (C)



- (Optional 3)

(D)



- (Optional 1)

Question No.62

1.00

Bookmark

Find the next number in the category.
61, 62, 66, 75, 91,?

- (A) 119 - (Alternative 4)
(B) **116 - (Optional 3)**
(C) 120 - (Optional 1)
(D) 122 - (Alternative 2)

Question No.63

1.00

Bookmark

In this question four statements are given in relation between the letters, three, i, ii and iii are given in relation to them. Assuming the statements as true, decide which conclusions are completely true in relation to the statements.

Statement. $B = S \geq T < H = A$; $C > Q = U < T < D$; $F > E > D = K$

findings

ii) $F > Q$

ii) $C > H$

iii) $Q < B$

- (A) Only ii) and iii) - (optional 3)
(B) **Only i) and iii) - (Optional 2)**
(C) All - (Optional 1)
(D) Only iii) - (Optional 4)

Question No.64

1.00

Bookmark

In this question, a passage and a statement related to it have been given. Read carefully the verse and review the statement based on it.

RAW JARGER, wildlife conservation officer of Andhra Pradesh, says that about 3 lakh birds of different castes have reached Kashmir Valley. Generally, about 9 lakh birds fall into the Kashmir valley every year from different cold regions of the whole world. That's why people of the valley get to see new species of birds every year. Birds can fly in any place to go to any place. At this time Kashmir is less cold compared to its original original habitat, so that they come in Kashmir Valley

every year in the month of September.

These birds can be helpful in promoting the valley in tourism. Ahmed, Shikara's owner, has to say that after the devastating incident of 2016, the arrival of tourists in the valley has decreased considerably. These migratory birds can complete this vacuum by attracting tourists from all over the world. Therefore, if the tourism department promotes it in a planned manner, it promotes it at a large scale, it will promote tourism in the valley.

Statement: The arrival of migratory birds in the valley every year in September can be used to promote tourism here.

Select one of the following options.

- A. The statement is definitely true.
- B. The statement is probably true.
- C. Statement can not be determined
- D. Statement is definitely wrong.

- (A) **A - (Alternative 1)**
- (B) B - (Alternative 2)
- (C) C - (Alternative 3)
- (D) D - (Alternative 4)

Question No.65

1.00

Bookmark

Banu said to Maruti, "Your mother is my husband's daughter, daughter of mother of mother-in-law."
How is the mother of Maruti related to Banu?

- (A) Sister - (Alternative 1)
- (B) Mother - (Alternative 3)
- (C) Granddaughter - (Alternative 2)
- (D) **Daughter - (Alternative 4)**

Question No.66

1.00

Bookmark

Change the question mark with the option that follows the applied logic in the first pair.
Countdown: Launch :: Breakfast: ??

- (A) Food - (Optional 3)
- (B) Rice - (Alternative 4)
- (C) **Lunch - (Optional 1)**
- (D) Tasty - (Alternative 2)

Question No.67

1.00

Bookmark

In a certain code language, if ENGAGE is written VMTZTV, then how will PLENTY be written in the same code language?

- (A) LOVMBG - (Optional 3)
- (B) **KOVMGB - (Alternative 2)**
- (C) KOVMBG - (Optional 1)
- (D) LOVMGB - (Alternative 4)

Question No.68

1.00

In this question the relationship between the various elements of the statement is shown. The statement has two conclusions.

Statement. $B \geq L = K < T = J$

Conclusion.

i) $J \geq B$

ii) $J > L$

Select the right from the following options.

(A) The only i conclusion is correct.

(B) Only ii conclusions are correct.

(C) either i either ii conclusion is correct.

(D) neither i nor ii conclusion is correct.

(E) i and ii both conclusions are correct.

(A) A - (Alternative 1)

(B) C - (Alternative 3)

(C) D - (Alternative 4)

(D) **B - (Alternative 2)**

Question No.69

1.00

Bookmark

Find the next number in the category.

17, 22, 44, 49, 98, ?

(A) **103 - (Alternative 4)**

(B) 100 - (Optional 1)

(C) 102 - (Optional 3)

(D) 101 - (Optional 2)

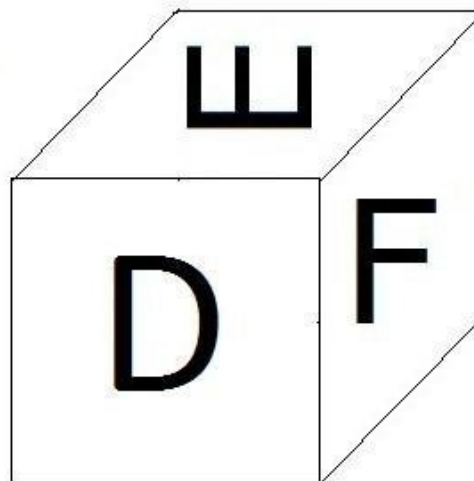
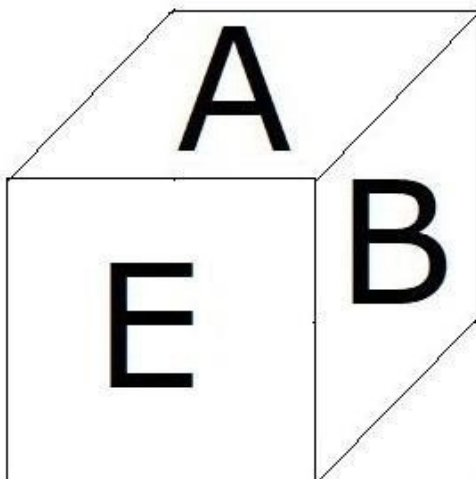
Question No.70

1.00

Bookmark

According to the given picture, 6 letters A, B, C, D, E and F are marked on each surface of the dice.

Which letter is marked on the surface opposite the surface F is inscribed on.



(A) D - (Alternative 2)

- (B) B - (Alternative 4)
(C) A - (Alternative 3)
(D) C - (Alternative 1)

Question No.71

1.00

Bookmark

Find the next number in the category.
50, 52, 55, 60, 67, ?

- (A) 81 - (Alternative 3)
(B) 82 - (Alternative 4)
(C) 78 - (Optional 1)
(D) 79 - (Alternative 2)

Question No.72

1.00

Bookmark

A statement in this question and two related findings have been given in the form of i and ii, assuming that the statements given in the statements to be true are to make sure that the conclusions regarding the statements are logical?

Statement: The schools in which the ratio of the number of teachers in proportion to the number of students is higher, they provide better education. ABC is a school with very little student numbers.

Conclusion:

- i. School ABC provides better education.
ii. Where there is a high proportion of the number of teachers in proportion to the number of students, there will be more attention to the children.

Choose the right one from the following options.

- (A) The only i conclusion is correct.
(B) Only ii conclusions are correct.
(C) either i conclusion or ii is correct.
(D) neither i conclusion nor ii is correct.
(E) Both i and ii findings are correct

- (A) B - (Alternative 2)
(B) E - (Alternative 4)
(C) A - (Alternative 1)
(D) C - (Alternative 3)

Question No.73

1.00

Bookmark

Three statements in this question and three related conclusions have been given to them, assuming you are truthful, it is to make sure that the conclusions related to the statements are logical?

Statement. All crows are hens. All poultry is pigeon. There are some chickens.

Conclusion: i) All crows are pigeons.
ii) Some crows are birds.
iii) Some birds are pigeons.

- (A) Only i and iii - (optional 3)
(B) Only i - (Optional 4)
(C) I and ii only - (Alternative 2)
(D) All - (Optional 1)

Question No.74

1.00

Bookmark

In this question, a passage and a statement related to it have been given. Read carefully the verse and review the statement based on it.

RAW JARGER, wildlife conservation officer of Andhra Pradesh, says that about 3 lakh birds of different castes have reached Kashmir Valley. In general, approximately 9 lakh birds each year come from various cold regions of the world in the Kashmir valley. Therefore, the people of the valley get new species of birds every year, birds can fly into any place and can go to any place. At this time Kashmir is less cold compared to its original original natural habitat, so that in the month of September every year Kashmir is in decline.

These birds can be helpful in promoting the valley in tourism. Ahmed, Shikara's owner, has to say that after the devastating incident of 2016, the arrival of tourists in the valley has decreased considerably. These migratory birds can fulfill this vacuum by attracting tourists from all over the world. Therefore, if the tourism department promotes it in a planned manner, it promotes it at a large scale, it will promote tourism in the valley.

Statement: Birds come in Kashmir Valley because it is cooler than their native natural habitats.

Choose one of the following options.

- A. The statement is definitely true.
B. The statement is probably true.
C. Statement can not be determined
D. Statement is definitely wrong.

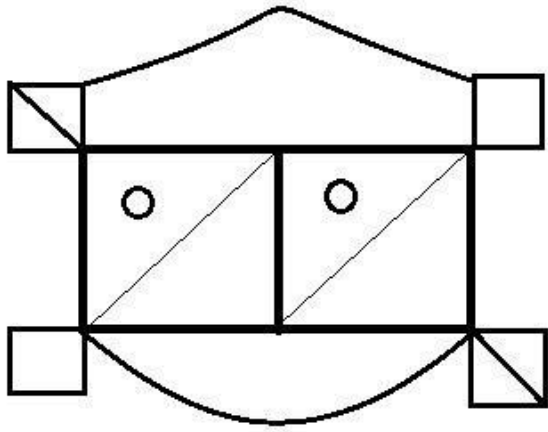
- (A) B - (Alternative 2)
(B) A - (Alternative 1)
(C) D - (Alternative 4)
(D) C - (Alternative 3)

Question No.75

1.00

Bookmark

How many right-angled triangles can be made from given figures?



- (A) 8 - (Optional 2)
 (B) 10 - (Optional 1)
 (C) 13 - (Optional 4)
 (D) 6 - (Optional 3)

Question No.76

1.00

Bookmark

Four of the following five are similar in a certain way, which create a group. Which one of these is not related to this group?

Null, Naught, Void, Ample, Nil

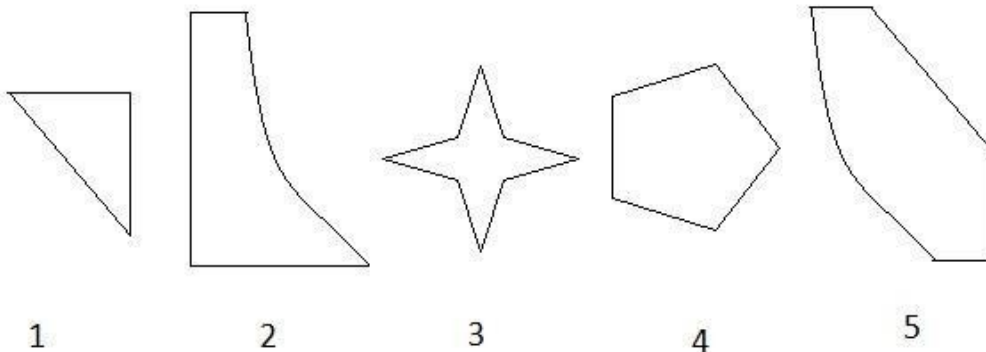
- (A) Naught - (Alternative 1)
 (B) Ample - (Optional 3)
 (C) Null - (Optional 4)
 (D) Void - (Optional 2)

Question No.77

1.00

Bookmark

Select the correct option from the given options that can make a full square. (3 of the 5 images are given below)



- (A) 2,4,5 - (Optional 3)
 (B) 1,4,5 - (Optional 4)
 (C) 1,3,4 - (Alternative 2)
 (D) 1,2,5 - (Optional 1)

Question No.78

1.00

Bookmark

Read the following logic and answer the given question.

A @ B is A, B's husband.

A # B is the wife of A, B.

A \$ B is the mother of A, B.

A% B is the father of A, B.

How is W, related to Z's mother in the equation W @ X \$ Y% Z?

- (A) SaaS - (Alternative 4)
- (B) Uncle - (Alternative 2)
- (C) Father - (Optional 3)
- (D) In-laws - (Alternative 1)

Question No.79

1.00

Bookmark

Carefully read the given information and answer the given questions.

A compartment of 7 compartments is kept on one table. Each box of stacks has a special vegetable. Carrots, onions, potatoes, cabbage, beans, pumpkins and ground vegetables are vegetables. Boxes are counted in the order of 1, 2, 3 below the heap.

- i) Carrot has been placed in any number of cans.
- ii) Cauliflower is not kept in the top tin box.
- iii) Potatoes are placed in a box kept in the middle of the pile.
- iv) The beans are placed in the pot top of the potato.
- v) Pumpkin is placed in the same number of carbohydrate under the carrots.
- vi) Potato is kept in the box which is neither close to the bean bins nor the cabbage box.
- vii) The landline is not in the No. 5 box.

What box is there in zimindand?

- (A) One of the boxes above pumpkin - (Alternative 2)
- (B) Box 1 - (Optional 4)
- (C) Box 2 - (Optional 1)
- (D) In the box below the beans - (Alternative 3)

Question No. 80

1.00

Bookmark

Find the next number in the category.

18, 37, 76, 155, 314,?

- (A) 639 - (Alternative 4)
- (B) 633 - (Alternative 2)
- (C) 636 - (Optional 3)
- (D) 630 - (Optional 1)

Question No.81

1.00

Bookmark

Two statements in this question and the two conclusions related to them have been given in the form of i and ii, assuming that the statements are true, it is to determine which conclusions are relevant in relation to the statements?

Statement. Some cakes are cream. All creams are sour.

- Conclusion i) There are some creams, cakes.
ii) All are sour cream.

Select from the following options,

- (A) only conclusions i is logical.
(B) The only conclusion ii is logical.
(C) either i or ii conclusion is rational.
(D) neither i nor ii conclusion is rational.
(E) i and ii both conclusions are rational.

- (A) D - (Alternative 4)
(B) B - (Alternative 2)
(C) A - (Alternative 1)
(D) C - (Alternative 3)



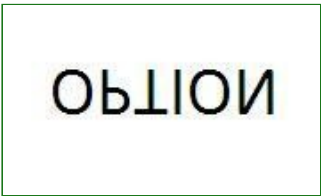

Question No.82

1.00

Bookmark

Choose the right water image of the given question from the given options.

OPTION

- (A)  - (Optional 3)
- (B)  - (Optional 1)
- (C)  - (Optional 4)
- (D)  - (Optional 2)

Question no.83

1.00

Bookmark

In a certain code language, if CROWD is written XILJC, how would CRAMP be written in the same code language?

- (A) XIWUR - (Alternative 1)
(B) XIXVS - (Optional 3)
(C) XIYUS - (Alternative 4)

(D) XIYWT - (Alternative 2)

Question no.84

1.00

Bookmark

P is the cousin of Q, whose father is P's mother's brother. Q How are mothers related to P mother?

- (A) **Sister in Law - (Optional 3)**
(B) Sister - (Alternative 2)
(C) SaaS - (Alternative 4)
(D) Mom - (Alternative 1)

Question no.85

1.00

Bookmark

Four of the following five are similar in a certain way, which create a group. Which one of these is not related to this group?

LNP, HJL, MOQ, SVY, VXZ

- (A) VXZ - (Optional 3)
(B) HJL - (Alternative 2)
(C) **SVY - (Optional 1)**
(D) LNP - (Alternative 4)

Question no.86

1.00

Bookmark

Compound interest and interest of simple interest received in two years on difference amount is 84 rupees, if the rate of interest is 4%, then calculate the amount invested. (In rupees)

- (A) **52,500 - (Optional 1)**
(B) 54,500 - (Optional 3)
(C) 55,500 - (Optional 4)
(D) 53,500 - (Optional 2)

Question No.87

1.00

Bookmark

A bulb producing company found 13% of the total product defective. If the total number of non-defective products is 5133, then the number of total defective products should be given.

- (A) 757 - (Alternative 2)
(B) **767 - (Alternative 3)**
(C) 777 - (Alternative 4)
(D) 747 - (Optional 1)

Question no.88

1.00

Bookmark

Aamir distributed 925 gifts among 4 children. The first part of the child is twice the portion of the other child, three times the size of the third child and four times the fourth child's share. Describe the number of total gifts received by the first and the second child.

- (A) 444 - (Optional 2)
(B) 555 - (Optional 3)
(C) 333 - (Optional 1)

(D) 666 - (Optional 4)

Question No.89

1.00

Bookmark

At the rate of a compound interest rate of 5 years, the original amount is tripled in five years, in how many years it will become 81 times the original amount?

- (A) 19 - (Optional 1)
(B) 22 - (Optional 4)
(C) 20 - (Optional 2)
(D) 21 - (Optional 3)

Question No.90

1.00

Bookmark

Vimal received 69 out of 80 marks in French, 92 out of 100 in English, 62 out of 70 in Spanish, and 47 out of 50 in Japanese. What was the total percentage achieved by him? (% In)

- (A) 70 - (Optional 1)
(B) 90 - (Optional 3)
(C) 80 - (Optional 2)
(D) 100 - (Optional 4)

Question No.91

1.00

Bookmark

The amount of Rs. 8,000 is given at an annual rate of 8% on ordinary interest. If the amount was withdrawn after 5 years and half of the total amount was invested in the stock market, then tell the amount remaining (in rupees)

- (A) 5,600 - (Optional 4)
(B) 5,300 - (Optional 1)
(C) 5,500 - (Optional 3)
(D) 5,400 - (Optional 2)

Question No.92

1.00

Bookmark

The entire area of the square piece of glass is 1600 cm^2 . Which is placed above a table. The width between the table and the glass piece is 9 cm. Tell the length of the table | (in cm)

- (A) 57 - (Optional 2)
(B) 59 - (Optional 4)
(C) 58 - (Optional 3)
(D) 56 - (Optional 1)

Question No.93

1.00

Bookmark

A person travels at the speed of 12kmph, 8kmph and 6kmph on the surface of an equilateral triangle. Find the average speed of his journey. (In Kmph)

- (A) 9 - (Optional 3)
(B) 8 - (Optional 2)
(C) 10 - (Optional 4)
(D) 7 - (Optional 1)

Question No.94

1.00

Bookmark

When a number is divided by 119, the remainder remains 8. When the same number is divided by 17, what will be the remainder?

- (A) 8 - (Optional 4)
(B) 7 - (Optional 3)
(C) 5 - (Optional 1)
(D) 6 - (Optional 2)

Question No.95

1.00

Bookmark

Find the value of x.

$$\sqrt{625} \div 25 + \sqrt{676} = 1 \times x$$

- (A) 29 - (Optional 3)
(B) 27 - (Optional 1)
(C) 30 - (Optional 4)
(D) 28 - (Alternative 2)

Question No.96

1.00

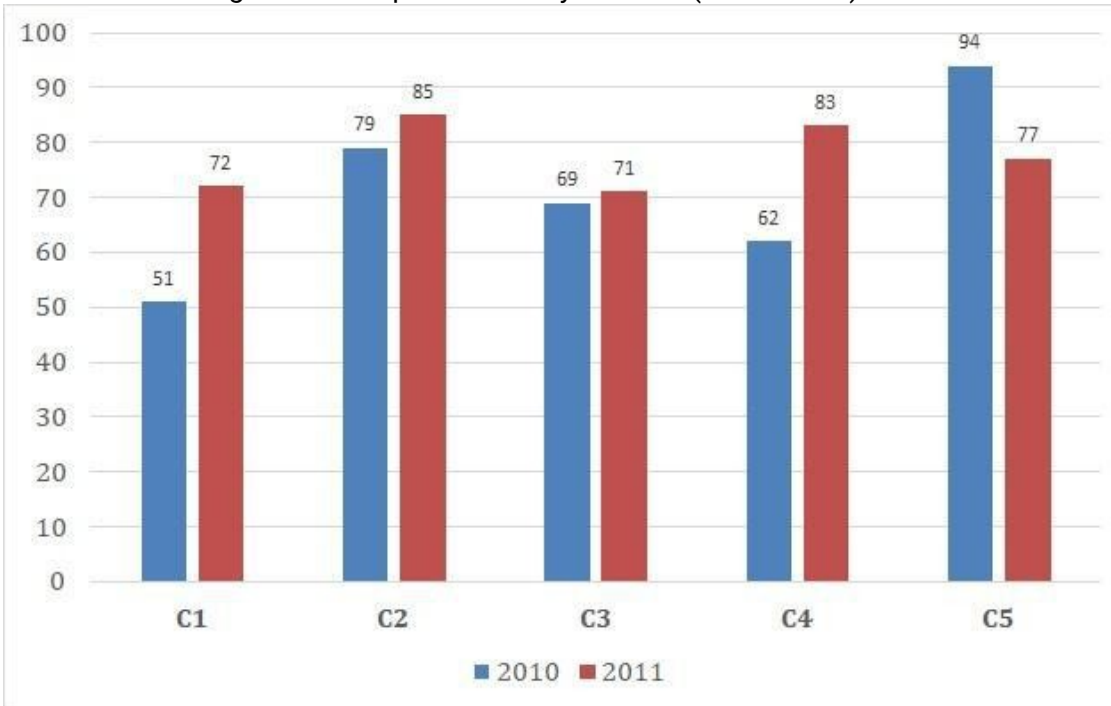
Bookmark

Instructions:

Study the graph of the following times and answer the question based on it?

The sale of books (in thousand) has been given in two consecutive years of 2010 and 2011 of five branches of a publishing company.

Find out the average of all companies in the year 2010 (in thousand)?



- (A) 70 - (Optional 1)
- (B) 72 - (Optional 3)
- (C) 73 - (Alternative 4)
- (D) 71 - (Alternative 2)

Question No.97

1.00

Bookmark

Sheila walks at the speed of her usual speed ($\frac{22}{23}$) and determines a certain distance in 6 minutes more than the normal speed. Calculate the normal time it takes in determining a certain distance? (in a minute)

- (A) 152 - (Optional 3)
- (B) 132 - (Optional 1)
- (C) 162 - (Optional 4)
- (D) 142 - (Alternative 2)

Question No.98

1.00

Bookmark

If a shopkeeper hikes the purchase price of an item by 48% and has a value of 48% on its sale, then know the total percentage gain or loss it will have?

- (A) 23.04% Loss - (Optional 4)
- (B) 22.84% Loss - (Optional 3)
- (C) 23.04% profit - (Optional 2)
- (D) 22.84% profit - (Optional 1)

Question No.99

1.00

Bookmark

Find the value of x.

$$\frac{2}{5}(x) + \frac{3}{10}(x) - \frac{3}{5}(x) = 551$$

- (A) 5510 - (Alternative 2)
(B) 5710 - (Optional 4)
(C) 5410 - (Optional 1)
(D) 5610 - (Optional 3)

Question No.100

1.00

Bookmark

The proportion of salaries of Hameed, Clement and Ganesh is 3: 5: 7, respectively, if Ganesh is getting Rs.908 more than Hameed. What is Clement's salary? (In rupees)

- (A) 1,135 - (Optional 4)
(B) 1,115 - (Alternative 2)
(C) 1,125 - (Optional 3)
(D) 1,105 - (Optional 1)

Question No.101

1.00

Bookmark

How can the 648 mobile phones be distributed in an evenly similar manner in the students present in the class?

- (A) 20 - (Optional 2)
(B) 21 - (Optional 3)
(C) 22 - (Optional 4)
(D) 19 - (Optional 1)

Question No.102

1.00

Bookmark

A train takes 59 seconds to cross the 204 m long bridge. If the same train takes 25 seconds to cross a sign board then know the length of the train (in meters)

- (A) 160 - (Optional 4)
(B) 140 - (Alternative 2)
(C) 130 - (Optional 1)
(D) 150 - (Optional 3)

Question No.103

1.00

Bookmark

Selling an item for Rs 1,120 will get 60% more loss than the profit obtained by selling the same item at Rs 1840 for a given price. Find the purchase price of that item? (In rupees)

- (A) 1,390 - (Optional 1)
(B) 1,690 - (Optional 4)
(C) 1,590 - (Optional 3)

(D) 1,490 - (Optional 2)

Question No.104

1.00

Bookmark

There is 633 male and 633 female employees in a support project of an English based company. The average productivity of all employees is 72 calls per day. 72 call attendants are provided daily by a male employee. What will be the average of the number of calls being added to the women staff daily?

- (A) 72 - (Alternative 2)
(B) 73 - (Optional 3)
(C) 71 - (Optional 1)
(D) 74 - (Optional 4)

Question No.105

1.00

Bookmark

Martin gave 13% of his salary to a working organization for blind people, 12% of his salary to orphanages, 14% for physically challenged people, and 16% of his salary. Grant to the institution. The remaining amount of salary deposited in the bank for a monthly expenditure of Rs 44100. Find the amount donated in the orphanage.

- (A) Rs.1,1,760 - (Optional 1)
(B) Rs.14,760 - (Optional 4)
(C) Rs.13,760 - (Optional 3)
(D) Rs.17,760 - (Optional 2)

Question No.106

1.00

Bookmark

If the radius of a circle becomes 21 times, then how much of its circumference will be the previous perimeter?

- (A) 21 - (Optional 2)
(B) 22 - (Optional 3)
(C) 20 - (Optional 1)
(D) 23 - (Optional 4)

Question No.107

1.00

Bookmark

Tell us the product of two numbers, whom LS 8357 and M1.

- (A) 8357 - (Optional 1)
(B) 8557 - (Optional 3)
(C) 8457 - (Optional 2)
(D) 8657 - (Optional 4)

Question No.108

1.00

Bookmark

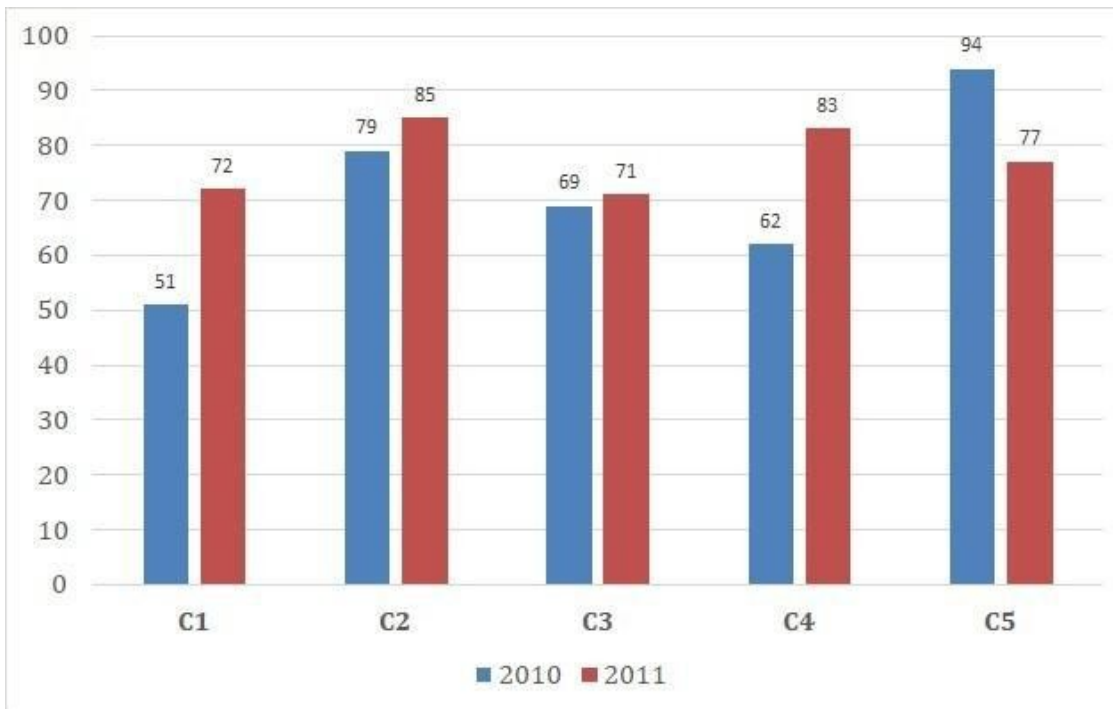
Instructions:

Study the graph of the following times and answer the question based on it?

The sale of books (in thousand) has been given in two consecutive years of 2010 and 2011 of five branches of a publishing company.

Find the ratio of total sales in the two years of branch C2 and the ratio of total sales in both years

of branch C4?



- (A) 145: 164 - (Optional 3)
(B) 163: 144 - (Optional 1)
(C) **164: 145 - (Optional 4)**
(D) 144: 163 - (Optional 2)

Question No.109

1.00

Bookmark

In the mixture of 98 liters, the ratio of milk and water is 3: 4. If this ratio is changed to 3: 5, then tell the amount of excess water (in liters) mixed in the mixture.

- (A) 15 - (Optional 2)
(B) 16 - (Optional 3)
(C) 17 - (Optional 4)
(D) **14 - (Optional 1)**

Question no.110

1.00

Bookmark

The station master decides that the length and breadth of the rectangular digital board are increased by 2% and respectively, 8% is reduced. Find out the total change in the area.

- (A) 5.24% increase - (Optional 1)
(B) **6.16% reduction - (Optional 2)**
(C) 8.24% reduction - (Optional 4)
(D) 7.16% increase - (Optional 3)

Question No.111

1.00

Bookmark

Simplify.

$$441^2 \times 84 \div 21^5 \times 1021 = ?$$

- (A) 4084 - (Optional 4)
(B) 4064 - (Alternative 2)
(C) 4054 - (Optional 1)
(D) 4074 - (Optional 3)

Question no.112

1.00

Bookmark

A person travels from the hostel to the college with a speed of 15 kmph from the bicycle and reaches a 6-minute delay. If he runs the speed of 20 kmph then he reaches 6 minutes earlier. Describe the distance between hostel and college. (In km)

- (A) 12 - (Optional 4)
(B) 11 - (Optional 3)
(C) 9 - (Optional 1)
(D) 10 - (Optional 2)

Question No.113

1.00

Bookmark

The average weight of 75 notebooks in a box is 7.5 kg. When a new notebook is placed in the box then the average is 7.6kg. Specify the weight of the new notebook. (In Kg)

- (A) 15.2 - (Optional 2)
(B) 15.4 - (Optional 4)
(C) 15.1 - (Optional 1)
(D) 15.3 - (Optional 3)

Question No.114

1.00

Bookmark

A shopkeeper sells a product in Rs.3,276 and earns 12.5% profit. Tell the amount that is equal to half of the purchase price of the product (in Rs.)

- (A) 1,356 - (Alternative 2)
(B) 1,456 - (Optional 3)
(C) 1,556 - (Optional 4)
(D) 1,256 - (Optional 1)

Question No.115

1.00

Bookmark

573! In the trailing Zeros, let us know.

- (A) 140 - (Optional 3)
(B) 130 - (Alternative 2)
(C) 120 - (Optional 1)

(D) 150 - (Optional 4)

Question no.116

1.00

Bookmark

Simplify.

$$17.35 + 15.32 + 17.36 - 26.48 = 3 \times ?$$

(A) 4.89 - (Optional 1)

(B) 5.79 - (Optional 4)

(C) 7.85 - (Optional 3)

(D) 6.85 - (Optional 2)

Question No.117

1.00

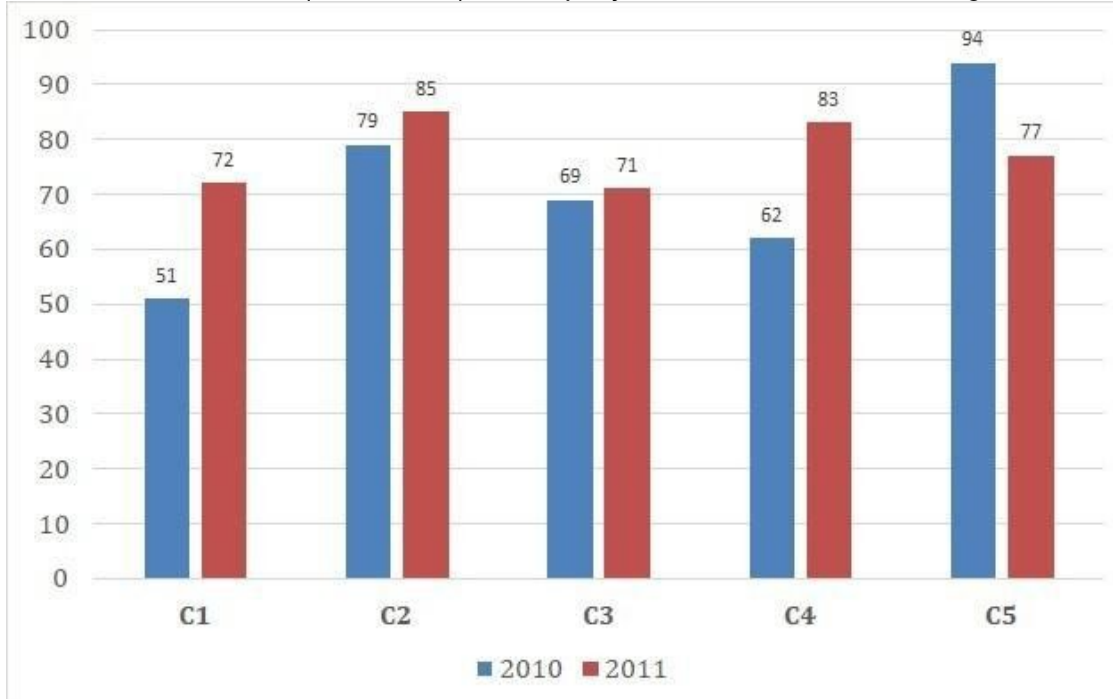
Bookmark

Instructions:

Study the graph of the following times and answer the question based on it?

The sale of books (in thousand) has been given in two consecutive years of 2010 and 2011 of five branches of a publishing company.

Find out the total sales (in thousand) of company branches C1, C3 and C5 together in two years?



(A) 424 - (Optional 2)

(B) 414 - (Optional 1)

(C) 434 - (Optional 3)

(D) 444 - (Optional 4)

Question no.118

1.00

Bookmark

What would be the height of the cuboid, 28, 3 cm, and the cuboid that is formed by making the cuboid? If the length of the cuboid is equal to the arm of the cube and the width of the cuboid is 14 cm. (in cm)

- (A) 58 - (Optional 3)
- (B) 59 - (Optional 4)
- (C) **56 - (Optional 1)**
- (D) 57 - (Optional 2)

Question No.119

1.00

Bookmark

In one box, three different types of old coins are in the ratio of 3: 5: 7, the value of old coins is Rs. 1, 5 and 10 rupees respectively. If the total cost of coins placed in the box is Rs 882 So, tell the number of old coins of 10 rupees.

- (A) **63 - (Alternative 2)**
- (B) 61 - (Optional 1)
- (C) 65 - (Optional 3)
- (D) 67 - (Optional 4)

Question No.120

1.00

Bookmark

A gift box has 10 bangles. The average weight of the first 4 bangles is 61gms and the average weight of the remaining 6 bangles is 62 gms. Tell the average weight of all bangles (in grams)

- (A) **61.6 - (Optional 3)**
- (B) 61.5 - (Optional 2)
- (C) 61.7 - (Optional 4)
- (D) 61.4 - (Optional 1)