

Roll No:

Registration No:

Name:

Date: 10-Jan-2019 **-2nd Shift**

Examination: Online Examination - SI

Section 1 - Online Examination

Question No.1

1.00

Bookmark

Which is the capital of Mizoram?

- (A) **Aizawl - (Alternative 1)**
(B) Gangtok - (Alternative 2)
(C) Raipur - (Alternative 4)
(D) Dispur - (Alternative 3)

Question No.2

1.00

Bookmark

Which of the following crop is not a Zaid crop?

- (A) **Mustard - (Alternative 4)**
(B) Watermelon - (Alternative 1)
(C) Pumpkin - (Alternative 3)
(D) Cucumber - (Alternative 2)

Question No.3

1.00

Bookmark

The Constitution of India describes India as a

- (A) Quasi-Federation State - (Alternative 3)
(B) Federation of Independent States - (Alternative 1)
(C) **Union of States - (Alternative 2)**
(D) Dominion of Free States - (Alternative 4)

Question No.4

1.00

Bookmark

The Vice-President is a member of

- (A) the Rajya Sabha - (Alternative 1)
(B) the Lok Sabha - (Alternative 2)
(C) **neither Lok Sadha nor Rajya Sabha - (Alternative 3)**
(D) both the Houses - (Alternative 4)

Question No.5

1.00

Bookmark

What is the formula for Pressure?

- (A) Mass/Area - (Alternative 3)
(B) **Force/Area - (Alternative 4)**
(C) Force/Mass - (Alternative 2)
(D) Force/Time - (Alternative 1)

Question No.6

1.00

Bookmark

Which of the following years was declared as the 'International Year of Water Cooperation' by The United Nations?

- (A) 2001 - (Alternative 1)
- (B) 2018 - (Alternative 4)
- (C) **2013 - (Alternative 3)**
- (D) 2009 - (Alternative 2)

Question No.7

1.00

Bookmark

What was the Royal emblem of the Rashtrakutas?

- (A) Tiger - (Alternative 3)
- (B) Elephant - (Alternative 4)
- (C) Lion - (Alternative 2)
- (D) **Golden Eagle - (Alternative 1)**

Question No.8

1.00

Bookmark

The process where by a liquid(water) changes into a gas(water vapour) is called

- (A) Precipitation - (Alternative 3)
- (B) **Evaporation - (Alternative 2)**
- (C) Sublimation - (Alternative 4)
- (D) Condensation - (Alternative 1)

Question No.9

1.00

Bookmark

What is the atomic number of Carbon?

- (A) **6 - (Alternative 2)**
- (B) 4 - (Alternative 1)
- (C) 5 - (Alternative 3)
- (D) 3 - (Alternative 4)

Question No.10

1.00

Bookmark

Who gave the slogan 'Freedom is my birth right and I Shall have it'?

- (A) **Bal Gangadhar Tilak - (Alternative 2)**
- (B) Bhagat Singh - (Alternative 4)
- (C) Subhas Chandra Bose - (Alternative 1)
- (D) Jawaharlal Nehru - (Alternative 3)

Question No.11

1.00

Bookmark

Which of the following Monuments is not built by Shah Jahan?

- (A) Taj Mahal - (Alternative 3)

- (B) Peacock Throne - (Alternative 4)
(C) Red Fort - (Alternative 1)
(D) **Panch Mahal - (Alternative 2)**

Question No.12

1.00

Bookmark

Who acted as the interim Prime Minister of India immediately on the death of Jawaharlal Nehru?

- (A) Indira Gandhi - (Alternative 2)
(B) T T Krishnamachari - (Alternative 1)
(C) Lal Bahadur Shastri - (Alternative 3)
(D) **Gulzarilal Nanda - (Alternative 4)**

Question No.13

1.00

Bookmark

Indian Cricket team played their first ever ODI against which one of the following teams?

- (A) South Africa - (Alternative 3)
(B) **England - (Alternative 1)**
(C) Australia - (Alternative 2)
(D) West Indies - (Alternative 4)

Question No.14

1.00

Bookmark

What is the expansion of "NPCI"?

- (A) Nominal Payments Corporation of India - (Alternative 3)
(B) National Public Corporation of India - (Alternative 4)
(C) **National Payments Corporation of India - (Alternative 1)**
(D) National Payment Corporation of Industries - (Alternative 2)

Question No.15

1.00

Bookmark

Which one of the following is a natural source of Acetic acid?

- (A) Orange - (Alternative 2)
(B) Lemon - (Alternative 4)
(C) **Vinegar - (Alternative 3)**
(D) Tamarind - (Alternative 1)

Question No.16

1.00

Bookmark

Warli Folk Painting is from which state of India?

- (A) Uttar Pradesh - (Alternative 3)
(B) Tamil Nadu - (Alternative 1)
(C) Jharkhand - (Alternative 2)
(D) **Maharashtra - (Alternative 4)**

Question No.17

1.00

Bookmark

Sardar Sarovar dam is located in

- (A) Nagaland - (Alternative 1)
- (B) West Bengal - (Alternative 4)
- (C) Tripura - (Alternative 3)
- (D) Gujarat - (Alternative 2)

Question No.18

1.00

Bookmark

What is the formula for Methane?

- (A) CH₄ - (Alternative 1)
- (B) MH₄ - (Alternative 3)
- (C) M₂H₄ - (Alternative 4)
- (D) C₂H₄ - (Alternative 2)

Question No.19

1.00

Bookmark

Which one of the following is the largest country by area in the world?

- (A) Cuba - (Alternative 1)
- (B) India - (Alternative 3)
- (C) Japan - (Alternative 2)
- (D) Russia - (Alternative 4)

Question No.20

1.00

Bookmark

Which one of the following states is the most densely populated state as per 2011 census?

- (A) Jharkhand - (Alternative 1)
- (B) Assam - (Alternative 4)
- (C) Maharashtra - (Alternative 2)
- (D) Bihar - (Alternative 3)

Question No.21

1.00

Bookmark

Where is Sanchi Stupa located?

- (A) Madhya Pradesh - (Alternative 2)
- (B) West Bengal - (Alternative 4)
- (C) Andhra Pradesh - (Alternative 1)
- (D) Gujarat - (Alternative 3)

Question No.22

1.00

Bookmark

Grand Slam Tournament is related to which among the following sports?

- (A) Rowing - (Alternative 2)
- (B) Chess - (Alternative 1)
- (C) Tennis - (Alternative 3)
- (D) Golf - (Alternative 4)

Question No.23

1.00

Bookmark

The substances which are added to the soil in the form of nutrients for the healthy growth of plants are called _____

- (A) Sowing - (Alternative 2)
- (B) Irrigation - (Alternative 3)
- (C) Ploughing - (Alternative 4)
- (D) **Fertilizers - (Alternative 1)**

Question No.24

1.00

Bookmark

What is the currency name of Brazil?

- (A) Brazilian ringgit - (Alternative 4)
- (B) **Brazilian real - (Alternative 2)**
- (C) Brazilian rand - (Alternative 3)
- (D) Brazilian peso - (Alternative 1)

Question No.25

1.00

Bookmark

Which is the capital of Kenya?

- (A) **Nairobi - (Alternative 2)**
- (B) Tripoli - (Alternative 4)
- (C) Maseru - (Alternative 3)
- (D) Astana - (Alternative 1)

Question No.26

1.00

Bookmark

What is the distance between the Moon and the Earth?

- (A) **3.84×10^5 km - (Alternative 3)**
- (B) 4.84×10^5 km - (Alternative 4)
- (C) 1.84×10^5 km - (Alternative 2)
- (D) 2.84×10^5 km - (Alternative 1)

Question No.27

1.00

Bookmark

What is the nickname of PT Usha?

- (A) **Payyoli Express - (Alternative 2)**
- (B) Flying woman - (Alternative 1)
- (C) The Wall - (Alternative 3)
- (D) Punisher - (Alternative 4)

Question No.28

1.00

Bookmark

In which of the following Continents Great Victoria Desert is situated?

- (A) Asia - (Alternative 4)

- (B) Europe - (Alternative 1)
- (C) Antarctica - (Alternative 2)
- (D) **Australia - (Alternative 3)**

Question No.29

1.00

Bookmark

Rajya Sabha is considered to be a Permanent House because

- (A) its members never retire - (Alternative 1)
- (B) **the House is never dissolved - (Alternative 2)**
- (C) one-fourth of its members retire after every 3 years - (Alternative 4)
- (D) it holds the supreme power - (Alternative 3)

Question No.30

1.00

Bookmark

Who is known as 'Modern Manu'?

- (A) GV Mavalankar - (Alternative 2)
- (B) Jawaharlal Nehru - (Alternative 3)
- (C) **B. R. Ambedkar - (Alternative 4)**
- (D) Rajendra Prasad - (Alternative 1)

Question No.31

1.00

Bookmark

When was the Third Round table Conference held?

- (A) 1920 - (Alternative 2)
- (B) **1932 - (Alternative 4)**
- (C) 1940 - (Alternative 1)
- (D) 1947 - (Alternative 3)

Question No.32

1.00

Bookmark

_____ is a group of silicate minerals that have perfect cleavage, so that they split easily into thin plates.

- (A) Gypsum - (Alternative 2)
- (B) Quartz - (Alternative 4)
- (C) **Mica - (Alternative 1)**
- (D) Feldspar - (Alternative 3)

Question No.33

1.00

Bookmark

Who is the CEO of NITI Aayog?

- (A) Dr.V.K. Paul- (Alternative 2)
- (B) **Amitabh Kant - (Alternative 1)**
- (C) V.K. Saraswat - (Alternative 3)
- (D) Ramesh Chand - (Alternative 4)

Question No.34

1.00

Bookmark

Which of the following is a popular folk dance of Himachal Pradesh?

- (A) Jawara - (Alternative 3)
- (B) Alkap - (Alternative 4)
- (C) Charba - (Alternative 1)
- (D) Matki - (Alternative 2)

Question No.35

1.00

Bookmark

The Federal Court of India was setup in the year_____

- (A) 1947 - (Alternative 3)
- (B) 1937 - (Alternative 2)
- (C) 1935 - (Alternative 1)
- (D) 1950 - (Alternative 4)

Question No.36

1.00

Bookmark

Open-ended and Close-ended Schemes are the terms used in _____

- (A) Mutual Funds - (Alternative 3)
- (B) Chit Companies - (Alternative 1)
- (C) NBFCs - (Alternative 4)
- (D) Insurance Companies - (Alternative 2)

Question No.37

1.00

Bookmark

Where was Valabhi University located?

- (A) Punjab - (Alternative 2)
- (B) Delhi - (Alternative 1)
- (C) Gujarat - (Alternative 3)
- (D) Bihar - (Alternative 4)

Question No.38

1.00

Bookmark

Who among the following can preside over a joint sitting of the two Houses of the Indian Parliament?

- (A) Chief Minister of any one of the states - (Alternative 1)
- (B) Prime Minister of India - (Alternative 2)
- (C) Speaker of the Lok Sabha - (Alternative 3)
- (D) Chairman of the Rajya Sabha - (Alternative 4)

Question No.39

1.00

Bookmark

What is the expansion of "SONAR"?

- (A) Sound Neutralization and Ranging - (Alternative 4)
- (B) Sound Object Navigation and Radiation - (Alternative 1)
- (C) Sound Navigation and Ranging - (Alternative 3)

(D) Sound Object Navigation and Ranging - (Alternative 2)

Question No.40

1.00

Bookmark

Which State comes under the Article 370 of the Constitution?

- (A) **Jammu and Kashmir - (Alternative 3)**
(B) Haryana - (Alternative 4)
(C) Mizoram - (Alternative 2)
(D) Arunachal Pradesh - (Alternative 1)

Question No.41

1.00

Bookmark

In which of the following countries Perth Stadium is located?

- (A) Bangladesh - (Alternative 3)
(B) **Australia - (Alternative 1)**
(C) South Africa - (Alternative 2)
(D) New Zealand - (Alternative 4)

Question No.42

1.00

Bookmark

The study of Inscriptions is called

- (A) Ecology - (Alternative 2)
(B) Aqualogy - (Alternative 4)
(C) Sociology - (Alternative 1)
(D) **Epigraphy - (Alternative 3)**

Question No.43

1.00

Bookmark

Where is the headquarters of "Multi Commodity Exchange" located?

- (A) **Mumbai - (Alternative 3)**
(B) Chennai - (Alternative 4)
(C) New Delhi - (Alternative 1)
(D) Kolkata - (Alternative 2)

Question No.44

1.00

Bookmark

Pench National Park is situated in _____

- (A) Meghalaya - (Alternative 2)
(B) **Madhya Pradesh - (Alternative 1)**
(C) Uttarakhand - (Alternative 4)
(D) Telangana - (Alternative 3)

Question No.45

1.00

Bookmark

The President of India is elected by

- (A) The People of India directly - (Alternative 1)

- (B) The Union Cabinet - (Alternative 4)
(C) **Indirect election by electoral college - (Alternative 3)**
(D) The Lok Sabha and the Rajya Sabha at a joint sitting - (Alternative 2)

Question No.46

1.00

Bookmark

C A Bhavani Devi is associated with which game/sport?

- (A) Boxing - (Alternative 2)
(B) **Fencing - (Alternative 4)**
(C) Wrestling - (Alternative 1)
(D) Cricket - (Alternative 3)

Question No.47

1.00

Bookmark

The members of the Rajya Sabha are elected for the period of

- (A) one years - (Alternative 3)
(B) five years - (Alternative 4)
(C) **six years - (Alternative 2)**
(D) four years - (Alternative 1)

Question No.48

1.00

Bookmark

Losar festival is celebrated by which of the following religions?

- (A) Sikhism - (Alternative 4)
(B) **Buddhism - (Alternative 1)**
(C) Jainism - (Alternative 2)
(D) Hinduism - (Alternative 3)

Question No.49

1.00

Bookmark

The process by which green plants make their own food from carbon-dioxide and water in the presence of sunlight and chlorophyll is called _____.

- (A) Anaerobic Respiration - (Alternative 2)
(B) Transpiration - (Alternative 4)
(C) **Photosynthesis - (Alternative 3)**
(D) Respiration - (Alternative 1)

Question No.50

1.00

Bookmark

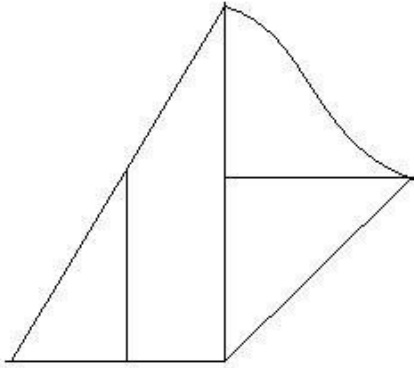
Who topped the Forbes Highest-Paid Female Athletes 2018 list?

- (A) **Serena Williams - (Alternative 3)**
(B) Venus Williams - (Alternative 2)
(C) P V Sindhu - (Alternative 1)
(D) Caroline Wozniacki - (Alternative 4)

Question No.51

1.00

How many straight lines are there in the given figure?



- (A) 15 - (Alternative 1)
 (B) 12 - (Alternative 4)
 (C) 8 - (Alternative 3)
 (D) 10 - (Alternative 2)

Question No.52

1.00

Bookmark

In this question, a statement is given followed by two conclusions numbered i and ii. You have to assume everything in the statement to be true, then consider the two conclusions together and decide which of them logically follows beyond a reasonable doubt from the information given in the statement.

Statement: "The MT pen costs Rs.25 per piece", read a board in a stationery shop.

Conclusion:

- i) The cost of 5 MT pen is Rs. 125.
 ii) The cost of the pen is very high

Choose the appropriate one from the following options

- (A) Only conclusion i follows
 (B) Only conclusion ii follows
 (C) Either i or ii follows
 (D) Neither i nor ii follows and
 (E) Both i and ii follow

- (A) D - (Alternative 3)
 (B) B - (Alternative 2)
 (C) A - (Alternative 1)
 (D) E - (Alternative 4)

Question No.53

1.00

Bookmark

Read the given information carefully and answer the questions that follow.

Eight friends P, Q, R, S, T, U, V and W sit around a circular table facing centre(not necessarily in the same order). Among them, there are 3 males and 5 females. No two males sit together.

- i) P sits opposite to Q who is a male.
 ii) T sits between a male and a female.
 iii) V sits fourth to the right of U who sits third to the left of P.
 iv) S sits immediately next to his friend P and opposite to W.
 v) U is not the neighbour of T.

Which of the following statements is true?

- (A) **S and Q are males - (Alternative 2)**
(B) The gender of T cannot be determined - (Alternative 1)
(C) W is not the neighbour of Q - (Alternative 3)
(D) There is only one person between T and S - (Alternative 4)

Question No.54

1.00

Bookmark

In this question, three statements are given followed by three conclusions. You have to assume everything in the statement to be true, then consider the given conclusions together and decide which of them logically follows beyond a reasonable doubt from the information given in the statements.

Statements: All cats are rats. All rats are dogs. Some dogs are animals.

Conclusions:

- i) Some cats are dogs
ii) All dogs are rats
iii) All animals are dogs

- (A) Only ii) and iii) - (Alternative 3)
(B) None follows - (Alternative 4)
(C) **Only i) - (Alternative 1)**
(D) Only i) and iii) - (Alternative 2)

Question No.55

1.00

Bookmark

In this question, relationship between different elements is shown in the statement. This statement is followed by two conclusions:

Statements: $S \leq L < U > M > B > E \geq R$

Conclusion:

- i) $S > M$
ii) $L > E$

Choose the appropriate one from the following options

- (A) Only conclusion i follows.
(B) Only conclusion ii follows.
(C) Either conclusion i or ii follows.
(D) Neither conclusion i nor ii follows.
(E) Both conclusion i and ii follow.
(A) B - (Alternative 2)
(B) C - (Alternative 3)
(C) **D - (Alternative 4)**
(D) A - (Alternative 1)

Question No.56

1.00

Bookmark

A is the grandmother of D who is the daughter of E. C is the brother of B whose sister is E. How is

D related to C?

- (A) Niece - (Alternative 3)
- (B) Daughter - (Alternative 4)
- (C) Sister - (Alternative 1)
- (D) Cousin - (Alternative 2)

Question No.57

1.00

Bookmark

Find the next number in the series.

7, 4, 11, 15, 26, ?

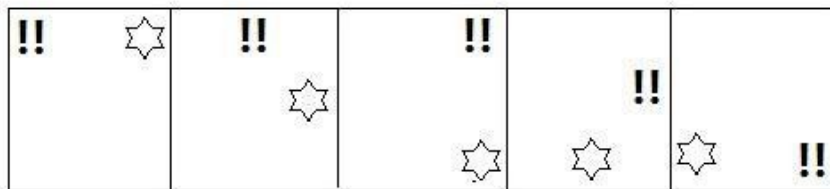
- (A) 78 - (Alternative 4)
- (B) 52 - (Alternative 3)
- (C) 48 - (Alternative 1)
- (D) 41 - (Alternative 2)

Question No.58

1.00

Bookmark

Which one of the alternative will be the next figure from the given alternatives for the given series?



(A)



- (Alternative 1)

(B)



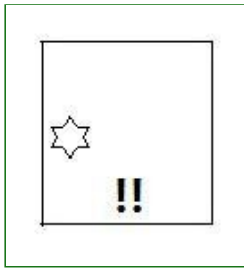
- (Alternative 4)

(C)



- (Alternative 3)

(D)



- (Alternative 2)

Question No.59

1.00

Bookmark

Read the following statements and answer the questions based on them

A@B means A is the mother of B

A#B means A is the father of B

A\$B means A is the wife of B

A%B means A is the husband of B

Which of the following shows that 'O is the daughter-in-law of M'?

- (A) M%N@O - (Alternative 4)
- (B) M#N@O - (Alternative 1)
- (C) M@N%O - (Alternative 3)
- (D) M@N\$O - (Alternative 2)

Question No.60

1.00

Bookmark

In a certain code language, if DROWSE is coded as HVZRUG, then how is CATNAP coded in that language?

- (A) SDQVDF - (Alternative 4)
- (B) SFQWFE - (Alternative 1)
- (C) SDQWDF - (Alternative 3)
- (D) SEQWFE - (Alternative 2)



Question No.61

1.00

Bookmark

If a mirror is placed on the shaded line, then which of the following options is the right image of the given figure?



- (A)  - (Alternative 2)
- (B)  - (Alternative 3)
- (C)

POJAND - (Alternative 1)

(D)

POJAND - (Alternative 4)

Question No.62

1.00

Bookmark

Read the given information carefully and answer the questions that follow.

Eight friends P, Q, R, S, T, U, V and W sit around a circular table facing centre(not necessarily in the same order). Among them, there are 3 males and 5 females. No two males sit together.

- i) P sits opposite to Q who is a male.
- ii) T sits between a male and a female.
- iii) V sits fourth to the right of U who sits third to the left of P.
- iv) S sits immediately next to his friend P and opposite to W.
- v) U is not the neighbour of T.

Which of the following pairs are males?

- (A) **QS - (Alternative 2)**
- (B) SR - (Alternative 4)
- (C) QT - (Alternative 1)
- (D) TP - (Alternative 3)

Question No.63

1.00

Bookmark

Pointing to a photograph of a boy, a man said to his wife, "He is the only brother of daughter of paternal grandfather of your son." Who is the boy in the photograph?

- (A) **Man himself - (Alternative 4)**
- (B) Man's son - (Alternative 2)
- (C) Man's brother - (Alternative 3)
- (D) Man's father - (Alternative 1)

Question No.64

1.00

Bookmark

In a certain code language, if MUSCLE is coded as NFHXOV, then how is SLUMBER coded in that language?

- (A) TMVNFCS - (Alternative 4)
- (B) HOFYNVI - (Alternative 2)
- (C) **HOFNYVI - (Alternative 1)**
- (D) TMVNCFS - (Alternative 3)

Question No.65

1.00

Bookmark

Read the given information carefully and answer the questions that follow.

Eight friends P, Q, R, S, T, U, V and W sit around a circular table facing centre(not necessarily in the same order). Among them, there are 3 males and 5 females. No two males sit together.

- i) P sits opposite to Q who is a male.

- ii) T sits between a male and a female.
- iii) V sits fourth to the right of U who sits third to the left of P.
- iv) S sits immediately next to his friend P and opposite to W.
- v) U is not the neighbour of T.

Who sits exactly between P and R?

- (A) V - (Alternative 1)
- (B) Q - (Alternative 2)
- (C) U - (Alternative 4)
- (D) S - (Alternative 3)

Question No.66

1.00

Bookmark

In this question, three statements showing relationship have been given, which are followed by three conclusions i, ii and iii. Assuming that the given statements are true, find out which conclusion(s) is/are definitely true.

Statements: $S = L > I > N$; $G > B = A < D$; $N < E = M < G$

Conclusions:

- i) $S > N$
- ii) $L > M$
- iii) $L \leq M$
- (A) Only i) and either ii) or iii) - (Alternative 4)
- (B) Only i) and ii) - (Alternative 2)
- (C) Only iii) - (Alternative 3)
- (D) Only i) and iii) - (Alternative 1)

Question No.67

1.00

Bookmark

In this question, two statements are given followed by two conclusions numbered i and ii. You have to assume everything in the statements to be true, then consider the two conclusions together and decide which of them logically follows beyond a reasonable doubt from the information given in the statements.

Statements: Some nibs are pens. All pens are spoons.

Conclusions:

- i) Some spoons are nibs.
- ii) All spoons are pens.

Choose the appropriate one from the following options

- (A) Only conclusion i follows
- (B) Only conclusion ii follows
- (C) Either i or ii follows
- (D) Neither i nor ii follows and
- (E) Both i and ii follow
- (A) D - (Alternative 4)
- (B) B - (Alternative 2)
- (C) A - (Alternative 1)
- (D) C - (Alternative 3)

Question No.68

1.00

Bookmark

Four of the following five are alike in a certain way and so form a group. Which is the one that does not belong to that group?

GEC, MKI, WUS, ZCF, LJH

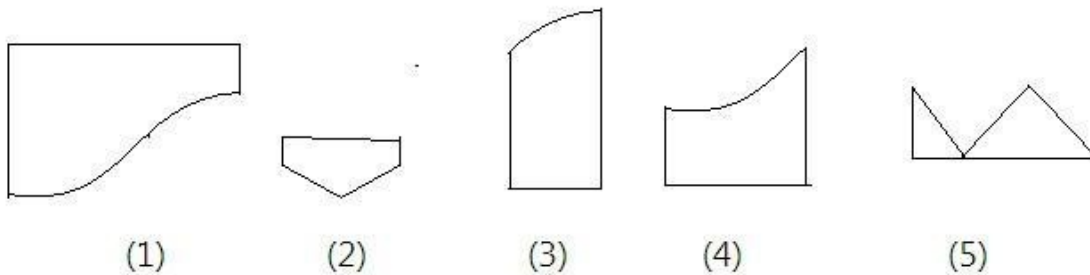
- (A) GEC - (Alternative 2)
 (B) ZCF - (Alternative 4)
 (C) MKI - (Alternative 3)
 (D) LJH - (Alternative 1)

Question No.69

1.00

Bookmark

Select the correct alternative from the following options which can form a complete square (3 out of 5 images given below) :



- (A) 1,3,4 - (Alternative 1)
 (B) 2,4,5 - (Alternative 3)
 (C) 1,3,5 - (Alternative 4)
 (D) 2,3,4 - (Alternative 2)

Question No.70

1.00

Bookmark

In this question, a passage is given followed by a statement. Read the passage carefully and judge the statement based on the given passage.

Major fire broke out at Patil Estate slum in Shivajinagar on Wednesday afternoon. As many as 40 fire tenders were rushed at the spot to douse the fire. Even after three hours, the fire could not be completely brought under control. The cause of fire could not be ascertained, though it spread due to LPG gas cylinder explosions.

Thousands of houses came crumbling down as the fire spread from one cramped lane space to another. According to fire brigade officials, the fire first broke out in lane number 3 of the slum area and then spread to other parts. Officials said that there were no casualties. Traffic on the Wakdewadi bridge heading from Khadki towards Pune railway station was stopped and diverted back to Khadki as fire tenders were parked on the bridge.

Statement: The fire spread due to the explosion of LPG gas cylinder.

Choose the appropriate one from the following options

- A -The statement is definitely true.
 B -The statement is probably true.
 C -The statement is cannot be determined.
 D -The statement is definitely false.

- (A) C - (Alternative 3)

- (B) A - (Alternative 1)
(C) D - (Alternative 4)
(D) B - (Alternative 2)

Question No.71

1.00

Bookmark

Replace the question mark with an option that follows the same logic applied in the first pair

BY:CZ::LQ: ??

- (A) MR - (Alternative 3)
(B) MS - (Alternative 2)
(C) NS - (Alternative 1)
(D) NR - (Alternative 4)

Question No.72

1.00

Bookmark

Find the next number in the series.

21, 23, 43, 133, 527, ?

- (A) 2103 - (Alternative 4)
(B) 2641 - (Alternative 1)
(C) 2806 - (Alternative 2)
(D) 2108 - (Alternative 3)

Question No.73

1.00

Bookmark

Replace the question mark with an option that follows the same logic applied in the first pair

1311:6::4222: ??

- (A) 12 - (Alternative 1)
(B) 10 - (Alternative 2)
(C) 14 - (Alternative 3)
(D) 8 - (Alternative 4)

Question No.74

1.00

Bookmark

Four of the following five are alike in a certain way and so form a group. Which is the one that does not belong to that group?

Y, O, J, E, H

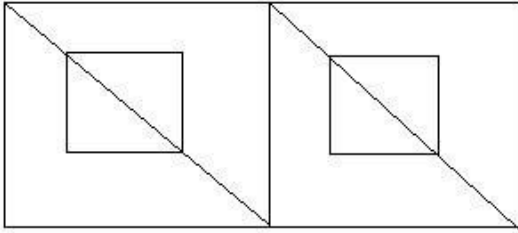
- (A) Y - (Alternative 4)
(B) H - (Alternative 1)
(C) J - (Alternative 2)
(D) O - (Alternative 3)

Question No.75

1.00

Bookmark

How many Right angled triangles can be formed from the given figure?



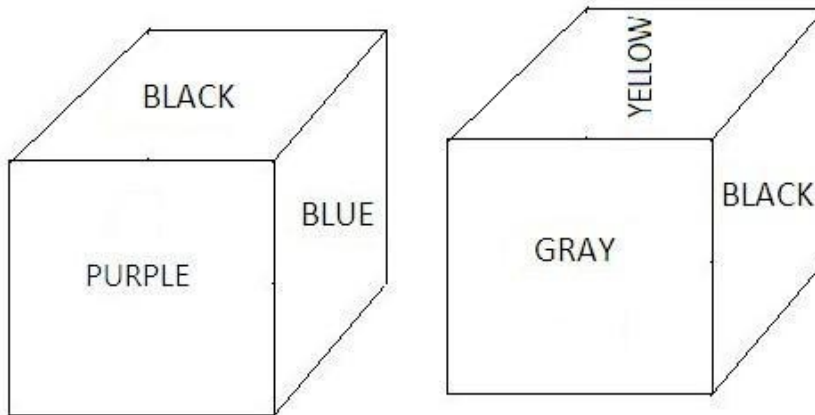
- (A) 8 - (Alternative 2)
- (B) 16 - (Alternative 4)
- (C) 12 - (Alternative 3)
- (D) 10 - (Alternative 1)

Question No.76

1.00

Bookmark

Each face of the dice is painted with Purple, Red, Yellow, Blue, Gray and Black as shown in the given figure. What colour is painted on the face opposite to Black colour?



- (A) RED - (Alternative 3)
- (B) YELLOW - (Alternative 1)
- (C) BLUE - (Alternative 2)
- (D) PURPLE - (Alternative 4)

Question No.77

1.00

Bookmark

Replace the question mark with an option that follows the same logic applied in the first pair

Radiology:Radiations::Seismology: ??

- (A) Earthquake - (Alternative 4)
- (B) Famine - (Alternative 3)
- (C) Weather - (Alternative 1)
- (D) Rainfall - (Alternative 2)

Question No.78

1.00

Bookmark

In this question, a passage is given followed by a statement. Read the passage carefully and judge

the statement based on the given passage.

Major fire broke out at Patil Estate slum in Shivajinagar on Wednesday afternoon. As many as 40 fire tenders were rushed at the spot to douse the fire. Even after three hours, the fire could not be completely brought under control. The cause of fire could not be ascertained, though it spread due to LPG gas cylinder explosions.

Thousands of houses came crumbling down as the fire spread from one cramped lane space to another. According to fire brigade officials, the fire first broke out in lane number 3 of the slum area and then spread to other parts. Officials said that there were no casualties, although they are assessing the damage caused. Traffic on the Wakdewadi bridge heading from Khadki towards Pune railway station was stopped and diverted back to Khadki as fire tenders were parked on the bridge.

Statement: Many people died out of this fire accident.

Choose the appropriate one from the following options

A -The statement is definitely true.

B -The statement is probably true.

C -The statement is cannot be determined.

D -The statement is definitely false.

(A) C - (Alternative 3)

(B) B - (Alternative 2)

(C) A - (Alternative 1)

(D) D - (Alternative 4)

Question No.79

1.00

Bookmark

Choose the correct water image of the given question from the given options.

MIRROR

(A) **RORIR** - (Alternative 1)

(B) **MIBBOB** - (Alternative 2)

(C) **RIORIR** - (Alternative 3)

(D) **MIBBOB** - (Alternative 4)

Question No.80

1.00

Bookmark

Find the next number in the series.

4, 3, 4, 9, 32, ?

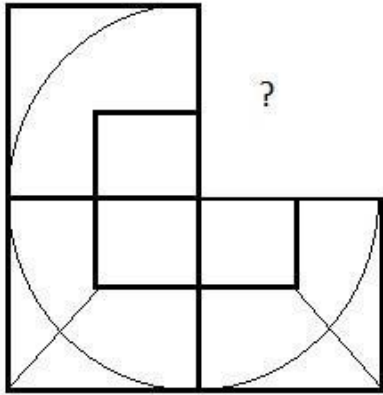
- (A) 124 - (Alternative 1)
- (B) 155 - (Alternative 3)
- (C) 96 - (Alternative 2)
- (D) 128 - (Alternative 4)

Question No.81

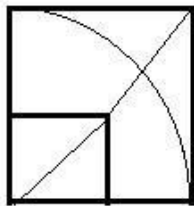
1.00

Bookmark

Choose the correct alternative which will complete the image pattern of the given image.

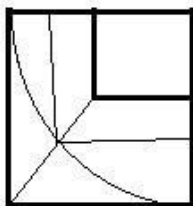


(A)



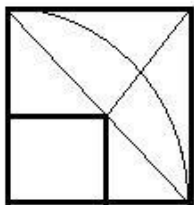
- (Alternative 4)

(B)



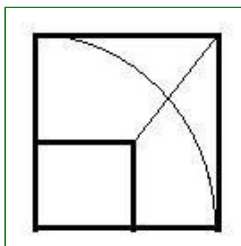
- (Alternative 2)

(C)



- (Alternative 1)

(D)



- (Alternative 3)

Question No.82

1.00

Bookmark

Replace the question mark with an option that follows the same logic applied in the first pair

Umpire:Playground::Sailor: ??

- (A) Voyage - (Alternative 2)
- (B) Aeroplane - (Alternative 4)
- (C) Ship - (Alternative 3)
- (D) Jet - (Alternative 1)

Question No.83

1.00

Bookmark

Find the next number in the series.

423, 407, 434, 418, 445, ?

- (A) 439 - (Alternative 4)
- (B) 461 - (Alternative 3)
- (C) 429 - (Alternative 1)
- (D) 472 - (Alternative 2)

Question No.84

1.00

Bookmark

Four of the following five are alike in a certain way and so form a group. Which is the one that does not belong to that group?

Millimeter, Kilogram, Centimeter, Decimeter, Meter

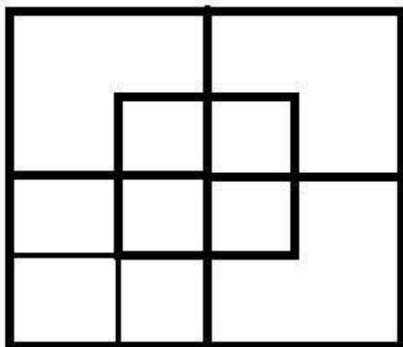
- (A) Millimeter - (Alternative 4)
- (B) Centimeter - (Alternative 2)
- (C) Decimeter - (Alternative 1)
- (D) Kilogram - (Alternative 3)

Question No.85

1.00

Bookmark

How many squares are there in the given figure?



- (A) 12 - (Alternative 4)
- (B) 13 - (Alternative 1)
- (C) 10 - (Alternative 3)
- (D) 15 - (Alternative 2)

Question No.86

1.00

A gift box consists of 10 rings. The average weight of the first 4 rings is 45 grams and the average weight of the remaining 6 rings is 46 grams. Find the average weight of the total rings.(in grams)

- (A) 45.6 - (Alternative 3)
 (B) 45.8 - (Alternative 4)
 (C) 45.2 - (Alternative 1)
 (D) 45.4 - (Alternative 2)

Question No.87

1.00

A bulb producing company found that 11% of the overall product is defective. If the number of non defective products is 7031 then find the number of defective products.

- (A) 869 - (Alternative 3)
 (B) 859 - (Alternative 2)
 (C) 849 - (Alternative 1)
 (D) 879 - (Alternative 4)

Question No.88

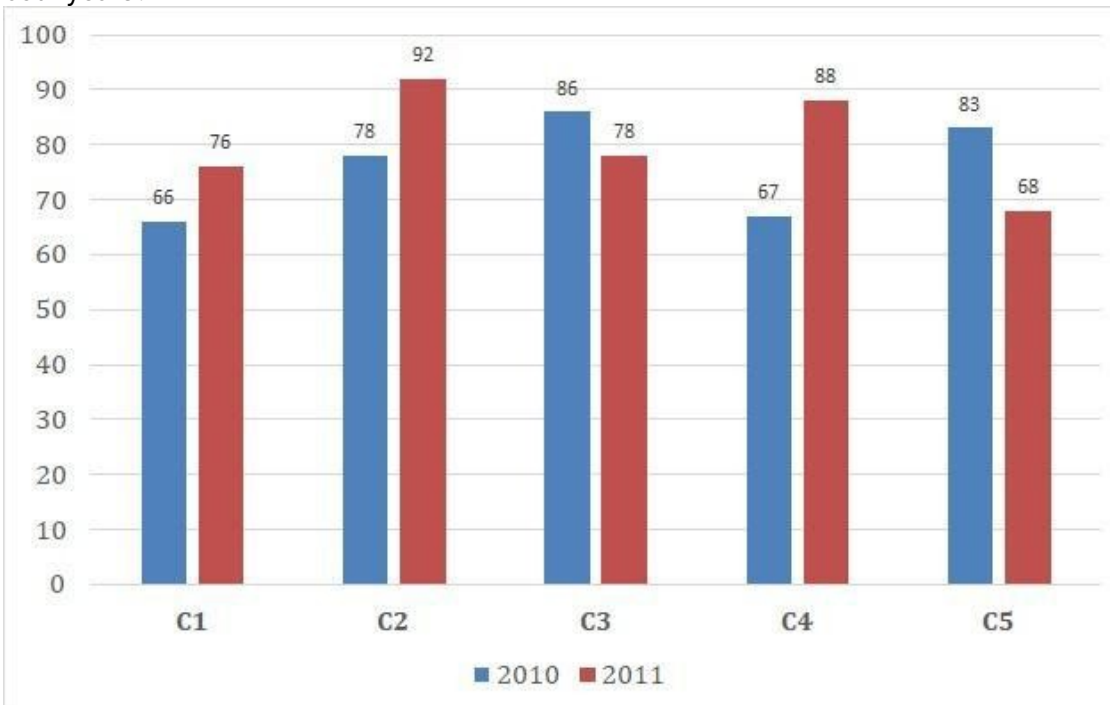
1.00

Directions:

Study the following bar graph and answer the question that follows:

Sales of books (in thousands) from 5 branches (C1,C2,C3,C4&C5) of a publishing company for the two successive years 2010 and 2011.

What is the ratio of the total sales of branch C2 for both years to the total sales of branch C4 for both years?



- (A) 35:32 - (Alternative 3)
 (B) 36:33 - (Alternative 2)
 (C) 34:31 - (Alternative 4)
 (D) 31:34 - (Alternative 1)

Question No.89

1.00

Bookmark

A Person travels a Equilateral triangular area with the speed of 25kmph, 75kmph and 150kmph along the planes of the triangular field. Find the average speed of the entire journey.

- (A) 60kmph - (Alternative 1)
- (B) 35kmph - (Alternative 4)
- (C) 70kmph - (Alternative 3)
- (D) **50kmph - (Alternative 2)**

Question No.90

1.00

Bookmark

The amount doubles itself under Compound interest in 3 years. In how many years will it become 2048 times of it?

- (A) **33 Years - (Alternative 2)**
- (B) 35 Years - (Alternative 3)
- (C) 37 Years - (Alternative 4)
- (D) 31 Years - (Alternative 1)

Question No.91

1.00

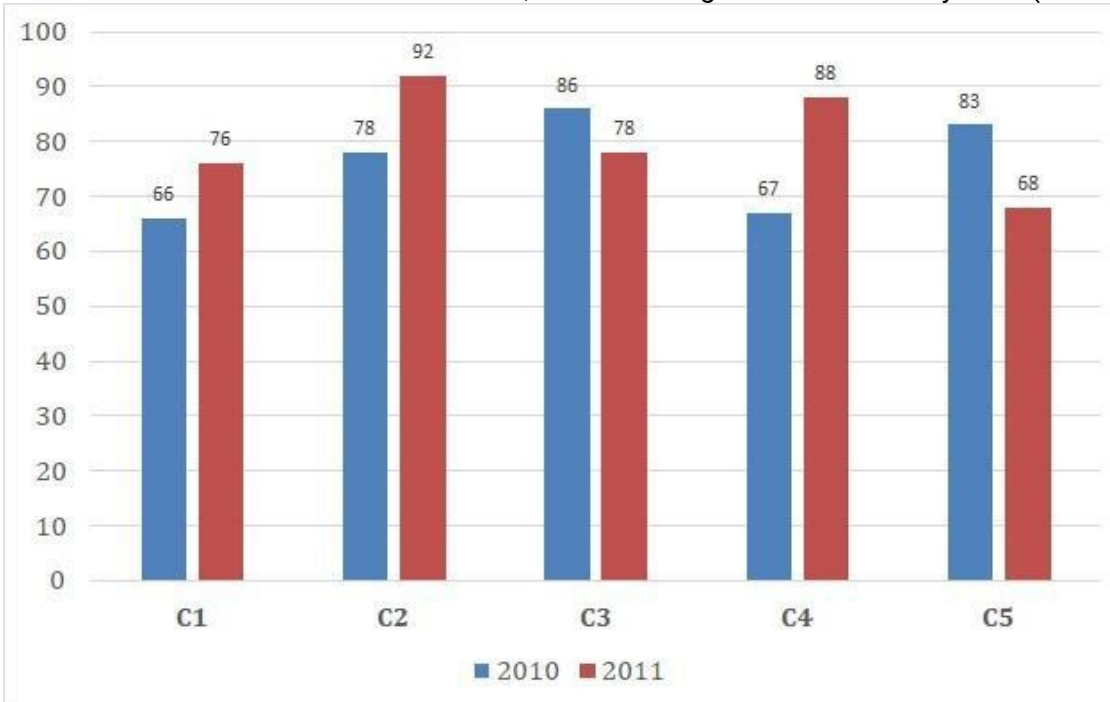
Bookmark

Directions:

Study the following bar graph and answer the question that follows:

Sales of books (in thousands) from 5 branches (C1,C2,C3,C4&C5) of a publishing company for the two successive years 2010 and 2011.

What is the total sales in the branches C1, C3 and C5 together for both the years? (in thousands)



- (A) 454 - (Alternative 2)
- (B) **457 - (Alternative 3)**
- (C) 455 - (Alternative 1)
- (D) 456 - (Alternative 4)

Question No.92

1.00

Bookmark

Simplify:

$$864 \div \left\{ \frac{3}{4} \left[\frac{16}{15} \right] - \frac{2}{3} \right\} = ?$$

- (A) 8640 - (Alternative 4)
 (B) 8460 - (Alternative 3)
 (C) 6480 - (Alternative 1)
 (D) 6840 - (Alternative 2)

Question No.93

1.00

Bookmark

Sheela walks a certain distance at $(13/14)$ th of the usual speed and takes 8 minutes more than the usual time. Find the usual time taken.

- (A) 68 mins - (Alternative 3)
 (B) 114 mins - (Alternative 4)
 (C) 104 mins - (Alternative 2)
 (D) 96 mins - (Alternative 1)

Question No.94

1.00

Bookmark

Simplify:

$$\frac{1}{16} \div \frac{1}{16} \div \frac{1}{16} \div \frac{1}{16} \div \frac{1}{16} = ?$$

- (A) 5096 - (Alternative 4)
 (B) 2096 - (Alternative 1)
 (C) 4096 - (Alternative 2)
 (D) 3096 - (Alternative 3)

Question No.95

1.00

Bookmark

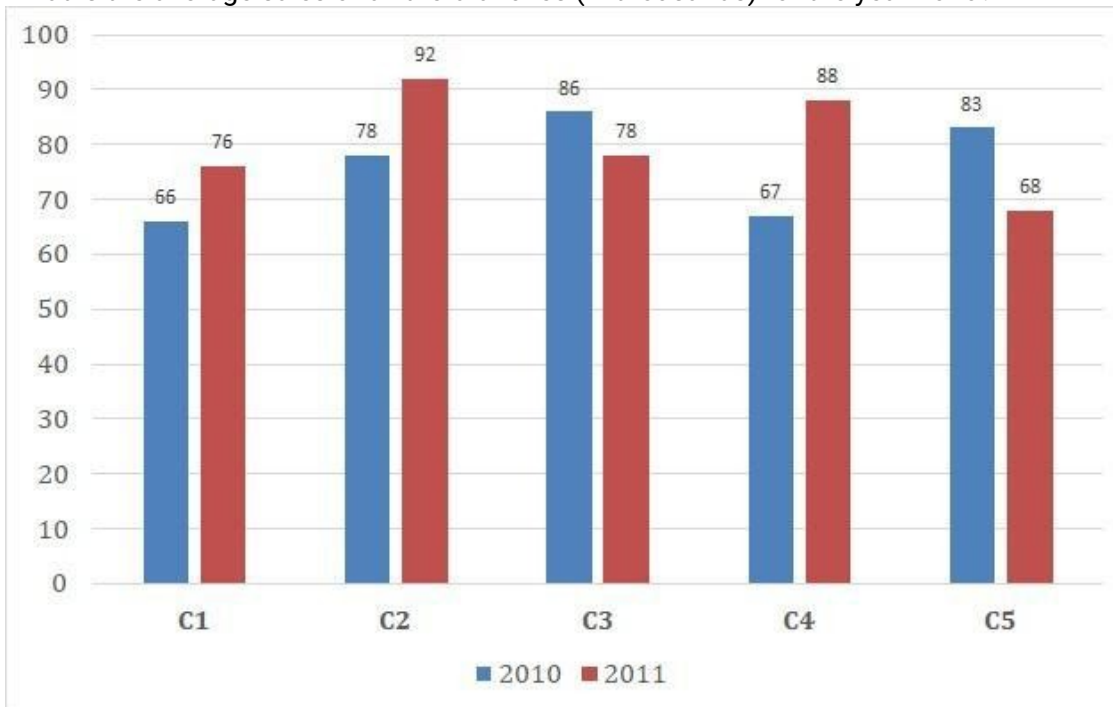
Directions:

Study the following bar graph and answer the question that follows:

Sales of books (in thousands) from 5 branches (C1,C2,C3,C4&C5) of a publishing company for the

two successive years 2010 and 2011.

What is the average sales of all the branches (in thousands) for the year 2010?



- (A) 74 - (Alternative 1)
(B) 78 - (Alternative 3)
(C) 72 - (Alternative 4)
(D) 76 - (Alternative 2)

Question No.96

1.00

Bookmark

When the article sold at the rate of Rs.3753 earned a profit of 11% more than that of the loss incurred when the same article sold at the rate of Rs.1432. Find the Cost price of the article.

- (A) Rs.2325 - (Alternative 3)
(B) Rs.2532 - (Alternative 1)
(C) Rs.2523 - (Alternative 4)
(D) Rs.2352 - (Alternative 2)

Question No.97

1.00

Bookmark

Simplify:

$$\sqrt{24.01} + \sqrt{90.25} + 9.5 = ?$$

- (A) 23.3 - (Alternative 4)
(B) 23.7 - (Alternative 2)
(C) 23.9 - (Alternative 3)
(D) 23.5 - (Alternative 1)

Question No.98

1.00

Bookmark

Find the product of two numbers, whose LCM is 120 and HCF is 13.

- (A) **1560 - (Alternative 1)**
(B) 1880 - (Alternative 3)
(C) 1660 - (Alternative 2)
(D) 1220 - (Alternative 4)

Question No.99

1.00

Bookmark

Total area of the square Glass Piece is 1024 cm^2 , which is placed on the top of a table. The width between the edge of the table and the glass piece is 9 cm wide. Find the length of the table.

- (A) 48 cm - (Alternative 4)
(B) 46 cm - (Alternative 2)
(C) **50 cm - (Alternative 3)**
(D) 45 cm - (Alternative 1)

Question No.100

1.00

Bookmark

A Box contains three different types of old coins in the ratio 8:7:6, the values of old coins are 1 rupee, 5 rupees and 10 rupees respectively. If the total value of the coins in the box is Rs.1133, find the number of coins values 5 rupees.

- (A) 66 - (Alternative 1)
(B) 99 - (Alternative 4)
(C) **77 - (Alternative 2)**
(D) 88 - (Alternative 3)

Question No.101

1.00

Bookmark

The salary ratio of Hakeem, Christo and Ganesh is 3:5:7, if Ganesh is getting Rs.684 more than Hakeem. What is the salary of Christo?(in Rs.)

- (A) 845 - (Alternative 3)
(B) 825 - (Alternative 1)
(C) **855 - (Alternative 4)**
(D) 835 - (Alternative 2)

Question No.102

1.00

Bookmark

The average weight of 109 Notebook in a box is 10.9 kg. When a new Notebook is added to the box the average goes to 11 kg. Find the weight of the new Notebook.

- (A) 22.3 kg - (Alternative 2)
(B) 22.7 kg - (Alternative 4)
(C) **21.9 kg - (Alternative 1)**
(D) 22.5 kg - (Alternative 3)

Question No.103

1.00

Bookmark

Vimal obtained 76 marks out of 80 in French, 94 marks out of 100 in English, 50 out of 70 in Spanish and 47 out of 50 in Japanese. What was the overall percentage obtained by him?

- (A) 91% - (Alternative 4)
- (B) 89% - (Alternative 3)
- (C) 87% - (Alternative 1)
- (D) 88% - (Alternative 2)

Question No.104

1.00

Bookmark

A sum of Rs.6400 invested under simple interest at rate of 8% p.a. If the amount after 5 years is withdrawn and half of the total amount is invested in Share market. Find the remaining amount.(in Rs)

- (A) Rs.4740 - (Alternative 2)
- (B) Rs.4840 - (Alternative 3)
- (C) Rs.4480 - (Alternative 4)
- (D) Rs.4640 - (Alternative 1)

Question No.105

1.00

Bookmark

A person cycles from hostel to college at a speed of 75 kmph and reaches 15 minutes late. If he cycles at a speed of 150 kmph and he reaches early by 15 minutes. Find the distance between hostel and college.

- (A) 60 km - (Alternative 1)
- (B) 65 km - (Alternative 2)
- (C) 75 km - (Alternative 4)
- (D) 80 km - (Alternative 3)

Question No.106

1.00

Bookmark

Time taken by Vicky and Rakesh to cover a distance of 1000 km are in the ratio of 43 : 41. Find the ratio of their speeds.

- (A) 41:43 - (Alternative 1)
- (B) 39:27 - (Alternative 3)
- (C) 27:39 - (Alternative 4)
- (D) 37:41 - (Alternative 2)

Question No.107

1.00

Bookmark

How many ways that 936 mobiles can be distributed equally to the students in the class?

- (A) 24 - (Alternative 4)
- (B) 20 - (Alternative 3)
- (C) 14 - (Alternative 1)
- (D) 16 - (Alternative 2)

Question No.108

1.00

Bookmark

Amir shared 700 gifts among 4 kids. The share of the first kid, twice the share of second kid, thrice the share of third kid and four times the share of fourth kid are all equal. Find the sum of gifts received by 1st kid and 2nd kid.

- (A) 460 - (Alternative 1)
- (B) 480 - (Alternative 3)
- (C) 440 - (Alternative 2)
- (D) **504 - (Alternative 4)**

Question No.109

1.00

Bookmark

In a support project of an English based company, there are 519 male and 519 female employees. The average productivity of all the employees is 69 calls per day. The average calls attended by a male employee is 69 calls per day. What is the average calls attended per day by a female employee?

- (A) 67 - (Alternative 1)
- (B) 71 - (Alternative 3)
- (C) **69 - (Alternative 2)**
- (D) 73 - (Alternative 4)

Question No.110

1.00

Bookmark

A train takes 49 seconds to cross a bridge of length 238 m. If the same train takes 15 seconds to cross a sign board, find the length of the train.

- (A) **105 m - (Alternative 3)**
- (B) 84 m - (Alternative 2)
- (C) 100 m - (Alternative 4)
- (D) 72 m - (Alternative 1)

Question No.111

1.00

Bookmark

What is the height of the cuboid, if the cube of diagonal $19\sqrt{3}$ cm is melted and casted, the cuboid's length is the same as the cube's side and the breadth of the cuboid is 9.5 cm?

- (A) **38 cm - (Alternative 4)**
- (B) 34 cm - (Alternative 3)
- (C) 32 cm - (Alternative 2)
- (D) 36 cm - (Alternative 1)

Question No.112

1.00

Bookmark

Find the number of trailing Zeros in 421!

- (A) 97 - (Alternative 1)
- (B) **103 - (Alternative 3)**
- (C) 99 - (Alternative 2)
- (D) 105 - (Alternative 4)

Question No.113

1.00

Bookmark

Simplify:

$$(12^4)^2 \times \frac{1}{1728^2} \times 12 + 24 = ?$$

- (A) 1852 - (Alternative 2)
(B) 1652 - (Alternative 3)
(C) 1541 - (Alternative 1)
(D) 1752 - (Alternative 4)

Question No.114

1.00

Bookmark

The shopkeeper added 40% of the cost price as mark up and then he gives a discount of same 40% on the marked price for a sale, then what will be the overall profit or loss percentage.

- (A) 16% loss - (Alternative 4)
(B) 16% profit - (Alternative 2)
(C) 14% loss - (Alternative 3)
(D) 14% profit - (Alternative 1)

Question No.115

1.00

Bookmark

When a number divided by 114 it leaves a remainder 14. What will be the remainder, when the same number divided by 19.

- (A) 12 - (Alternative 2)
(B) 14 - (Alternative 4)
(C) 10 - (Alternative 1)
(D) 16 - (Alternative 3)

Question No.116

1.00

Bookmark

A shopkeeper sells a product at the rate of Rs.1863 and earns a profit of 12.5%. Find the amount which is equal to half of the cost price of the product.

- (A) Rs.826 - (Alternative 2)
(B) Rs.830 - (Alternative 4)
(C) Rs.824 - (Alternative 1)
(D) Rs.828 - (Alternative 3)

Question No.117

1.00

Bookmark

If the radius of a circle is Thirteen times, its perimeter will become how many times of its previous perimeter?

- (A) 15 - (Alternative 4)
(B) 13 - (Alternative 2)

- (C) 12 - (Alternative 1)
(D) 14 - (Alternative 3)

Question No.118

1.00

Bookmark

Martin donates 13% of his Salary to Visually challenged organization, 12% of the Salary to orphanage, 14% of his Salary to Physically challenged organization and 16% of his Salary to the foundations for medical help. The remaining amount Rs.34245 of Salary has been deposited in the bank for monthly expenses. Find the amount donated to Orphanage.

- (A) Rs.9123 - (Alternative 4)
(B) **Rs.9132 - (Alternative 1)**
(C) Rs.9312 - (Alternative 2)
(D) Rs.9321 - (Alternative 3)

Question No.119

1.00

Bookmark

The difference between the interest earned on the same amount invested under compound interest and simple interest at same rate of interest for 2 years is Rs. 52. If the rate of interest is 4% p.a. then find the amount invested?(in Rs.)

- (A) 31500 - (Alternative 3)
(B) **32500 - (Alternative 1)**
(C) 35500 - (Alternative 4)
(D) 33500 - (Alternative 2)

Question No.120

1.00

Bookmark

Station master decides that the length and the breadth of the rectangular Digital Board should be increased by 11% and decreased by 11% respectively. Find the overall change in the area

- (A) 1.44% decrease - (Alternative 4)
(B) **1.21% decrease - (Alternative 2)**
(C) 1.44% increase - (Alternative 3)
(D) 1.21% increase - (Alternative 1)