

Roll No:

Registration No:

Name:

Date: **10-Jan-2019 -3rd Shift**

Examination: **Online Examination - SI**

Section 1 - Online Examination

Question No.1

1.00

Bookmark

Where is Mandal's style of Mandla?

- (A) Maharashtra - (Alternative 1)
- (B) Rajasthan - (Alternative 2)
- (C) Gujarat - (Alternative 3)
- (D) Punjab - (Alternative 4)

Question No.2

1.00

Bookmark

The Chief Justice of India's High Court is appointed by whom?

- (A) Governor - (Alternative 2)
- (B) Chief Justice of India - (Alternative 3)
- (C) President - (Alternative 1)
- (D) Prime Minister - (Alternative 4)

Question No.3

1.00

Bookmark

What is the nickname of Andre Agassi?

- (A) Double Kicker - (Alternative 3)
- (B) Surfer - (Alternative 4)
- (C) The Las Vegas Kid - (Alternative 2)
- (D) Acer - (Optional 1)

Question No.4

1.00

Bookmark

Where is the Tarapur nuclear power plant located?

- (A) Orissa - (Alternative 2)
- (B) Maharashtra - (Alternative 4)
- (C) Rajasthan - (Alternative 1)
- (D) Gujarat - (Alternative 3)

Question No.5

1.00

Bookmark

Oceanic streams of high and low flows are called-

- (A) Heat - (Alternative 2)
- (B) Spring - (Alternative 3)
- (C) Tidal - (Alternative 4)

(D) **Soft - (Alternative 1)**

Question No.6

1.00

Bookmark

What is the atomic number of the indium element?

- (A) **49 - (Optional 4)**
(B) 36 - (Optional 1)
(C) 44 - (Optional 2)
(D) 54 - (Optional 3)

Question No.7

1.00

Bookmark

The word 'Butterfly Stroke' is related to which game?

- (A) Tennis - (Alternative 3)
(B) Shooting - (Alternative 1)
(C) Volleyball - (Alternative 4)
(D) **तैराक - (Alternative 2)**

Question No.8

1.00

Bookmark

The formula for finding acceleration is:

- (A) Velocity x time - (Alternative 2)
(B) Time / velocity - (Optional 3)
(C) Work / Time - (Optional 4)
(D) **Velocity / Time - (Optional 1)**

Question No.9

1.00

Bookmark

What is the name of the IUPAC of acetic acid?

- (A) **Ethanoic acid - (Alternative 2)**
(B) Butenike Acid - (Alternative 4)
(C) Methanoke Acids - (Alternative 1)
(D) Propanic acid - (Alternative 3)

Question No.10

1.00

Bookmark

How much is the dimension of nitrous oxide (HNO_2)?

- (A) 2.8×10^{-4} - (Optional 4)
(B) **4.5×10^{-4} - (Alternative 2)**
(C) 3.8×10^{-4} - (Optional 3)
(D) 1.5×10^{-4} - (Optional 1)

Question No.11

1.00

Bookmark

What does the pineal gland secrete?

- (A) Androgen - (Alternative 2)
- (B) **Melatonin - (Alternative 3)**
- (C) Glucose - (Alternative 4)
- (D) Insulin - (Alternative 1)

Question No.12

1.00

Bookmark

What is the currency name of Switzerland?

- (A) Swiss Dollar - (Alternative 1)
- (B) **Swiss Franc - (Alternative 3)**
- (C) Swiss Taka - (Alternative 4)
- (D) Swiss Lira - (Alternative 2)

Question No.13

1.00

Bookmark

Jharkhand's capital is-

- (A) **Ranchi - (Alternative 3)**
- (B) Raipur - (Alternative 2)
- (C) Jaipur - (Alternative 1)
- (D) Panaji - (Alternative 4)

Question No.14

1.00

Bookmark

Who discovered the ribosomes in the cell?

- (A) D. Ivanovski - (Alternative 3)
- (B) Stephen's Halls - (Alternative 2)
- (C) **George I'm Pailade - (Alternative 4)**
- (D) Alec Zafri - (Optional 1)

Question No.15

1.00

Bookmark

The word 'corner kick' is used in which game?

- (A) Golf - (Alternative 4)
- (B) Cricket - (Alternative 3)
- (C) **Football - (Optional 1)**
- (D) Hockey - (Alternative 2)

Question No.16

1.00

Bookmark

When did the liberal exchange rate management system (LERMS) dissolve?

- (A) March 1995 - (Alternative 2)
- (B) **March 1993 - (Alternative 4)**
- (C) March 1994 - (Alternative 3)
- (D) March 1996 - (Alternative 1)

Question no.17

1.00

Bookmark

The lower house of the Indian Parliament is called-

- (A) State Council - (Alternative 3)
(B) State Assembly - (Alternative 4)
(C) Rajya Sabha - (Alternative 2)
(D) **Lok Sabha - (Alternative 1)**

Question No.18

1.00

Bookmark

Where is the statue of God Gomateshwar?

- (A) Srisailam - (Alternative 4)
(B) Mount Abu - (Alternative 1)
(C) **Shravanabelagola - (Alternative 3)**
(D) Arasavalli - (Alternative 2)

Question No.19

1.00

Bookmark

Who wrote the book 'Unbreakable: An Autobiography'?

- (A) Air Leo - (Alternative 3)
(B) **Mary Kom - (Alternative 2)**
(C) Shiva Thapa - (Alternative 4)
(D) Vikas Krishna Yadav - (Alternative 1)

Question No.20

1.00

Bookmark

Who is responsible for the election of State Legislative Assemblies?

- (A) State Governor - (Alternative 4)
(B) **Central Election Commission - (Alternative 1)**
(C) President of India - (Alternative 3)
(D) State Election Commission - (Alternative 2)

Question no.21

1.00

Bookmark

Which of the following countries does not get the border from India?

- (A) China - (Alternative 2)
(B) **Thailand - (Alternative 1)**
(C) Pakistan - (Alternative 3)
(D) Afghanistan - (Alternative 4)

Question no.22

1.00

Bookmark

How many members of India's Lok Sabha can nominate?

- (A) **2 - (Optional 2)**
(B) 6 - (Optional 3)

- (C) 12 - (Optional 1)
(D) 1 - (Optional 4)

Question no.23

1.00

Bookmark

When was the 'Calcutta Cricket and Football Club' (CC & FC) established?

- (A) 1678 AD - (Alternative 4)
(B) 1834 AD - (Alternative 3)
(C) 1800 AD - (Alternative 2)
(D) **1792 AD - (Alternative 1)**

Question no.24

1.00

Bookmark

Where is the headquarters of India's 'Food Safety and Standards Authority' (FSSAI)?

- (A) Chennai - (Alternative 4)
(B) **New Delhi - (Alternative 1)**
(C) Kolkata - (Alternative 3)
(D) Mumbai - (Alternative 2)

Question No.25

1.00

Bookmark

What is the distance between the Sun and the Jupiter Planet?

- (A) 978.5 million km - (Optional 4)
(B) **778.5 million km - (Optional 2)**
(C) 678.5 million km - (Optional 1)
(D) 878.5 million km - (Optional 3)

Question no.26

1.00

Bookmark

Where was the first session of the Indian National Congress?

- (A) **Bombay - (Alternative 2)**
(B) West Bengal - (Alternative 3)
(C) Delhi - (Alternative 1)
(D) Punjab - (Alternative 4)

Question no.27

1.00

Bookmark

Where have the pictures of Padmapani Bodhisatta been found?

- (A) Ellora Caves - (Alternative 4)
(B) Tiger Caves - (Alternative 1)
(C) Badami Caves - (Alternative 2)
(D) **Ajanta Caves - (Alternative 3)**

Question no.28

1.00

Bookmark

Who became the first Indian woman cricket player to score a century in International 20 (T20)

cricket matches?

- (A) Mithali Raj - (Alternative 2)
- (B) Latika Kumari - (Alternative 4)
- (C) Veda Krishnamurthy - (Alternative 1)
- (D) Harmanpreet Kaur - (Alternative 3)

Question no.29

1.00

Bookmark

Who was the Chairman of the 13th Finance Commission?

- (A) Dr. Vijay L. Kelkar - (Alternative 2)
- (B) Dr. Y. V. Reddy - (Alternative 3)
- (C) Mr. C. Rangarajan - (Alternative 1)
- (D) Mr. N. Of Leo - (Alternative 4)

Question No.30

1.00

Bookmark

Disaster Management Bill / Act passed -

- (A) In 2000 - (Alternative 1)
- (B) In 1995 - (Alternative 3)
- (C) In 2005 - (Alternative 4)
- (D) In 2010 - (Alternative 2)

Question No.31

1.00

Bookmark

When was the first general election of the Lok Sabha?

- (A) 1953-54 - (Optional 3)
- (B) 1946-47 - (Optional 1)
- (C) 1949-50 - (Optional 4)
- (D) 1951-52 - (Optional 2)

Question No.32

1.00

Bookmark

The capital of Morocco is-

- (A) Amsterdam - (Alternative 2)
- (B) Maputo - (Alternative 4)
- (C) Niyami - (Alternative 1)
- (D) Rabat - (Alternative 3)

Question No.33

1.00

Bookmark

Which of the following states has the highest number of Assembly seats in India?

- (A) Madhya Pradesh - (Alternative 4)
- (B) Uttar Pradesh - (Alternative 2)
- (C) Bihar - (Alternative 3)
- (D) Tamil Nadu - (Alternative 1)

Question No.34

1.00

Bookmark

Who was the leader of 'One Movement'?

- (A) Vasu Dev - (Alternative 2)
- (B) Bhagat Singh - (Alternative 4)
- (C) **Madari Pasi - (Alternative 1)**
- (D) Gadkari - (Alternative 3)

Question No.35

1.00

Bookmark

The dead body of the soil is called organic component-

- (A) Arid - (Alternative 4)
- (B) **Humus - (Alternative 3)**
- (C) Biomedical - (Alternative 2)
- (D) Rapids - (Alternative 1)

Question No.36

1.00

Bookmark

In which country is the Padma flows?

- (A) Myanmar - (Alternative 4)
- (B) Germany - (Alternative 1)
- (C) **Bangladesh - (Alternative 2)**
- (D) Pakistan - (Alternative 3)

Question No.37

1.00

Bookmark In SI method, multiplication is the prefix of 10^{-21} _____.

- (A) AXA - (Alternative 1)
- (B) **Zepto - (Alternative 4)**
- (C) Zeta - (Alternative 2)
- (D) FEMA - (Alternative 3)

Question No.38

1.00

Bookmark

Who wrote the book 'Jiban Smriti'?

- (A) Mitra - (Alternative 4)
- (B) Lakshmibai - (Alternative 3)
- (C) Bipin Chandrapal - (Alternative 1)
- (D) **Rabindranath Tagore - (Alternative 2)**

Question No.39

1.00

Bookmark

The principle of light wave was proposed by whom?

- (A) Paul Dirac - (Alternative 4)
- (B) Robert A. Milkyan - (Alternative 2)
-

- (C) **Christian Hughes - (Alternative 1)**
(D) Homi Jahangir Bhabha - (Alternative 3)

Question No.40

1.00

Bookmark

Which of the following is not related to football?

- (A) Pelé - (Alternative 2)
(B) Lionel Messi - (Optional 1)
(C) Neymar - (Alternative 3)
(D) **Michael Schumacher - (Alternative 4)**

Question No.41

1.00

Bookmark

The President of India has a tenure-

- (A) **5 years - (Optional 4)**
(B) 1 year - (Optional 3)
(C) 6 years - (Optional 2)
(D) 4 years - (Optional 1)

Question No.42

1.00

Bookmark

In India's cultural history, who belong to the north and the Dravidians of the South?

- (A) Painting - (Alternative 3)
(B) Drama - (Alternative 4)
(C) Music - (Alternative 2)
(D) **Temples - (Alternative 1)**

Question No.43

1.00

Bookmark

Who was the chairmanship of the interim cabinet built in 1946?

- (A) Bhimrao Ambedkar - (Alternative 1)
(B) Rajendra Prasad - (Alternative 3)
(C) Rajagopalachari - (Alternative 4)
(D) **Jawaharlal Nehru - (Alternative 2)**

Question no.44

1.00

Bookmark

Union Territory of India is governed by whom?

- (A) **President of India - (Alternative 3)**
(B) Council of Ministers - (Alternative 1)
(C) Union Defense Minister - (Alternative 4)
(D) Union Finance Minister - (Alternative 2)

Question No.45

1.00

Bookmark

Two main methods of cultivating neel were private and _____.

- (A) Yard - (Alternative 1)
- (B) Yarn - (Optional 3)
- (C) Rann - (Alternative 2)
- (D) **Rayat - (Alternative 4)**

Question No.46

1.00

Bookmark

The CRR is a complete

- (A) Cash Reserve Report - (Alternative 3)
- (B) **Cash Reserve Ratio - (Alternative 2)**
- (C) Casual Reserve Ratio - (Alternative 4)
- (D) Counter Reserve Ratio - (Alternative 1)

Question no.47

1.00

Bookmark

What is the minimum age for becoming a member of the Rajya Sabha?

- (A) 25 years - (Optional 3)
- (B) **30 years - (Alternative 2)**
- (C) 35 years - (Optional 4)
- (D) 21 years - (Optional 1)

Question no.48

1.00

Bookmark

Normally the _____ leaves the mineral substances in other parts of the plant.

- (A) TrackHeeds - (Optional 3)
- (B) Xylem - (Alternative 1)
- (C) **Phloem - (Alternative 2)**
- (D) Vessel - (Optional 4)

Question No.49

1.00

Bookmark

Gadkari rebellion happened in which of the following places?

- (A) Durgapur - (Alternative 1)
- (B) Asansol - (Alternative 2)
- (C) **Kolhapur - (Alternative 3)**
- (D) Bidhannagar - (Alternative 4)

Question No.50

1.00

Bookmark

The trench of Japan is located in which ocean?

- (A) Arctic Ocean - (Alternative 3)
- (B) **Pacific Ocean - (Alternative 4)**
- (C) Indian Ocean - (Alternative 2)
- (D) Atlantic Ocean - (Alternative 1)

Question No.51

1.00

Find the next number in the following series:

487, 488, 492, 501, 517,?

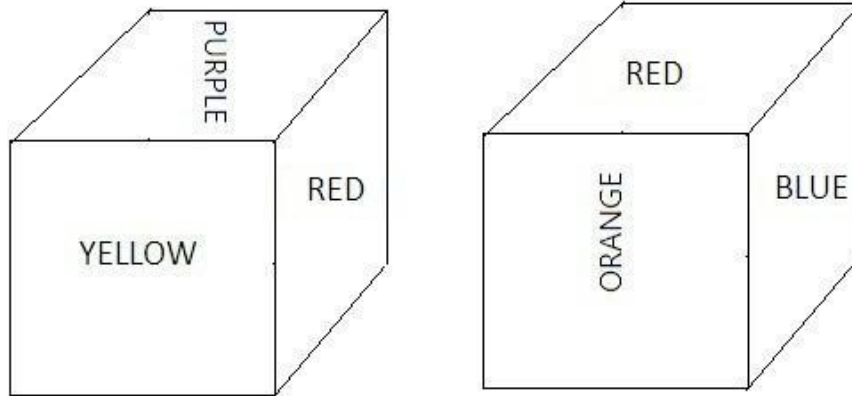
- (A) 533 - (Alternative 4)
 (B) 532 - (Optional 3)
 (C) 552 - (Alternative 2)
 (D) **542 - (Optional 1)**

Question No.52

1.00

Bookmark

The surface of a single dice shown as per the picture below is painted with PURPLE, red, yellow, blue, gray and orange colors. Gray color What color is the surface of opposite surface?



- (A) Yellow - (Alternative 1)
 (B) Blue - (Alternative 2)
 (C) **Red - (Optional 3)**
 (D) Orange - (Alternative 4)

Question No.53

1.00

Bookmark

A question has been given in this question and a statement related to it. Read the passage carefully and review the statement based on it. Indian agriculture has recorded its presence globally. India is the world's largest producer of milk and pulses and it is the second largest in the world in the production of rice, wheat, fruits, vegetables and sugarcane.

India's foodgrain production was more than 250 million tonnes in 2011-12, during which rice production was more than 100 million tonnes and wheat production was more than 90 million tonnes.

According to 2011, India's total arable land was 159.7 million hectares (394.6 million acres), which is the highest after the US in the whole of the world. It cultivates 82.6 million hectares (215.6 million acres), which is the highest in the world.

Statement: India is the second largest producer of rice in the world.

Select the most suitable option below.

A-statement is absolutely true.

B-Query is probably true.

C-statement can not be determined.

D-statement is completely false.



- (A) **A - (Alternative 1)**
- (B) B - (Alternative 2)
- (C) D - (Alternative 4)
- (D) C - (Alternative 3)

Question No.54

1.00

Bookmark

QUALITY is coded as JFZORGB in a fixed code language. How will PLACID be coded in that same language?

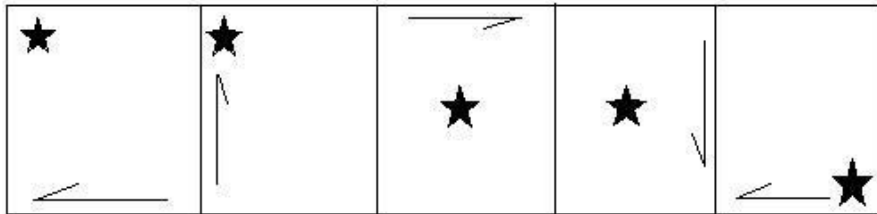
- (A) OKZBHC - (Optional 1)
- (B) **KOZXRW - (Optional 4)**
- (C) QMBDJE - (Optional 2)
- (D) KZORXW - (Optional 3)

Question no.55

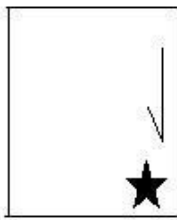
1.00

Bookmark

Select the appropriate picture in the given series to select the options.

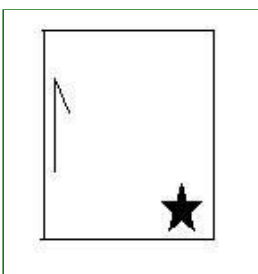


- (A)



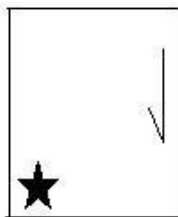
- (Optional 1)

- (B)



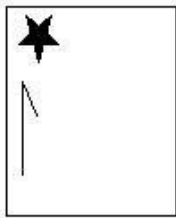
- (Optional 2)

- (C)



- (Optional 4)

- (D)



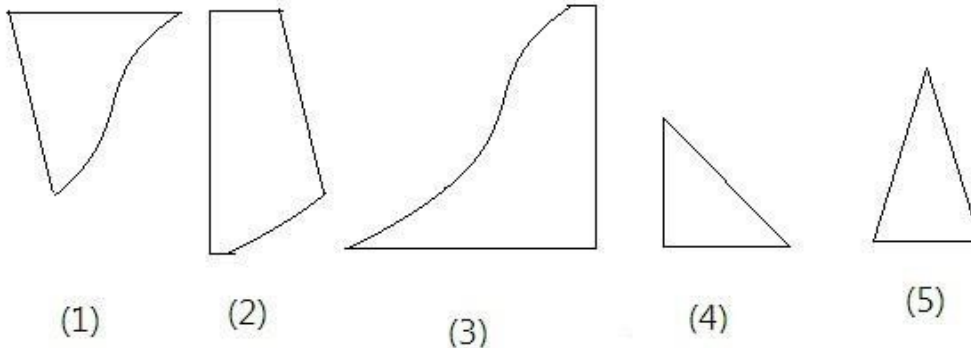
- (Optional 3)

Question no.56

1.00

Bookmark

From the following options, select the correct option that creates a perfect square (three of the five images below).



- (A) 3,4,5 - (Optional 3)
- (B) 2,3,4 - (Alternative 2)
- (C) 1,2,3 - (Optional 1)
- (D) 1,4,5 - (Optional 4)

Question no.57

1.00

Bookmark

If the mirror is placed on the shaded line then the correct mirror image of the given picture will be-



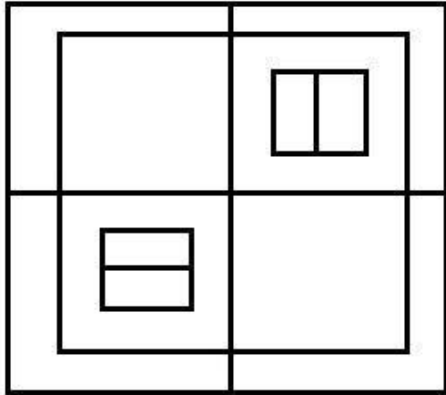
- (A) **СYPRUS** - (Optional 2)
- (B) **2YRЬУС** - (Optional 1)
- (C) **2YRUS** - (Optional 3)
- (D)

Question no.58

1.00

Bookmark

How many classes are there in the given picture?



- (A) 18 - (Optional 4)
- (B) 14 - (Optional 2)
- (C) 12 - (Optional 1)
- (D) 15 - (Optional 3)

Question No.59

1.00

Bookmark

In this question three statements have been given and four related conclusions have been given. You should consider each of the statements given in the statements as true and together with the given conclusions, it is to be decided that in relation to the information given in the statements, which of them Conclusions are reasonable without any reasonable doubt?

Statement: Some children are students. Some are the captains. All Captains are Disciples.

- Conclusion: 1. Some disciples are students.
 2. Some captains are children.
 3. No captain is a child.
 4. Some students are children.

- (A) Only conclusions 1 and 2 are logical - (Alternative 1)
- (B) Only conclusions 2 and 3 are logical - (Optional 3)
- (C) Only conclusions 2 and 4 are logical - (Alternative 2)
- (D) Only 1,4 and 2 or 3 are rational - (Alternative 4)

Question No.60

1.00

Bookmark

Select the water image of the given shape with the options.

ADDRESS

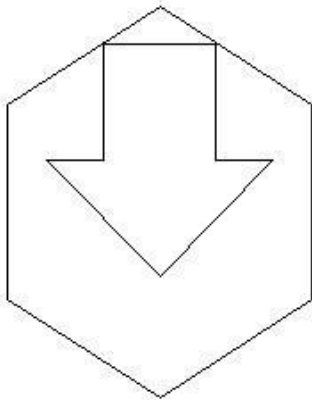
- (A) ADDRESS - (Optional 4)
- (B) ADDRESS - (Optional 1)
- (C) ADDRESS - (Optional 2)
- (D) ADDRESS - (Optional 3)

Question No.61

1.00

Bookmark

What is the number of straight lines in the given picture?



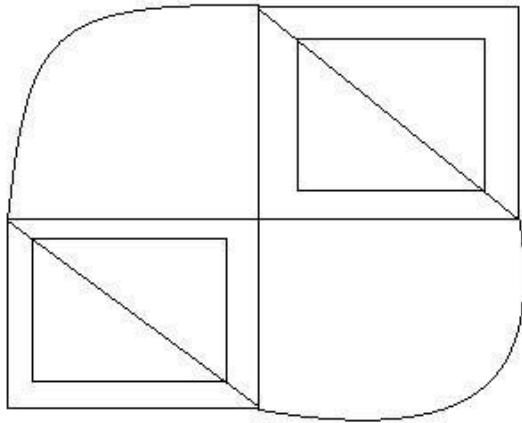
- (A) 12 - (Optional 3)
- (B) 15 - (Optional 1)
- (C) 17 - (Optional 4)
- (D) 16 - (Optional 2)

Question No.62

1.00

Bookmark

How many right angled triangles can be made from the given picture?



- (A) 8 - (Optional 2)
- (B) 13 - (Optional 3)
- (C) 15 - (Optional 4)
- (D) 10 - (Optional 1)

Question No.63

1.00

Bookmark

In this question the relation between different elements has been given in the statement. Two conclusions related to the statement have been given.

Statement: $M \leq N < O \geq P < Q$

Conclusion:

- I. $O > M$
 II. $M \geq O$

Select the appropriate of the following options.

A. The only conclusion i is logical is B. only the conclusions ii is logical C. Either the conclusions i or ii is rational D. Neither conclusion ii nor rational is E. i and ii both conclusions are rational.

- (A) D - (Alternative 4)
- (B) A - (Alternative 1)
- (C) C - (Alternative 3)
- (D) B - (Alternative 2)

Question No.64

1.00

Bookmark

A is the brother of B who is C's brother, D is the daughter of A. What is D's relation with C?

- (A) Cage - (Alternative 1)
- (B) Aunt - (Alternative 4)
- (C) Nice - (Alternative 3)
- (D) Daughter - (Alternative 2)

Question No.65

1.00

Bookmark

In this question, a statement and related two findings have been given in the form of i and ii. Considering each thing given in the statement as true, considering both the findings together, to make sure that the information given in the statement Which of the conclusions in relation to them is reasonable without any reasonable doubt?

Statement: John, a German philosopher, is a good mathematician.

Conclusion:

- i). John is a German.
- ii). All German philosophers are mathematicians.

Select the one most suitable in the following options:

- A. The only conclusion i is logical is
- B. only the conclusions ii is logical
- C. Either the conclusions i or ii is rational
- D. Neither conclusion ii nor rational is
- E. i and ii both conclusions are rational.

- (A) B - (Alternative 2)
- (B) A - (Alternative 1)
- (C) D - (Alternative 4)
- (D) C - (Alternative 3)

Question No.66

1.00

Bookmark

Read the given information carefully and answer the questions related to it.

The eight friends A, B, C, D, E, F, G and H are sitting in the center of a circle, (they do not have to be the same)

- . The location of A is the third to the right of F, which is sitting on the left of the D on the second number.
- ii. C and H are sitting face to face with each other.
- iii. None of F and C are sitting next to B.
- iv. B is not sitting in between H and A.
- v. G is seated opposite A.

Which of the following is the pair of which the second is the opposite of the first?

- (A) BD - (Optional 2)
- (B) AF - (Alternative 1)
- (C) CA - (Optional 3)
- (D) EB - (Alternative 4)

Question No.67

1.00

Bookmark

Based on the argument used in the first pair, replace the question mark with the correct option in the second pair.

4956: 24 :: 1149: ??

- (A) 15 - (Optional 2)
- (B) 14 - (Optional 4)
- (C) 18 - (Optional 3)
- (D) 20 - (Optional 1)

Question No.68

1.00

Bookmark

In this question two statements and two related findings have been given in the form of i and ii. Assuming each thing given in the statements as true, considering both the findings together, to make sure that the information given in the statements Which of the conclusions in relation to

them is reasonable without any reasonable doubt?

Statement: All the rings are crowns. All crowns are linen.

Conclusion:

i). All the rings are linen.

ii). There are some linen rings.

Select the one most suitable in the following options:

A. The only conclusion i is logical is

B. only the conclusions ii is logical

C. Either the conclusions i or ii is rational

D. Neither conclusion ii nor rational is

E. i and ii both conclusions are rational.

(A) A - (Alternative 1)

(B) B - (Alternative 2)

(C) E - (Alternative 4)

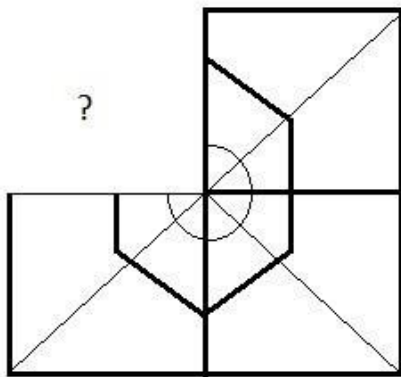
(D) C - (Alternative 3)

Question No.69

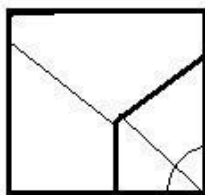
1.00

Bookmark

Select from the selection of the correct shape, which is given the following picture:

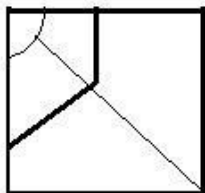


(A)



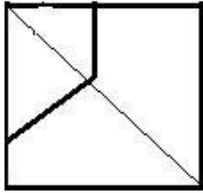
- (Optional 2)

(B)



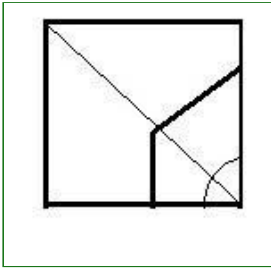
- (Optional 1)

(C)



- (Optional 4)

(D)



- (Optional 3)

Question No.70

1.00

Bookmark

Four of the following given below are similar in some way and so they form a group among themselves. Which of these is not related to this group?

Kiwi, pigeon, duck, vulture, fox

- (A) Duck - (Alternative 3)
(B) Fox - (Alternative 2)
(C) Vulture - (Alternative 1)
(D) Penguin - (Alternative 4)

Question No.71

1.00

Bookmark

In a fixed code language, CAPTION is coded as SDFWQRL. How will DECLINE be coded in the same language?

- (A) EFDMJOF - (Optional 3)
(B) CDBKHMD - (Optional 4)
(C) FHGOHQL - (Alternative 2)
(D) DEFMOFJ - (Optional 1)

Question No.72

1.00

Bookmark

Four of the following given below are similar in some way and hence they form a group among themselves. Which of these is not related to this group?

Q, L, J, N, A

- (A) J - (Alternative 3)
(B) Q - (Optional 2)
(C) L - (Alternative 1)
(D) A - (Alternative 4)

Question No.73

1.00

Bookmark

A boy pointing to a woman said, "This is the wife of my mother's sister's brother." What is the relation between that boy's mother to that woman?

- (A) Sister in law - (Alternative 2)

- (B) Aunt - (Alternative 4)
- (C) SaaS - (Alternative 3)
- (D) Sister - (Alternative 1)

Question No.74

1.00

Bookmark

Based on the argument used in the first pair, replace the question mark with the correct option in the second pair.

NT: SY :: CU: ??

- (A) FY - (Alternative 2)
- (B) GZ - (Optional 3)
- (C) **HZ - (Optional 1)**
- (D) GY - (Alternative 4)

Question No.75

1.00

Bookmark

Find the next number in the following series:

93, 96, 91, 98, 87, ?

- (A) 96 - (Optional 1)
- (B) 104 - (Alternative 2)
- (C) 106 - (Alternative 4)
- (D) **100 - (Optional 3)**

Question No.76

1.00

Bookmark

Four of the following given below are similar in some way and so they form a group among themselves. Which of these is not related to this group?

BEH, MPS, JLP, QTW, DGJ

- (A) DGJ - (Alternative 2)
- (B) **JLP - (Optional 4)**
- (C) MPS - (Alternative 1)
- (D) BEH - (Alternative 3)

Question No.77

1.00

Bookmark

A question has been given in this question and a statement related to it. Read the passage carefully and review the statement based on it. Indian agriculture has recorded its presence globally. India is the world's largest producer of milk and pulses and it is the second largest in the world in the production of rice, wheat, fruits, vegetables and sugarcane.

India's foodgrain production was more than 250 million tonnes in 2011-12, during which rice production was more than 100 million tonnes and wheat production was more than 90 million tonnes.

According to 2011, India's total arable land was 159.7 million hectares (394.6 million acres), which is the highest after the US in the whole of the world. It cultivates 82.6 million hectares (215.6 million acres), which is the highest in the world.

Statement: By 2020, the production of wheat in the United States will be more than 250 million tonnes.

Select the most suitable option below.

A-statement is absolutely true.
B-Query is probably true.
C-statement can not be determined.
D-statement is completely false.

- (A) B - (Alternative 2)
(B) C - (Alternative 3)
(C) D - (Alternative 4)
(D) A - (Alternative 1)

Question No.78

1.00

Bookmark

In this question, four statements are given. Three findings related to them are given i, ii, and iii. Assuming the statements as truth, decide which conclusions / statements are true in relation to the statements.

Statement: $A \geq B$, $C > B$, $D < C$, $E = D$

Conclusion:

i) $B > D$

ii) $B < A$ iii)

$C > E$

- (A) Only ii and iii - (optional 3)
(B) Only iii - (Alternative 4)
(C) I and ii only - (Alternative 2)
(D) All - (Optional 1)

Question No.79

1.00

Bookmark

Find the next number in the following series:

38, 40, 83, 253, 1017, ?

- (A) 5085 - (Optional 1)
(B) 4092 - (Alternative 2)
(C) 5091 - (Optional 3)
(D) 4073 - (Optional 4)

Question No. 80

1.00

Bookmark

Based on the argument used in the first pair, replace the question mark with the correct option in the second pair.

Gander: Goose :: Dog: ??

- (A) Bitch - (Alternative 3)
(B) Puppy - (Alternative 2)
(C) Foal - (Optional 4)
(D) Mare - (Alternative 1)

Question No.81

1.00

Bookmark

Find the next number in the following series:

78, 85, 100, 123, 154,?

- (A) 169 - (Alternative 2)
(B) 193 - (Alternative 4)
(C) 179 - (Optional 3)
(D) 185 - (Optional 1)

Question No.82

1.00

Bookmark

Based on the argument used in the first pair, replace the question mark with the correct option in the second pair.

Duck: Quack :: Snake: ??

- (A) Squeak - (Alternative 3)
(B) Bray - (Alternative 1)
(C) Grunt - (Alternative 2)
(D) Hiss - (Alternative 4)

Question no.83

1.00

Bookmark

Please read the given information carefully and then answer the questions given.

The eight friends A, B, C, D, E, F, G and H are sitting in the center of a circle, (they do not have to be the same)

- . The location of A is the third to the right of F, which is sitting on the left of the D on the second number.
ii. C and H are sitting face to face with each other.
iii. None of F and C are sitting next to B.
iv. B is not sitting in between H and A.
v. G is seated opposite A.

How many people are sitting between G and E of the given options?

- (A) 4 - (Optional 1)
(B) 1 - (Optional 3)
(C) 3 - (Optional 4)
(D) 0 - (Optional 2)

Question no.84

1.00

Bookmark

Read the given information carefully and answer the questions related to it.

The eight friends A, B, C, D, E, F, G and H are sitting in the center of a circle, (they do not have to be the same)

- . The location of A is the third to the right of F, which is sitting on the left of the D on the second number.
ii. C and H are sitting face to face with each other.
iii. None of F and C are sitting next to B.
iv. B is not sitting in between H and A.
v. G is seated opposite A.

If the location of E is replaced by B, the location of C is shifted from place of G and the location of A is mutual, then who will be the third position on the right of C?

- (A) F - (Optional 3)
- (B) E - (Alternative 1)
- (C) **D - (Alternative 4)**
- (D) B - (Alternative 2)

Question no.85

1.00

Bookmark

Read the following statements and answer the question on their basis.

A @ B means that A is the mother of
A, B means A # B, A is the father
of A, B is A, B means A is B's brother,
A% B means A is sister of B.

Equation S According to \$ R # Q @ P, how is S related to P?

- (A) Grandfather - (Alternative 3)
- (B) Uncle - (Alternative 1)
- (C) Cage - (Alternative 2)
- (D) **Grandkan - (Alternative 4)**

Question no.86

1.00

Bookmark

The English company based on a subsidiary project has 503 male and 503 female employees. The average productivity of all employees is 53 calls per day. If a male employee receives an average of 53 calls per day, then what is the average number of calls received by women employees every day?

- (A) 49 - (Optional 1)
- (B) 51 - (Alternative 2)
- (C) 55 - (Optional 4)
- (D) **53 - (Optional 3)**

Question No.87

1.00

Bookmark

The average weight of 93 notebooks kept in a box is 9.3 Kg. Keeping 1 notebook in box and its average weight of 9.4 Kg Gets it. Find the load of new notebooks?

- (A) 19.1 Kg. - (Optional 3)
- (B) **18.7 Kg. - (Optional 2)**
- (C) 19.5 KG - (Alternative 4)
- (D) 18.3 kg - (Optional 1)

Question no.88

1.00

Bookmark

Resolve:

$$\frac{1}{8} \div \frac{1}{8} \div \frac{1}{8} \div \frac{1}{8} \div \frac{1}{8} = ?$$

- (A) 484 - (Optional 3)
(B) 512 - (Optional 2)
(C) 464 - (Optional 1)
(D) 524 - (Alternative 4)

Question No.89

1.00

Bookmark

A shopkeeper sells a product for 1089 rupees and earns 12.5% profit on it. How much will the value of that item be equal to half the rupee?

- (A) Rs. 968 - (Optional 1)
(B) Rs. 684 - (Optional 4)
(C) Rs. 784 - (Alternative 2)
(D) Rs. 484 - (Optional 3)

Question No.90

1.00

Bookmark

The area of a square piece of glass 324 cm^2 , which is placed on top of a table | The width between the glass pieces and one side of the table is 3 cm. Find the length of the table?

- (A) 24 cm - (Optional 3)
(B) 32 cm - (Alternative 2)
(C) 28 cm - (Alternative 4)
(D) 22 cm - (Optional 1)

Question No.91

1.00

Bookmark

A shopkeeper, with an increase of 31% in the cost value of an item, holds a discount of 31% on the sale after marking the price. So, let's know the total percentage gain or loss you get?

- (A) 9.61% Loss - (Optional 4)
(B) 8.64% profit - (Optional 3)
(C) 10.21% Loss - (Optional 1)
(D) 7.44% profit - (Optional 2)

Question No.92

1.00

Bookmark

The Station Master decided to increase the length of a rectangular digital board by 2% and reduce the width by 2%. Find the total change in the area of the board?

- (A) 0.04% reduction - (Optional 3)
(B) 0.09% reduction - (Optional 4)
(C) 0.09% increase - (Optional 1)
(D) 0.04% increase - (Optional 2)

Question No.93

1.00

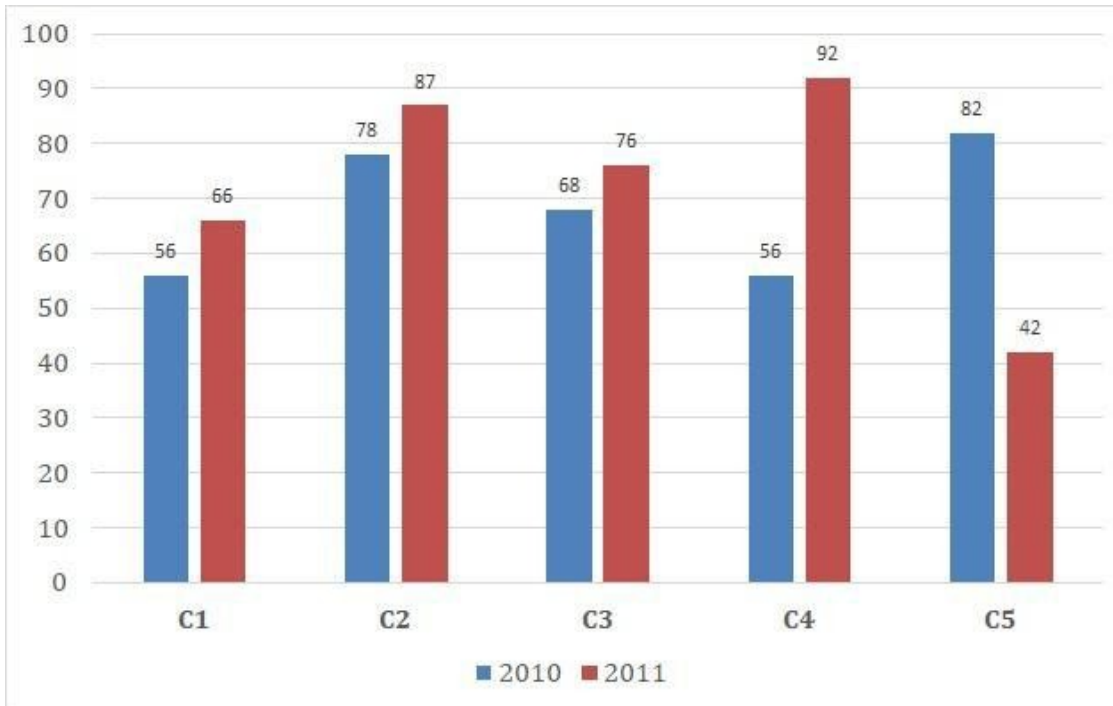
Bookmark

Instructions:

Study the graph the following times and answer the question based on it.

Two consecutive years of the five branches (C1, C2, C3, C4 and C5) of a publishing company have been sold in 2010 and 2011 (in thousandths) of books.

Find the ratio of the total sales made in both the years of branch C2 and the total sales in the two years of branch C4.



- (A) 163: 146 - (Optional 2)
(B) 163: 145 - (Optional 1)
(C) 164: 147 - (Optional 3)
(D) **165: 148 - (Optional 4)**

Question No.94

1.00

Bookmark

There are different types of old coins in the ratio of 11:13:12 in a bag, whose value is Rs 3, Rs 4 and Rs 5 respectively. If the total value of coins is Rs 725, then Rs 3 What is the total number of coins of value?

- (A) 44 - (Optional 3)
(B) 33 - (Alternative 2)
(C) 22 - (Optional 1)
(D) **55 - (Optional 4)**

Question No.95

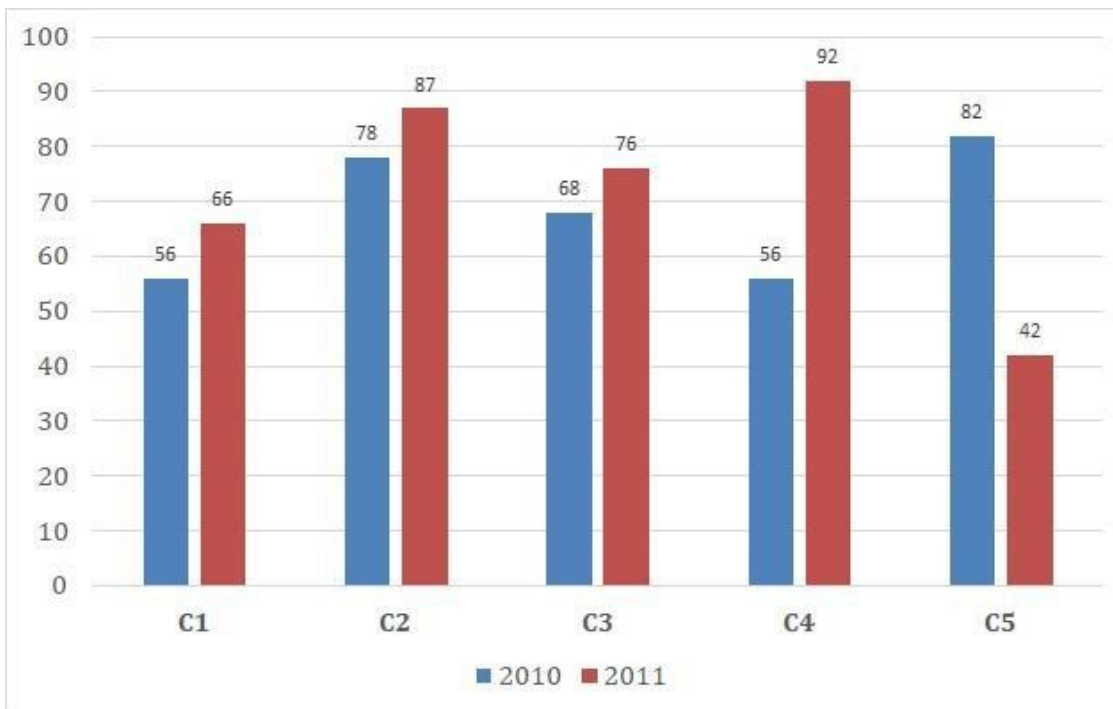
1.00

Bookmark

Instructions:

Study the graph the following times and answer the question based on it. Two consecutive years of the five branches of a publishing company (C1, C2, C3, C4 and C5) have been sold in 2010 and 2011 (in thousandths) of books.

Find out the total sales (in thousand) of company branches C1, C3 and C5 in both years.



- (A) 370 - (Optional 1)
(B) 390 - (Optional 3)
(C) 380 - (Alternative 2)
(D) 400 - (Alternative 4)

Question No.96

1.00

Bookmark

Benoyi donates 16% of his salary to an institution of blind, 12% of the orphans, and 13% of the body of the organism, and gives 14% of his salary as help in the establishment of medical camp. Remaining Rs. 20925 He deposits in the bank for the monthly expense. How much does he donate to the orphanage institution?

- (A) Rs. 5580 - (Optional 2)
(B) Rs. 5680 - (Optional 3)
(C) Rs. 6890 - (Alternative 4)
(D) Rs.4840 - (Optional 1)

Question No.97

1.00

Bookmark

A person travels at the speed of 12 kmph, 18 kmph and 36 kmph on an equilateral triangular plane. Find the average speed of the journey.

- (A) 22 kmph - (Alternative 2)
(B) 32kmph - (Optional 4)
(C) 24 kmph - (Alternative 3)
(D) 18 kmph - (Alternative 1)

Question No.98

1.00

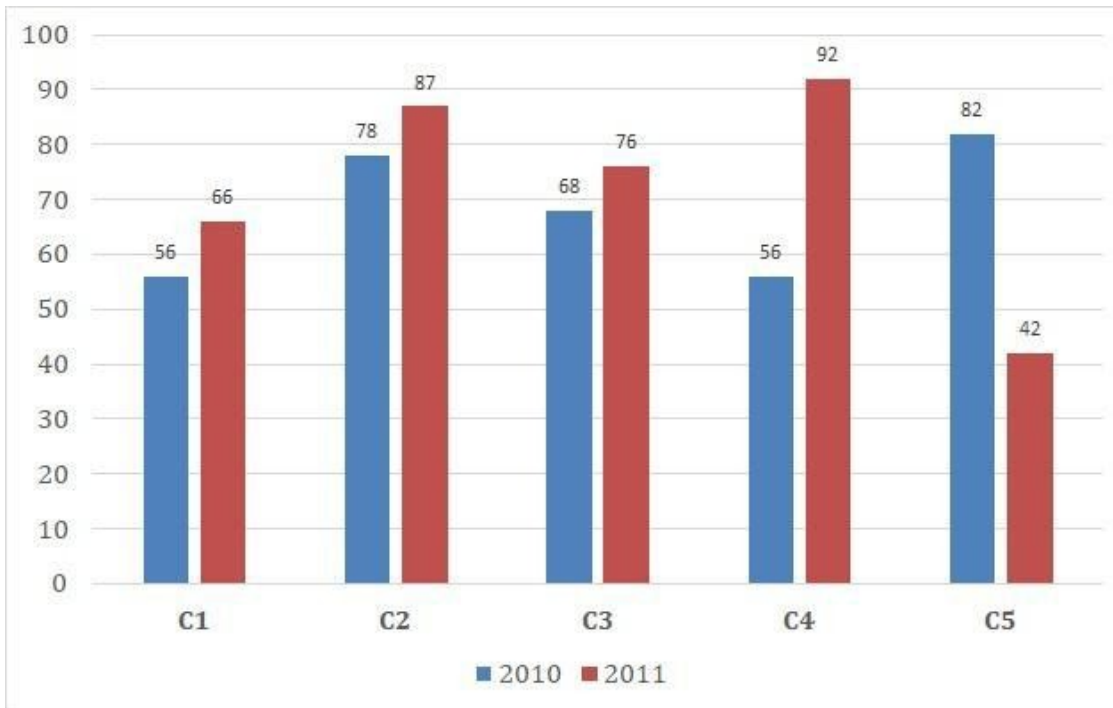
Bookmark

Instructions:

Study the graph the following times and answer the question based on it.

Two consecutive years of the five branches of a publishing company (C1, C2, C3, C4 and C5) have been sold in 2010 and 2011 (in thousand) sales of books.

Find out the average of all the companies (in thousand) of sales in 2010.



- (A) 67 - (Optional 1)
(B) 69 - (Optional 3)
(C) 70 - (Alternative 4)
(D) 68 - (Alternative 2)

Question No.99

1.00

Bookmark

4400, 8% of the annual interest rate has been invested. If after 5 years, that amount is withdrawn and half the amount is invested in the stock market, then what will be the remaining amount (in Rs.)?

- (A) 4060 - (Alternative 2)
(B) 3080 - (Optional 4)
(C) 4200 - (Optional 1)
(D) 2080 - (Alternative 3)

Question No.100

1.00

Bookmark

A bulb manufacturer found that 11% of their total product was poor. If the number of correct products is 2848, then find the number of bad products?

- (A) 286 - (Optional 1)
(B) 324 - (Alternative 3)
(C) 352 - (Alternative 4)
(D) 245 - (Alternative 2)

Question No.101

1.00

Bookmark

1000km The time taken by Binu and Cairo in determining the distance is 17:14. Find the ratio of their motions.

- (A) **14:17 - (Optional 2)**
(B) 14:15 - (Optional 4)
(C) 12:13 - (Optional 3)
(D) 11:12 - (Optional 1)

Question No.102

1.00

Bookmark

Selling an item for Rs. 1220 will get 11% more profit from the loss obtained on selling the same item for 798 rupees. Find the cost value of that item?

- (A) Rs. 964 - (Alternative 3)
(B) Rs. 898 - (Optional 2)
(C) Rs. 824 - (Alternative 4)
(D) **Rs. 998 - (Optional 1)**

Question No.103

1.00

Bookmark

The difference between compound interest and simple interest earned in 2 years on the same amount is 28 rupees. If the interest rate is 4% annual, then calculate the amount invested (in Rs.)

- (A) 14500 - (Optional 4)
(B) 16500 - (Optional 3)
(C) 18500 - (Optional 2)
(D) **17500 - (Optional 1)**

Question No.104

1.00

Bookmark

64! Find the number of trailing zeros in?

- (A) 18 - (Optional 2)
(B) 16 - (Optional 1)
(C) 12 - (Optional 4)
(D) **14 - (Optional 3)**

Question No.105

1.00

Bookmark

Resolve:

$$\left((3^4)^2 \times \frac{1}{27^2} \right)^2 + 9 = ?$$

- (A) 60 - (Optional 2)
(B) 100 - (Optional 1)
(C) 80 - (Optional 3)

(D) 90 - (Alternative 4)

Question No.106

1.00

Bookmark

How many times the perimeter of the circle will increase the radius of the circle five times?

- (A) 7 - (Optional 4)
(B) 5 - (Optional 2)
(C) 6 - (Optional 3)
(D) 4 - (Optional 1)

Question No.107

1.00

Bookmark

The ratio of the salary of Ram, Raj and Rio is 5: 7: 9. If Rio receives Rs 280 from Ram, how much is the salary of the state (in Rs.)?

- (A) 440 - (Alternative 4)
(B) 480 - (Alternative 3)
(C) 460 - (Alternative 2)
(D) 490 - (Optional 1)

Question No.108

1.00

Bookmark

Resolve:

$$\sqrt{17.64} + \sqrt{70.56} \div 2 = ?$$

- (A) 8.4 - (Optional 3)
(B) 8.2 - (Optional 2)
(C) 8.8 - (Optional 4)
(D) 7.8 - (Optional 1)

Question No.109

1.00

Bookmark

Resolve:

$$2^3 \div 2^{-2} + \sqrt{36} + \sqrt{144} = ?$$

- (A) 66 - (Optional 3)
(B) 33 - (Optional 4)
(C) 44 - (Optional 1)
(D) 55 - (Alternative 2)

Question no.110

1.00

Bookmark

No amount on compound interest is doubled to the original amount in 3 years. In how many years will it be eight times its original amount?

- (A) 6 - (Optional 4)
(B) 7 - (Optional 1)
(C) 8 - (Optional 3)
(D) **9 - (Optional 2)**

Question No.111

1.00

Bookmark

There are 10 sticks in a gift box. The average weight of the first 4 edges is 27 grams and the average weight of the remaining 6 edges is 28 grams. Find the total average weight (in grams) of all the curves?

- (A) **27.6 - (Optional 3)**
(B) 28 - (Alternative 4)
(C) 27 - (Optional 2)
(D) 27.4 - (Optional 1)

Question no.112

1.00

Bookmark

Find the product of those numbers whose minimum equator (lc) is 25 and maximum consonant (ms) is 8?

- (A) 220 - (Alternative 4)
(B) **200 - (Optional 1)**
(C) 160 - (Alternative 2)
(D) 180 - (Optional 3)

Question No.113

1.00

Bookmark

If the cube with a $6\sqrt{3}$ cm diagonal is melted after making the cuboid, its height will be, if the length of the cuboid is equal to the arm of the cube and the width of the cuboid is 3 cm.

- (A) **12 cm - (Optional 1)**
(B) 14 cm - (Alternative 2)
(C) 8 cm - (Optional 3)
(D) 10 cm - (Alternative 4)

Question No.114

1.00

Bookmark

Divide a number by 36 and 7 remains the remainder. By dividing the same number by 9, how much will the remainder get?

- (A) 5 - (Optional 3)
(B) 6 - (Optional 1)
(C) **7 - (Optional 4)**
(D) 8 - (Optional 2)

Question No.115

1.00

Bookmark

A person reaches the hospital with a speed of 10 kmph at a speed of 7 minutes from the hostel. If he used to ride a bicycle at a speed of 12 kmph then it would reach 6 minutes early. Find the distance between the hostel and the college?

- (A) 11 km - (Optional 3)
(B) 17 km - (Alternative 2)
(C) 19 km - (Optional 1)
(D) **13 km - (Optional 4)**

Question no.116

1.00

Bookmark

Sachin shares 250 gifts in 4 children. First gift of the child in the part of the child, twice the gift which came in the other child's part, the gift of three children in the third child's part and four times the gift of the fourth child, the number of all is equal. How many gifts have come in the other child's part?

- (A) **60 - (Optional 4)**
(B) 30 - (Optional 3)
(C) 120 - (Optional 2)
(D) 140 - (Optional 1)

Question No.117

1.00

Bookmark

Dermi receives 71 points out of 80 in French, 81 out of 100 in English, 51 in 70 in Spanish, and 31 in 50 in Japanese. Find the total percentage of the marks obtained by him?

- (A) 64% - (Optional 3)
(B) 88% - (Optional 2)
(C) 68% - (Optional 4)
(D) **78% - (Optional 1)**

Question no.118

1.00

Bookmark

A train takes 53 seconds to cross 288 m long bridge. If the same train takes 17 seconds to cross a sign board, then know the length of the train.

- (A) 140 m - (Alternative 4)
(B) 124 m - (Optional 1)
(C) 132 m - (Alternative 2)
(D) **136 m - (Optional 3)**

Question No.119

1.00

Bookmark

How can 520 mobile be distributed to an equal number of students in a class of students?

- (A) **16 - (Optional 2)**
(B) 24 - (Optional 4)
(C) 14 - (Optional 1)
(D) 20 - (Optional 3)

Question No.120

1.00

Bookmark

Dorlin walks at its usual speed ($\frac{5}{6}$) and determines the normal time it takes to set a certain distance in a fixed distance in 16 minutes.

- (A) 1 Hour - (Optional 1)
- (B) 56 Minutes - (Optional 4)
- (C) 1 hour 40 minutes - (optional 3)
- (D) **1 hour 20 minutes - (Optional 2)**