

Roll No:

Registration No:

Name:

Date: **13-Jan-2019-2nd Shift**

Examination: **Online Examination - SI**

Section 1 - Online Examination

Question No.1

1.00

Bookmark

Chinese traveler Wansang was contemporary-

- (A) Chandragupta II - (Alternative 2)
- (B) Rukmadevi - (Alternative 4)
- (C) **Harsh Vardhan Ki - (Alternative 3)**
- (D) Bindusara ki - (Optional 1)

Question No.2

1.00

Bookmark

Which of the following is not the original duty?

- (A) Protecting the Country's Rich Heritage - (Alternative 3)
- (B) Protecting Public Property - (Alternative 2)
- (C) **Right to Constitutional Remedies - (Alternative 4)**
- (D) Development of Scientific Thinking, Humanity and Curiosity - (Alternative 1)

Question No.3

1.00

Bookmark

What is the value of the electric field equal to?

- (A) Electrical speed - (Optional 3)
- (B) Electrical Conductivity - (Optional 1)
- (C) Electrical Dipole - (Alternative 2)
- (D) **Electric Flux - (Alternative 4)**

Question No.4

1.00

Bookmark

Who chairs the joint sitting of the two houses of the Parliament?

- (A) Prime Minister - (Alternative 3)
- (B) President - (Alternative 4)
- (C) **Speaker of Lok Sabha - (Alternative 2)**
- (D) Chairman of Rajya Sabha - (Alternative 1)

Question No.5

1.00

Bookmark

In which state are the Garhajat hills located?

- (A) Andhra Pradesh - (Alternative 1)
- (B) **Orissa - (Alternative 4)**
- (C) Karnataka - (Alternative 3)

(D) Maharashtra - (Alternative 2)

Question No.6

1.00

Bookmark

What historical decision was made based on the basic structure theory?

- (A) Golaknath Case - (Alternative 2)
(B) Indra Sahni Case - (Alternative 4)
(C) s. R. Bomai Case - (Alternative 1)
(D) **Keshavanand Bharti Case - (Alternative 3)**

Question No.7

1.00

Bookmark

In which year the Olympic Games got international status?

- (A) 1956 - (Alternative 4)
(B) 1914 - (Optional 3)
(C) **1908 - (Alternative 2)**
(D) 1896 - (Optional 1)

Question No.8

1.00

Bookmark

From whom does the Formosa Water Treaty separate Taiwan from?

- (A) **Mainland China - (Alternative 3)**
(B) North Korea - (Alternative 2)
(C) Japan - (Alternative 1)
(D) Philippines - (Alternative 4)

Question No.9

1.00

Bookmark

The highest peak of Satpura is-

- (A) **Prasadgarh - (Alternative 2)**
(B) Guru Shikhar - (Alternative 4)
(C) Parasnath - (Alternative 3)
(D) Mahendragiri - (Alternative 1)

Question No.10

1.00

Bookmark

What is the force charged by gravity on an object?

- (A) Displacement - (Optional 3)
(B) **Weight - (Optional 1)**
(C) Mass - (Alternative 2)
(D) Velocity - (Alternative 4)

Question No.11

1.00

Bookmark

In the given options, Running and Chasing is a unique feature of which game?

- (A) Diving - (Alternative 4)

- (B) Golf - (Alternative 3)
(C) Khoj-lose - (Alternative 2)
(D) Bridge - (Alternative 1)

Question No.12

1.00

Bookmark

The maximum limit of the Council of Ministers was fixed under which Constitutional Amendment Act?

- (A) 91st Constitutional Amendment - (Alternative 3)
(B) 97th Constitutional Amendment - (Alternative 4)
(C) 86th Constitutional Amendment - (Alternative 2)
(D) 99th Constitutional Amendment - (Optional 1)

Question No.13

1.00

Bookmark

The concept of the procedure established by law is taken from which constitution?

- (A) Government of India Act 1935 - (Alternative 2)
(B) Constitution of the United States - (Alternative 3)
(C) Constitution of Japan - (Alternative 1)
(D) Constitution of Britain - (Alternative 4)

Question No.14

1.00

Bookmark

The word "Primus inter Pares" shows which of the following?

- (A) President - (Alternative 1)
(B) Home Minister - (Alternative 3)
(C) Prime Minister - (Alternative 2)
(D) Cabinet Minister - (Alternative 4)

Question No.15

1.00

Bookmark

The provisions related to the federal structure of the state system given in the Constitution can be modified by whom?

- (A) Constitutional frame time for voting only for Union Ministers - (Alternative 2)
(B) Special Parliament only in Parliament - (Alternative 1)
(C) Special majority in Parliament with the consent of half the members of the Rajya Sabha - (Alternative 3)
(D) Effective majority in parliament - (Alternative 4)

Question No.16

1.00

Bookmark

The theory of comparative cost was given-

- (A) David Ricardo - (Alternative 1)
(B) Karl Marx - (Alternative 4)
(C) Adam Smith - (Alternative 2)
(D) Weber - (Alternative 3)

Question no.17

1.00

Bookmark

In the nucleus is called the construction of a dual structure by nucleosomes-

- (A) Non-Histone Protein - (Alternative 3)
- (B) Octamer - (Alternative 2)
- (C) **Chromatin - (Alternative 4)**
- (D) Histone - (Alternative 1)

Question No.18

1.00

Bookmark

Which of the following states has the highest wind power generation capacity?

- (A) **Tamil Nadu - (Alternative 2)**
- (B) West Bengal - (Alternative 4)
- (C) Gujarat - (Alternative 1)
- (D) Maharashtra - (Alternative 3)

Question No.19

1.00

Bookmark

In what form is the irregularly suitable phase of the atom in crystalline matter known?

- (A) Catalytic Definition - (Alternative 3)
- (B) Local Defect - (Alternative 2)
- (C) Label Defact - (Alternative 4)
- (D) **Point Defect - (Alternative 1)**

Question No.20

1.00

Bookmark

In which of the following sports, 'walting table' is used?

- (A) **Gymnastics - (Alternative 3)**
- (B) Basketball - (Alternative 4)
- (C) Squash - (Alternative 2)
- (D) Fencing - (Optional 1)

Question no.21

1.00

Bookmark

The famous Asphan Jahi dynasty is related to which regional empire?

- (A) **Hyderabad - (Alternative 3)**
- (B) Travancore - (Alternative 2)
- (C) Mysore - (Alternative 4)
- (D) Bengal - (Alternative 1)

Question no.22

1.00

Bookmark

Which of the following national parks is not in Karnataka?

- (A) Nagarhole - (Alternative 4)
- (B) Bandipur - (Alternative 1)
- (C) **Kebul Lamjao - (Alternative 2)**

(D) Bannerughatta - (Alternative 3)

Question no.23

1.00

Bookmark

India's first industrial policy was announced-

- (A) 1952 - (Alternative 3)
- (B) 1950 - (Alternative 2)
- (C) 1948 - (Optional 1)
- (D) 1956 - (Alternative 4)

Question no.24

1.00

Bookmark

All other ministers, including the Prime Minister, are collectively responsible for _____.

- (A) Lok Sabha - (Alternative 2)
- (B) Political Party - (Alternative 4)
- (C) President - (Alternative 1)
- (D) Rajya Sabha - (Alternative 3)

Question No.25

1.00

Bookmark

Syed Ahmad of Rae Bareli was associated with which of the following movement?

- (A) Mopala Rebellion - (Alternative 2)
- (B) One Movement - (Alternative 1)
- (C) Wahhabi Movement - (Alternative 3)
- (D) Kuka Movement - (Alternative 4)

Question no.26

1.00

Bookmark

Thang Ta is the martial art style of which of the following states?

- (A) Manipur - (Alternative 2)
- (B) Sikkim - (Alternative 3)
- (C) Assam - (Alternative 1)
- (D) Mizoram - (Alternative 4)

Question no.27

1.00

Bookmark

What is the method of obtaining ammonia by reacting from nitrogen to hydrogen?

- (A) Haber method - (Alternative 2)
- (B) Method of Calgon - (Alternative 4)
- (C) Incineration Method - (Alternative 1)
- (D) Heat-Shower Method - (Alternative 3)

Question no.28

1.00

Bookmark

In the context of standard currency, the face value is equal to-

- (A) Internal Price - (Optional 1)

- (B) Custom Price - (Optional 4)
- (C) External Value - (Optional 3)
- (D) Token Value - (Optional 2)

Question no.29

1.00

Bookmark

Who was the last Mughal ruler?

- (A) Alamgir II - (Optional 4)
- (B) **Bahadur Shah II - (Alternative 3)**
- (C) Akbar II - (Alternative 1)
- (D) Ahmed Shah - (Alternative 2)

Question No.30

1.00

Bookmark

In the given options, which game is used in "Baton"?

- (A) **Relay - (Alternative 3)**
- (B) Scuba Diving - (Alternative 2)
- (C) Fencing - (Optional 1)
- (D) Football - (Alternative 4)

Question No.31

1.00

Bookmark

Dhaka city is situated on the banks of the river _____.

- (A) Barak - (Alternative 3)
- (B) Antara - (Alternative 4)
- (C) **Buriganga River - (Alternative 2)**
- (D) Brahmaputra - (Alternative 1)

Question No.32

1.00

Bookmark

Which of the following is not the primary area?

- (A) Fisheries - (Alternative 2)
- (B) **Motor Vehicles - (Alternative 3)**
- (C) Animal Husbandry - (Alternative 4)
- (D) Forestry - (Alternative 1)

Question No.33

1.00

Bookmark

What kind of vegetation is found in the climatic zones like Sudan?

- (A) Conifer One - (Alternative 4)
- (B) **Savanna grasslands - (Alternative 1)**
- (C) Fall Forest - (Alternative 3)
- (D) Tropical Evergreen Forests - (Alternative 2)

Question No.34

1.00

Bookmark

Godavari is the source of river-

- (A) Deccan Plateau - (Alternative 4)
- (B) Chota Nagpur Plateau - (Alternative 2)
- (C) Dandakaranya Bastar Plateau - (Alternative 3)
- (D) **Trimbak Plateau - (Alternative 1)**

Question No.35

1.00

Bookmark

Which award is given to respect the outstanding player in Commonwealth Games?

- (A) Asia Cup - (Alternative 1)
- (B) **David Dixon Trophy - (Alternative 2)**
- (C) Ranji Trophy - (Alternative 4)
- (D) Bhandarkar Trophy - (Alternative 3)

Question No.36

1.00

Bookmark

Which biosactive molecule is used as an immunosuppressive agent in organ transplant patients?

- (A) Statement B - (Alternative 3)
- (B) Streptococins - (Alternative 2)
- (C) Acetabacteria - (Alternative 4)
- (D) **Cyclosporin A - (Alternative 1)**

Question No.37

1.00

Bookmark

Which of the following was the result of the famous peace treaty of Srirangapatnam?

- (A) First Anglo-Mysore War - (Alternative 1)
- (B) **Third Anglo-Mysore War - (Alternative 3)**
- (C) Fourth Anglo-Mysore War - (Alternative 4)
- (D) Second Anglo-Mysore War - (Alternative 2)

Question No.38

1.00

Bookmark

Khardung La Pass is located in which Indian state?

- (A) Uttarakhand - (Alternative 1)
- (B) **Jammu and Kashmir - (Alternative 3)**
- (C) Himachal Pradesh - (Alternative 2)
- (D) Arunachal Pradesh - (Alternative 4)

Question No.39

1.00

Bookmark

Which of the following can make "additional regional law"?

- (A) **Parliament - (Alternative 3)**
- (B) President - (Alternative 1)
- (C) Home Minister - (Alternative 4)
- (D) Prime Minister - (Alternative 2)

Question No.40

1.00

Bookmark

If the period of Lok Sabha is extended due to the National Emergency and when the Emergency is over, how long will the extended period be?

- (A) 3 Months - (Optional 3)
- (B) **6 Months - (Optional 2)**
- (C) 2 Months - (Optional 4)
- (D) 1 year - (Optional 1)

Question No.41

1.00

Bookmark

Which of the following is related to the governor general of the treaty treaty?

- (A) Lord Dalhousie - (Alternative 1)
- (B) Lord Cornwallis - (Alternative 4)
- (C) Lord Hastings - (Alternative 3)
- (D) **Lord Wellesley - (Alternative 2)**

Question No.42

1.00

Bookmark

The words like chishti, suhrawardi and pyadasi are related to which of the following religions?

- (A) Nathpati - (Alternative 3)
- (B) Islam - (Alternative 2)
- (C) Vaishnav - (Alternative 4)
- (D) **Sufi - (Alternative 1)**

Question No.43

1.00

Bookmark

Gobi Desert is found in which of the following countries?

- (A) Pakistan - (Alternative 2)
- (B) **Mongolia - (Alternative 4)**
- (C) India - (Alternative 1)
- (D) Azerbaijan - (Alternative 3)

Question no.44

1.00

Bookmark

Which of the following is not related to cricket?

- (A) Free Hit - (Alternative 3)
- (B) **Gambit - (Alternative 4)**
- (C) Off drive - (Alternative 1)
- (D) Silly Point - (Alternative 2)

Question No.45

1.00

Bookmark

Which magnet retains iron-magnetic properties for long periods at orbital temperature?

- (A) **Permanent Magnet - (Alternative 2)**
-

- (B) Pole Magnets - (Alternative 4)
- (C) Odd Magnet - (Alternative 3)
- (D) Temporary Magnets - (Alternative 1)

Question No.46

1.00

Bookmark

Which of the following empires had their own ancient harbor in Korki?

- (A) **Pandya - (Alternative 4)**
- (B) Pallava - (Alternative 1)
- (C) Chol - (Alternative 3)
- (D) Cher - (Alternative 2)

Question no.47

1.00

Bookmark

What type of vein structure is found commonly found in leaves of bismuthamental plants?

- (A) Peeling vein composition - (Alternative 2)
- (B) Stalking vein composition - (Alternative 4)
- (C) **Trap vein composition - (Alternative 3)**
- (D) Parallel Vein Composition - (Alternative 1)

Question no.48

1.00

Bookmark

What is the specialty of the underdeveloped economy of the following?

- (A) **Agricultural Primacy - (Alternative 3)**
- (B) Excessive Use of Black Market - (Alternative 2)
- (C) Low Population Pressure - (Optional 1)
- (D) Developed Currency Market - (Alternative 4)

Question No.49

1.00

Bookmark

Who laid the foundations of central Hindu College in Benaras?

- (A) Sarojini Naidu - (Alternative 3)
- (B) Madam H.P. Blawatsky - (Alternative 2)
- (C) Madan Mohan Malaviya - (Alternative 4)
- (D) **Annie Besant - (Alternative 1)**

Question No.50

1.00

Bookmark

Which energy in the body develops the ability to work due to its status or region?

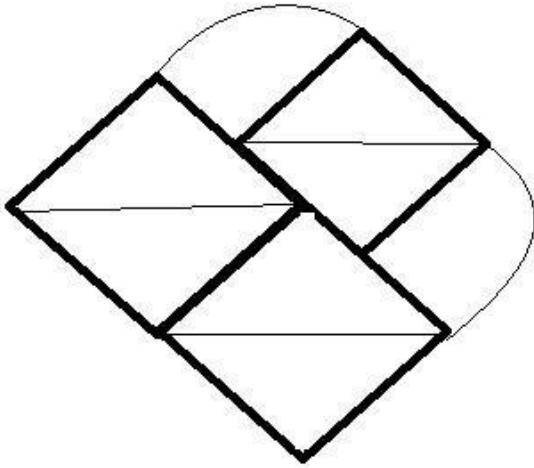
- (A) UP Central Energy - (Alternative 4)
- (B) Synthetic Energy - (Alternative 3)
- (C) **Potential Energy - (Alternative 2)**
- (D) Kinetic Energy - (Alternative 1)

Question No.51

1.00

Bookmark

How many right-angled triangles can be made from given figures?



- (A) 8 - (Optional 1)
(B) 6 - (Optional 2)
(C) 2 - (Optional 4)
(D) 4 - (Optional 3)

Question No.52

1.00

Bookmark

Carefully read the given information and answer the given questions.

8 friends P, Q, R, S, T, U, V and W are sitting in one line, not necessarily in this order. Of these, 4 are facing north and 4 are facing south side.

- i) S and V are sitting on both ends of the line.
- ii) R and T are neighbors.
- iii) U is sitting at the fourth position from the right of V and the second place from the left side of Q.
- iv) S is neither neighbor of Q nor neither of R.
- v) P is sitting at the third position from the right side of T, whose face is towards the north.
- vi) The face of U, P and S is in the same direction.

Who is sitting at the right hand of P?

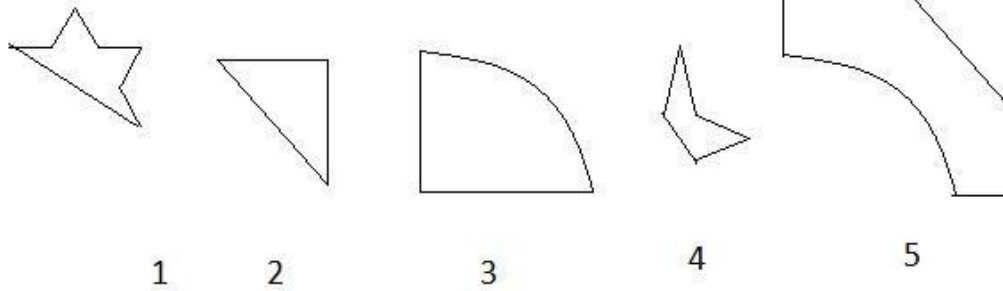
- (A) Q - (Optional 1)
(B) S - (Optional 3)
(C) V - (Alternative 4)
(D) U - (Alternative 2)

Question No.53

1.00

Bookmark

Select the correct option from the given options that can make a full square. (3 of the 5 images are given below)



- (A) 2,4,5 - (Optional 4)
 (B) 3,4,5 - (Optional 2)
 (C) 2,3,4 - (Optional 3)
 (D) 2,3,5 - (Optional 1)

Question No.54

1.00

Bookmark

Four of the following five are similar in a certain way, which create a group. Which one is not related to this group?

Worry, Wonder, Astonish, Amaze, Surprise

- (A) Astonish - (Alternative 1)
 (B) Amaze - (Alternative 3)
 (C) Surprise - (Alternative 4)
 (D) Worry - (Alternative 2)

Question no.55

1.00

Bookmark

In this question, a passage and a statement related to it have been given. Read carefully the verse and review the statement based on it.

This will probably force you to celebrate your next holiday in Luxembourg with the family: Continuously demand to free the fares in trains, trams and buses to control the multitude of transport and air pollution in small countries of the European Union. Has been. The newly elected coalition government's liberal Prime Minister Javier Betel said that the Grandi Dutch in Luxembourg will be free to travel in public vehicles before 2020.

In this connection, Luxembourg's main transport union F. N.C.T.F.E.L.L. Expressing his concern, Landeswer Band Chief Majorus Marange said that if no one is required to sell tickets, then this government plan will increase unemployment. Unless it is approved, we can not accept it. However, he also said that he is also worried that in this, people will not get the benefit of free travel in rural areas.

Statement: The European Union government is conscious of air pollution and traffic congestion.

Select one of the following options.

- A. The statement is definitely true.
 B. The statement is probably true.
 C. Statement can not be determined
 D. Statement is definitely wrong.
- (A) D - (Alternative 4)
 (B) B - (Alternative 2)
 (C) A - (Alternative 1)
 (D) C - (Alternative 3)

Question no.56

1.00

Bookmark

Read the following logic and answer the given question.

A @ B is the son of A, B.

A # B is the daughter of A, B.

A \$ B is the sister of A, B.

A% B is A, B's brother.

How is the equation W @ X \$ Y% Z related to W, Z?

- (A) Uncle - (Alternative 1)
- (B) Nice - (Alternative 2)
- (C) Aunt - (Alternative 3)
- (D) **Nephew - (Alternative 4)**

Question no.57

1.00

Bookmark

In this question, four statements are given in relation between the letters, three, i, ii and iii are given in relation to them. Assuming the statements as true, decide which conclusions are completely true in relation to the statements.

Statement. $C < R = E \leq D$; $D = O < W \geq N$; $N > U \geq T$

conclusion

i) $w > t$

ii) $r \leq o$

iii) $o > c$

- (A) Only i) - (Optional 1)
- (B) Either ii) either iii) - (Optional 3)
- (C) **All - (Optional 4)**
- (D) Only i) and iii) - (Optional 2)

Question no.58

1.00

Bookmark

A statement in this question and the two conclusions related to them are given in the form of i and ii, assuming that the statements given in the statements to be true are to make sure that the conclusions regarding the statements are logical?

Statement: John is happy.

Conclusion:

i) John is living a happy life.

ii) John is going to get some good news.

Choose the right one from the following options.

(A) The only i conclusion is correct.

(B) Only ii conclusions are correct.

(C) either i conclusion or ii is correct.

(D) neither i conclusion nor ii is correct.

(E) Both i and ii findings are correct

- (A) B - (Alternative 2)
- (B) **D - (Alternative 4)**
-

- (C) A - (Alternative 1)
(D) C - (Alternative 3)

Question No.59

1.00

Bookmark

In a certain code language, if BLIND is written in PFCHR, how will FRESH be written in the same code language?

- (A) VKYMW - (Optional 1)
(B) VJILW - (Optional 3)
(C) VKIMW - (Alternative 2)
(D) **VJYLW - (Optional 4)**

Question No.60

1.00

Bookmark

A is the spouse of B, whose only daughter is C. B is the grandfather of D, whose father is E. C is not married to E. How is D related to C, if D is a male?

- (A) Nice - (Alternative 1)
(B) Son - (Alternative 4)
(C) Father - (Optional 2)
(D) **Nephew - (Alternative 3)**

Question No.61

1.00

Bookmark

Five to four in the following are similar in a certain way, which make up a group. Which one of these is not related to this group?

RPN, MQO, FDB, ZXV, LJH

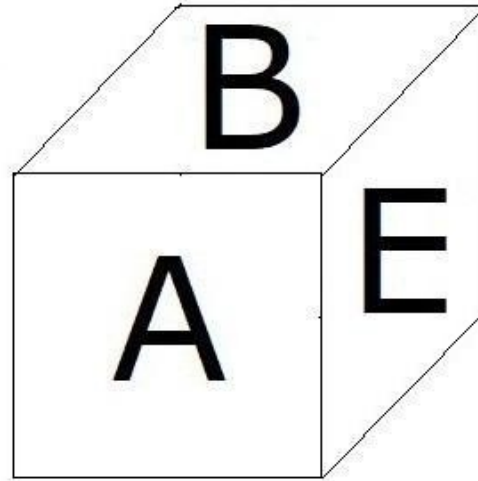
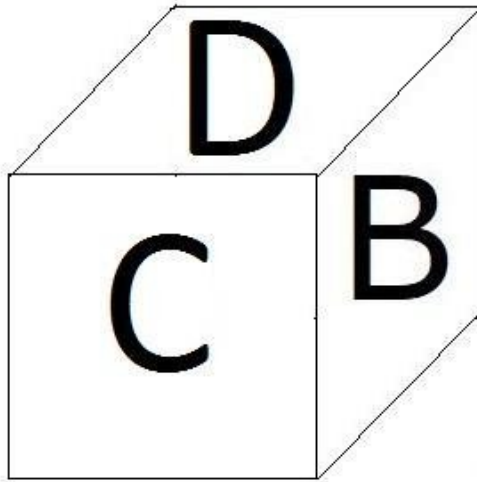
- (A) **MQO - (Optional 1)**
(B) FDB - (Optional 3)
(C) LJH - (Alternative 2)
(D) RPN - (Alternative 4)

Question No.62

1.00

Bookmark

According to the given picture, 6 letters A, B, C, D, E and F are marked on each surface of the dice. The letter on which the letter is inscribed on the surface is inscribed on it.



- (A) F - (Alternative 4)
- (B) C - (Alternative 1)
- (C) A - (Alternative 3)
- (D) E - (Alternative 2)

Question No.63

1.00

Bookmark

Carefully read the given information and answer the given questions.

8 friends P, Q, R, S, T, U, V and W are sitting in one line, not necessarily in this order. Of these, 4 are facing north and 4 are facing south side.

- i) S and V are sitting on both ends of the line.
- ii) R and T are neighbors.
- iii) U is sitting at the fourth position from the right of V and the second place from the left side of Q.
- iv) S is neither neighbor of Q nor neither of R.
- v) P is sitting at the third position from the right side of T, whose face is towards the north side.
- vi) The mouth of U, P and S is in the same direction.

Which of the following statements is wrong with respect to the above order?

- (A) The faces of S and T are in the same direction. - (Optional 1)
- (B) T is sitting at the far left of S. - (Optional 4)
- (C) W is sitting between Q and V. - (Optional 3)
- (D) U and P are neighbors. - (Optional 2)

Question No.64

1.00

Bookmark

Find the next number in the category.
19, 24, 48, 53, 106,?

- (A) 110 - (Optional 3)
- (B) 107 - (Optional 1)
- (C) 109 - (Alternative 2)

(D) 111 - (Optional 4)

Question No.65

1.00

Bookmark

Two statements in this question and the two conclusions related to them are given in the form of i and ii, assuming that the things given in the statements are true, it is to decide which conclusions are rational in relation to the statements?

Statement. All candies are good. All cookies are good.

Conclusion i) There are some candy cookies.

ii) There are some good cookies.

Choose from the following options,

(A) Only conclusions i is logical.

(B) The only conclusion ii is logical.

(C) either i or ii conclusion is rational.

(D) neither i nor ii conclusion is rational.

(E) i and ii both conclusions are rational.

(A) D - (Alternative 4)

(B) A - (Alternative 1)

(C) B - (Alternative 2)

(D) C - (Alternative 3)

Question No.66

1.00

Bookmark

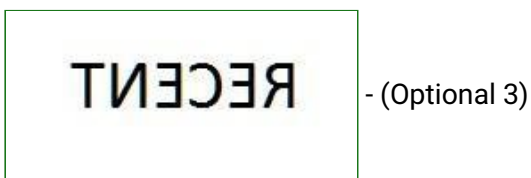
If a mirror is placed on the shaded line, which of the following options is the correct image of the given figure?



(A)

RECENT - (Optional 4)

(B)



(C)

RECENT - (Optional 2)

(D)

Question No.67

1.00

Bookmark

Carefully read the given information and answer the given questions.

8 friends P, Q, R, S, T, U, V and W are sitting in one line, not necessarily in this order. Of these, 4 are facing north and 4 are facing south side.

- i) S and V are sitting on both ends of the line.
- ii) R and T are neighbors.
- iii) U is sitting at the fourth position from the right of V and the second place from the left side of Q.
- iv) S is neither neighbor of Q nor neither of R.
- v) P is sitting at the third position from the right side of T, whose face is towards the north.
- vi) The face of U, P and S is in the same direction.

Which of the following options is the mouth of the people of the South direction?

- (A) TRS - (Optional 3)
- (B) UPQ - (Optional 1)
- (C) QVW - (Alternative 2)
- (D) **SPV - (Optional 4)**

Question No.68

1.00

Bookmark

Change the question mark with the option that follows the applied logic in the first pair.
1307: 22 :: 1965: ??

- (A) 44 - (Optional 3)
- (B) **42 - (Optional 2)**
- (C) 46 - (Alternative 4)
- (D) 40 - (Optional 1)

Question No.69

1.00

Bookmark

Change the question mark with the option that follows the applied logic in the first pair.
Lion: Courage :: Dove: ??

- (A) Bird - (Alternative 1)
- (B) **Peace - (Alternative 4)**
- (C) War - (Alternative 2)
- (D) Brave - (Optional 3)

Question No.70

1.00

Bookmark

Four of the following five are similar in a certain way, which create a group.

Which one is not related to this group?

U, I, B, E, O

- (A) B - (Alternative 2)
- (B) O - (Optional 3)
- (C) U - (Alternative 1)
- (D) I - (Optional 4)

Question No.71

1.00

Bookmark

In this question the relationship between the various elements of the statement is shown. The statement has two conclusions.

Statement. $S < C \leq R = E > A \geq M$

findings

- i) $S < A$
- ii) $C \leq M$

Select the correct one of the following options.

- (A) The only i conclusion is correct.
 - (B) Only ii conclusions are correct.
 - (C) either i either ii conclusion is correct.
 - (D) neither i nor ii conclusion is correct.
 - (E) i and ii both conclusions are correct.
- (A) C - (Alternative 3)
 - (B) D - (Alternative 4)
 - (C) A - (Alternative 1)
 - (D) B - (Alternative 2)

Question No.72

1.00

Bookmark

In a certain code language, if LAPSE is written OZKHV, how would FAULT be written in the same code language?

- (A) VZFOG - (Optional 3)
- (B) UZGOF - (Optional 1)
- (C) UZFOG - (Alternative 4)
- (D) VZGOF - (Optional 2)

Question No.73

1.00

Bookmark

Change the question mark with the option that follows the applied logic in the first pair.

Screen: Television :: Cord: ??

- (A) Mirror - (Alternative 2)
- (B) Telephone - (Alternative 4)
- (C) Program - (Alternative 3)
- (D) Watch - (Optional 1)

Question No.74

1.00

Bookmark

Choose the right water image of the given question from the given options.

MACHIN

(A)

MIHƆAM - (Optional 1)

(B)

WACHII - (Optional 3)

(C)

MACHII - (Optional 2)

(D)

MACHII - (Optional 4)

Question No.75

1.00

Bookmark

In this question three statements and related three conclusions have been given, assuming the statements given in the statements as truth and to determine which conclusions are rational in relation to the statements?

Statement. All streams are rivers. All Lake Rivers are there. All sea lakes are.

Conclusion: i) Some streams are lake.
ii) There are all sea rivers.
iii) Some rivers are streams.

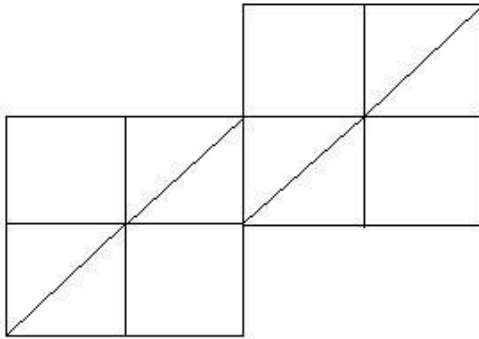
- (A) Only ii and iii - (optional 3)
(B) Only i - (Optional 4)
(C) I and ii only - (Alternative 2)
(D) All - (Optional 1)

Question No.76

1.00

Bookmark

How many classes are there in given picture?



- (A) 13 - (Optional 4)
 (B) 10 - (Optional 1)
 (C) 12 - (Optional 2)
 (D) 14 - (Optional 3)

Question No.77

1.00

Bookmark

Find the next number in the category.
 20, 41, 84, 171, 346, ?

- (A) 695 - (Optional 1)
 (B) 699 - (Optional 3)
 (C) 697 - (Alternative 2)
 (D) 702 - (Alternative 4)

Question No.78

1.00

Bookmark

Find the next number in the category.
 54, 56, 59, 64, 71, ?

- (A) 82 - (Alternative 3)
 (B) 80 - (Optional 1)
 (C) 90 - (Optional 2)
 (D) 96 - (Alternative 4)

Question No.79

1.00

Bookmark

Kiran said to Kumar, "Your son is the only son of my only brother's only brother," How is Kumar related to Kiran?

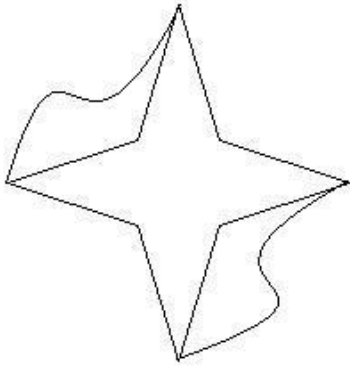
- (A) Son - (Alternative 4)
 (B) Father - (Optional 3)
 (C) Grandfather - (Alternative 2)
 (D) Uncle - (Alternative 1)

Question No. 80

1.00

Bookmark

How straight lines are there in the given picture?



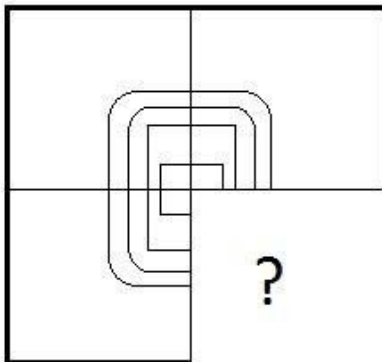
- (A) 12 - (Optional 3)
- (B) 10 - (Optional 1)
- (C) 8 - (Optional 4)
- (D) 11 - (Optional 2)

Question No.81

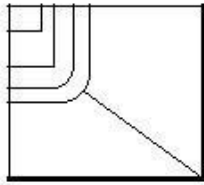
1.00

Bookmark

Select the correct option which will complete the format of the given image.

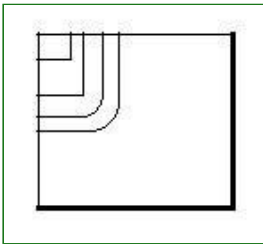


- (A) - (Optional 1)
- (B) - (Optional 4)
- (C)



- (Optional 2)

(D)



- (Optional 3)

Question No.82

1.00

Bookmark

Find the next number in the category.
38, 39, 43, 52, 68,?

- (A) 94 - (Alternative 2)
(B) 93 - (Optional 1)
(C) 95 - (Optional 3)
(D) 96 - (Alternative 4)

Question no.83

1.00

Bookmark

Change the question mark with the option that follows the applied logic in the first pair.
I: C :: S: ??

- (A) A - (Alternative 2)
(B) P - (Alternative 4)
(C) M - (Alternative 3)
(D) L - (Alternative 1)

Question no.84

1.00

Bookmark

In this question, a passage and a statement related to it have been given. Read carefully the verse and review the statement based on it.

In order to reduce traffic congestion and pollution in the European Union, the European Union is constantly demanding free fares for trains, trams and buses in the small countries of the European Union. The newly elected liberal Prime Minister of the coalition government Javier Betel said that the Grandmother of Luxembourg will be free to travel in public vehicles since the beginning of 2020 in Dutch. Knowing this, you would like to go to Luxembourg next to your next vacation.

In this connection, Luxembourg's main transport union F. N.C.T.F.E.L.L.Garges Marange, head of the Land Saver Band, expressed his concern and said that if the government does not need anyone to sell the ticket, then this government plan will increase unemployment. Unless it is approved, we can not accept it. However, he also said that he is also worried that in this, people will not get the benefit of free travel in rural areas.

Statement. The European Union wants to free the transportation facility to benefit the rural people.

Choose one of the following options.

- A. The statement is definitely true.
- B. The statement is probably true.
- C. Statement can not be determined
- D. Statement is definitely wrong.

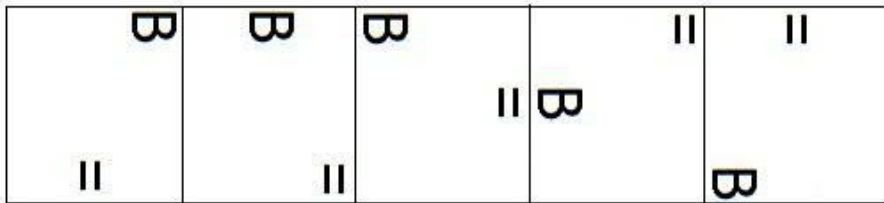
- (A) A - (Alternative 1)
- (B) C - (Alternative 3)
- (C) B - (Alternative 2)
- (D) D - (Alternative 4)

Question no.85

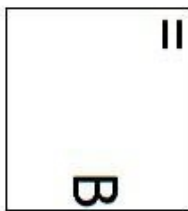
1.00

Bookmark

Select the appropriate picture to come forth from the given series with the following options.

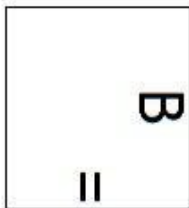


- (A)



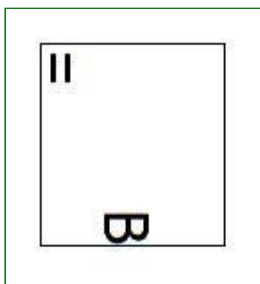
- (Optional 4)

- (B)



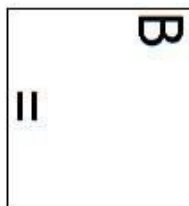
- (Optional 1)

- (C)



- (Optional 2)

- (D)



- (Optional 3)

Question no.86

1.00

Bookmark

The amount of compound interest and simple interest received in two years on the sum of amount is 92 rupees, if the rate of interest is 4%, then calculate the amount invested.

(In rupees)

- (A) 59,500 - (Optional 3)
(B) 58,500 - (Optional 2)
(C) 60,500 - (Optional 4)
(D) **57,500 - (Optional 1)**

Question No.87

1.00

Bookmark

A support base of an English based company has 637 males and 637 female employees. On average, every employee gets 72 calls. 72 call attendants are provided daily by a male employee. What will be the average of the number of calls being added to the women staff daily?

- (A) 71 - (Optional 1)
(B) 73 - (Optional 3)
(C) 74 - (Optional 4)
(D) **72 - (Alternative 2)**

Question no.88

1.00

Bookmark

Martin, 13% of his salary, the organization working for the visually impaired, 12% of his salary orphanage, 14% of his salary, the institution working for the physically challenged people, and 16% of his salary medical assistance. Donated to the institute and deposited the remaining amount of salary in the bank for Rs 38,700 monthly expenditure. Find out the amount donated in the orphanage.

- (A) Rs.13,320 - (Optional 4)
(B) Rs.12,320 - (Optional 3)
(C) Rs.11,320 - (Optional 2)
(D) **Rs.10,320 - (Optional 1)**

Question No.89

1.00

Bookmark

Vimal received 63 out of 80 in French, 86 out of 100 in English, 56 out of 70 in Spanish, and 41 out of 50 in Japanese. What is the total percentage of the marks obtained by him? (% In)

- (A) 80 - (Optional 1)
(B) 83 - (Alternative 4)
(C) **82 - (Alternative 3)**
(D) 81 - (Alternative 2)

Question No.90

1.00

Bookmark

Sheila walks at the speed of her usual speed (24/25) and determines a certain distance in 6 minutes more than the normal speed. Calculate the normal time it takes in determining a certain distance? (in a minute)

- (A) 164 - (Optional 3)
(B) **144 - (Optional 1)**

- (C) 174 - (Alternative 4)
(D) 154 - (Optional 2)

Question No.91

1.00

Bookmark

If a shopkeeper raises the purchase price of an item by 50% and holds a value of 50% on the sale of it, then know the total percentage gain or loss it will have?

- (A) 21% Loss - (Optional 3)
(B) 21% profit - (Optional 1)
(C) **25% Loss - (Optional 4)**
(D) 25% profit - (Optional 2)

Question No.92

1.00

Bookmark

Selling an item for Rs. 1,460 is the loss of 60% more than the profit obtained by selling the same item at Rs. 2,180 at the same rate. Find the purchase price of that item? (In rupees)

- (A) 1,830 - (Optional 2)
(B) 2,130 - (Optional 4)
(C) **1,730 - (Optional 1)**
(D) 1,930 - (Optional 3)

Question No.93

1.00

Bookmark

A shopkeeper sells a product in Rs.3,672 and earns 12.5% profit. Tell the amount that is equal to half of the purchase price of the product (in Rs.)

- (A) 1,532 - (Optional 2)
(B) 1,432 - (Optional 1)
(C) 1,732 - (Optional 4)
(D) **1,632 - (Optional 3)**

Question No.94

1.00

Bookmark

The entire area of the square piece of glass is 1764 cm^2 which is placed above a table. The width between the table and the glass piece is 9 cm. Tell the length of the table | (in cm)

- (A) **60 - (Optional 3)**
(B) 62 - (Alternative 4)
(C) 56 - (Optional 1)
(D) 58 - (Alternative 2)

Question No.95

1.00

Bookmark

Tell us the product of two numbers, whom LS 7897 and M1.

- (A) 7697 - (Optional 3)
(B) 7597 - (Optional 4)
(C) 7797 - (Optional 2)
(D) **7897 - (Optional 1)**

Question No.96

1.00

Bookmark

A person travels at the speed of 9kmph, 18kmph and 12kmph on the surface of an equilateral triangle. Know his average speed. (In Kmph)

- (A) 11 - (Optional 1)
(B) 12 - (Optional 2)
(C) 13 - (Optional 3)
(D) 14 - (Optional 4)

Question No.97

1.00

Bookmark

There are 10 bangles in a gift box. The average weight of the first 4 bangles is 65gms and the remaining weight of the 6 bangles is 66 gms. Tell the average weight of the full bangles (in grams)

- (A) 65.6 - (Optional 3)
(B) 63.6 - (Optional 1)
(C) 66.6 - (Optional 4)
(D) 64.6 - (Optional 2)

Question No.98

1.00

Bookmark

If the radius of a circle becomes 23 times, then how much of its circumference will be the previous perimeter?

- (A) 25 - (Optional 3)
(B) 27 - (Optional 4)
(C) 21 - (Optional 1)
(D) 23 - (Optional 2)

Question No.99

1.00

Bookmark

What is the height of the cube with a $30\sqrt{3}$ cm diagonal melting and making the cuboid? If the length of the cuboid is equal to the arm of the cube, and the width of the cuboid is 15 cm. (in cm)

- (A) 63 - (Alternative 4)
(B) 61 - (Alternative 2)
(C) 60 - (Optional 1)
(D) 62 - (Alternative 3)

Question No.100

1.00

Bookmark

Find the value of x.

$$\frac{2}{5}(x) + \frac{3}{10}(x) - \frac{3}{5}(x) = 571$$

- (A) 5710 - (Optional 3)

- (B) 5510 - (Optional 1)
(C) 5610 - (Alternative 2)
(D) 5810 - (Optional 4)

Question No.101

1.00

Bookmark

A person travels from the hostel to the college with a speed of 15 kmph from the bicycle and reaches a 7-minute delay. If he runs a bike with a speed of 20 kmph then it reaches 7 minutes in advance. Describe the distance between hostel and college. (In km)

- (A) 11 - (Optional 1)
(B) 14 - (Optional 4)
(C) 12 - (Optional 2)
(D) 13 - (Optional 3)

Question No.102

1.00

Bookmark

The station master decides that the length and breadth of the rectangular digital board are increased by 11% and 10% respectively. Find out the total change in the area.

- (A) 0.04% reduction - (Optional 1)
(B) 0.1% reduction - (Optional 2)
(C) 0.1% increase - (Optional 4)
(D) 0.04% increase - (Optional 3)

Question No.103

1.00

Bookmark

753! In the trailing Zeros, let us know.

- (A) 187 - (Alternative 3)
(B) 186 - (Alternative 2)
(C) 188 - (Optional 4)
(D) 185 - (Optional 1)

Question No.104

1.00

Bookmark

The average weight of 79 notebooks placed in a box is 7.9 kg. When another new notebook is placed in the box then the average is 8kg. Specify the weight of the new notebook. (In Kg)

- (A) 15.9 - (Optional 1)
(B) 16.5 - (Optional 4)
(C) 16.3 - (Optional 3)
(D) 16.1 - (Optional 2)

Question No.105

1.00

Bookmark

Aamir distributed 975 gifts among 4 children. The first part of the child is twice the portion of the other child, three times the size of the third child and four times the fourth child's share. Please tell the number of total gifts received by the first and the second child.

- (A) 702 - (Alternative 4)
(B) 682 - (Optional 1)

- (C) 692 - (Optional 3)
(D) 712 - (Alternative 2)

Question No.106

1.00

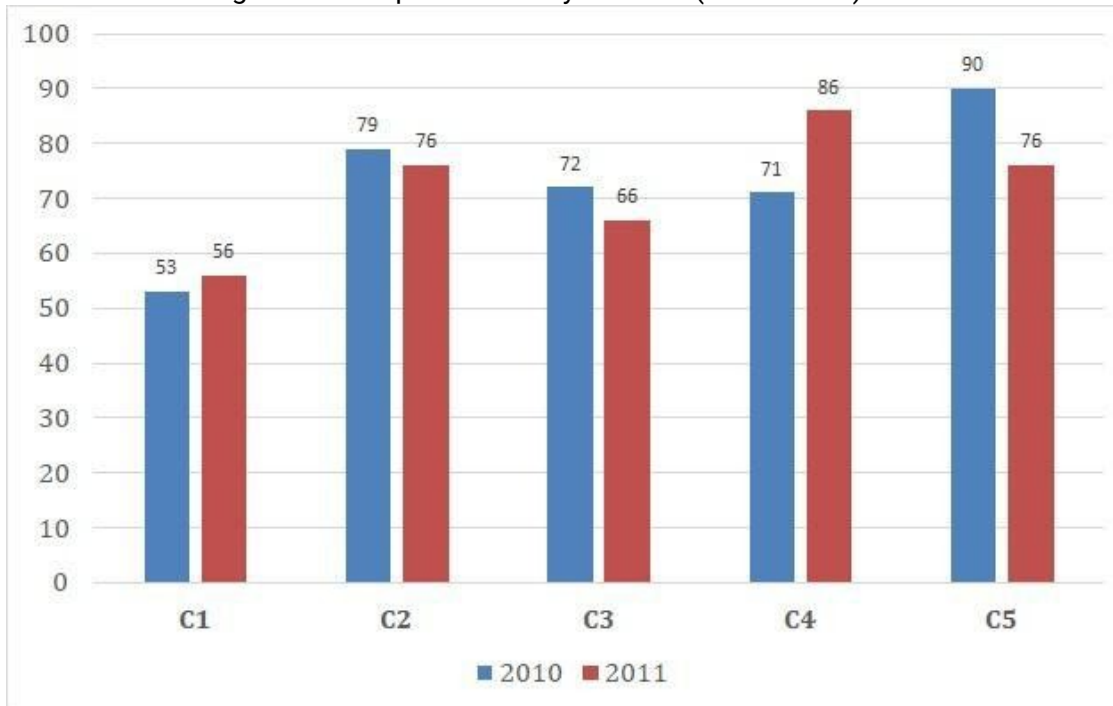
Bookmark

Instructions:

Study the following times graph and answer the question on its basis?

The sales of books (in thousand) of books issued in two consecutive years of 2010 and 2011 of five branches of a publishing company (C1, C2, C3, C4 & C5) have been given.

Find out the average of all companies in the year 2010 (in thousand)?



- (A) 73 - (Alternative 2)
(B) 77 - (Alternative 4)
(C) 71 - (Optional 1)
(D) 75 - (Optional 3)

Question No.107

1.00

Bookmark

Find the value of x.

$$\sqrt{961} \div 29 + \sqrt{1024} = 1 \times x$$

- (A) 34 - (Alternative 2)
(B) 35 - (Optional 3)
(C) 33 - (Optional 1)
(D) 36 - (Optional 4)

Question No.108

1.00

Bookmark

The amount of Rs 8,400 is given at an annual rate of 8% on ordinary interest. If after 5 years the amount was withdrawn and half of the total amount was invested in the stock market. Show the amount remaining (in rupees)

- (A) 5,840 - (Optional 2)
(B) 5,880 - (Alternative 4)
(C) 5,860 - (Optional 3)
(D) 5,820 - (Optional 1)

Question No.109

1.00

Bookmark

The proportion of salaries of Hameed, Clement and Ganesh is 3: 5: 7, respectively, if Ganesh is getting Rs.924 more than Hameed, then what is Clement's salary? (In rupees)

- (A) 1,165 - (Optional 4)
(B) 1,145 - (Optional 2)
(C) 1,155 - (Optional 3)
(D) 1,135 - (Optional 1)

Question no.110

1.00

Bookmark

In the mixture of 112 liters, the ratio of milk and water is 3: 4. If this ratio is changed to 3: 5, then tell the amount of excess water (in liters) mixed in the mixture.

- (A) 19 - (Optional 4)
(B) 16 - (Optional 1)
(C) 18 - (Optional 3)
(D) 17 - (Optional 2)

Question No.111

1.00

Bookmark

A bulb producing company found 13% of the total product defective. If the total number of non-defective products is 5394, then specify the number of total defective products.

- (A) 806 - (Optional 3)
(B) 804 - (Alternative 2)
(C) 802 - (Optional 1)
(D) 810 - (Alternative 4)

Question no.112

1.00

Bookmark

In one box, three different types of old coins are in the ratio of 3: 5: 7, the value of old coins is Rs. 1, 5 and 10 rupees respectively. If the total value of coins in the box is Rs 1078, then tell the number of old coins of 10 rupees.

- (A) 66 - (Optional 1)
(B) 99 - (Optional 4)
(C) 77 - (Optional 2)
(D) 88 - (Optional 3)

Question No.113

1.00

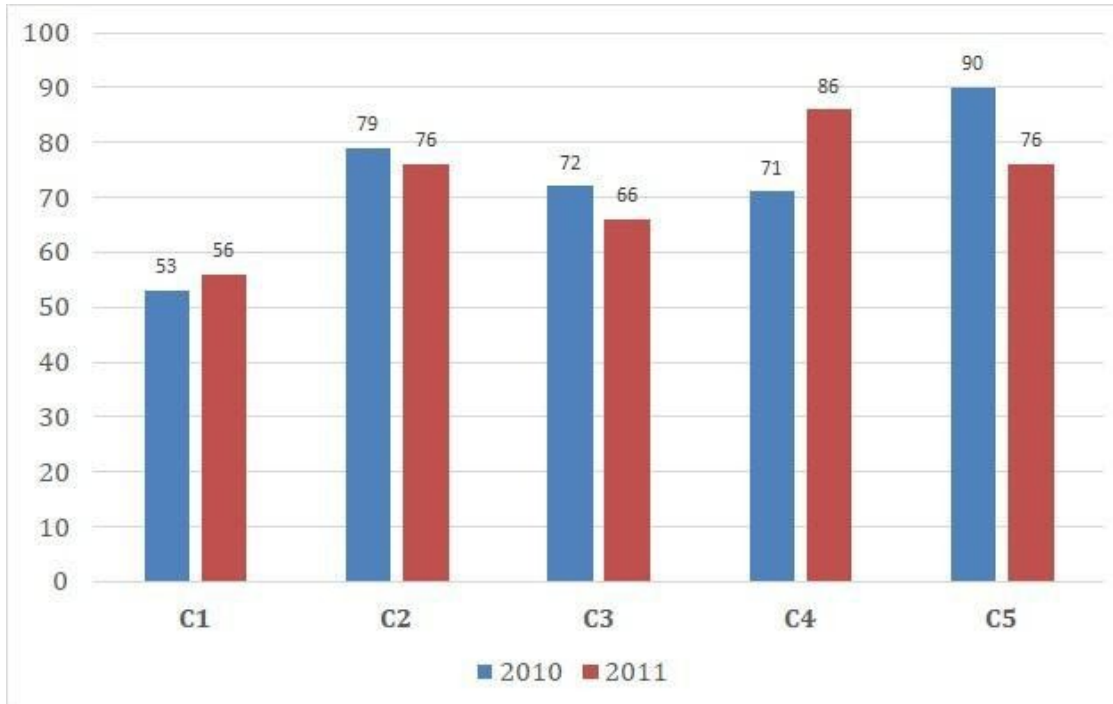
Bookmark

Instructions:

Study the following times graph and answer the question on its basis?

The sales of books (in thousand) of books issued in two consecutive years of 2010 and 2011 of five branches of a publishing company (C1, C2, C3, C4 & C5) have been given.

Find the ratio of total sales in the two years of branch C2 and the ratio of total sales in both years of branch C4?



- (A) 155: 157 - (Optional 4)
- (B) 167: 165 - (Optional 2)
- (C) 165: 167 - (Optional 1)
- (D) 157: 155 - (Optional 3)

Question No.114

1.00

Bookmark

Simplify.

$$35.17 + 21.53 + 37.61 - 42.86 = 3 \times ?$$

- (A) 17.15 - (Optional 3)
- (B) 18.15 - (Optional 4)
- (C) 16.15 - (Optional 2)
- (D) 15.15 - (Optional 1)

Question No.115

1.00

Bookmark

A train takes 61 seconds to cross the 204 m long bridge. If the same train takes 27 seconds to cross the sign board, then tell the length of the train. (In meters)

- (A) 172 - (Alternative 4)
- (B) 142 - (Optional 1)
- (C) 162 - (Optional 3)
- (D) 152 - (Optional 2)

Question no.116

1.00

Bookmark

How can the 756 mobile phones be shared in an evenly similar manner in the students present in the class?

- (A) 28 - (Alternative 4)
- (B) 26 - (Optional 3)
- (C) 22 - (Optional 1)
- (D) 24 - (Optional 2)

Question No.117

1.00

Bookmark

When a number is divided by 119, the remainder remains 6. When the same number is divided by 17, what will be the remainder?

- (A) 5 - (Optional 3)
- (B) 6 - (Optional 4)
- (C) 4 - (Optional 2)
- (D) 3 - (Optional 1)

Question no.118

1.00

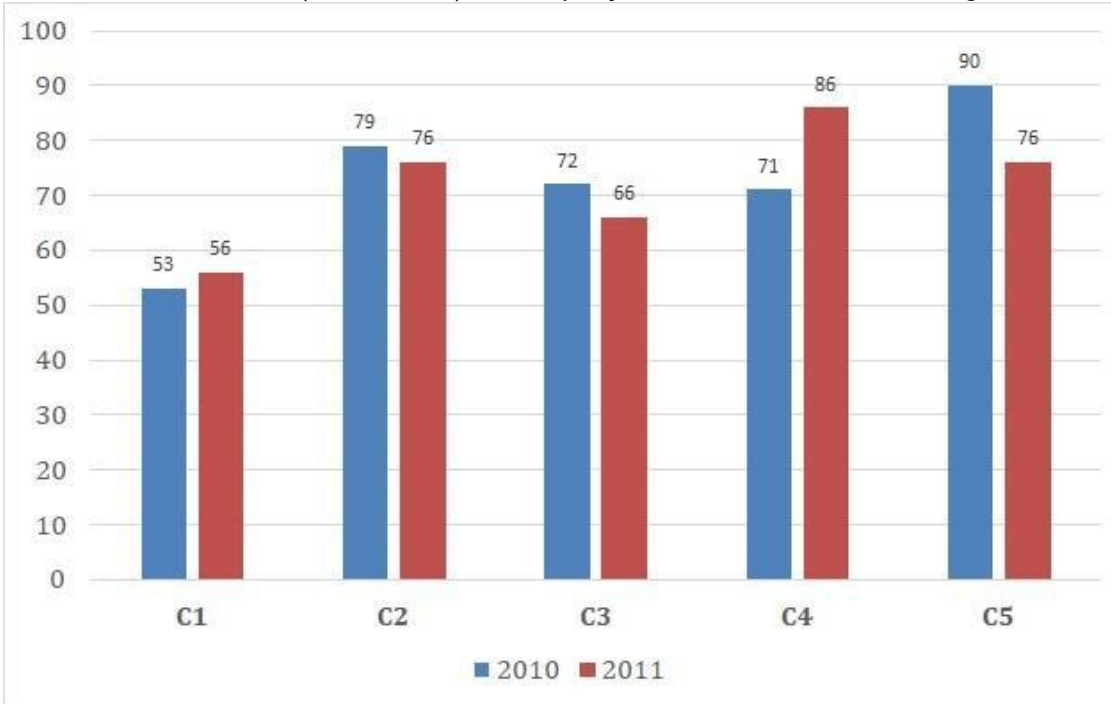
Bookmark

Instructions:

Study the following times graph and answer the question on its basis?

The sales of books (in thousand) of books issued in two consecutive years of 2010 and 2011 of five branches of a publishing company (C1, C2, C3, C4 & C5) have been given.

Find out the total sales (in thousand) of company branches C1, C3 and C5 together in two years?



- (A) 413 - (Optional 3)
(B) 411 - (Optional 1)
(C) 414 - (Optional 4)
(D) 412 - (Alternative 2)

Question No.119

1.00

Bookmark

At the rate of a compound interest rate of 5 years, the original amount is tripled in 5 years, in how many years will this original amount be 729 times?

- (A) 28 - (Optional 1)
(B) 35 - (Optional 4)
(C) 32 - (Optional 3)
(D) 30 - (Alternative 2)

Question No.120

1.00

Bookmark

Simplify.

$$529^2 \times 92 \div 23^5 \times 1021 = ?$$

- (A) 4084 - (Optional 4)
(B) 4064 - (Alternative 2)
(C) 4054 - (Optional 1)
(D) 4074 - (Optional 3)